

Insulation
Middle East



Kingspan Insulation Middle East At A Glance



Fibre-free
Core


Kingspan®

Project Name: The Museum of the Future
Location: Dubai, U.A.E.
Building Use: Leisure – Museum
Product: Kingspan Kooltherm™ Duct and Pipe Insulation
Kingspan PalDuct™ Phenolic System



Contents

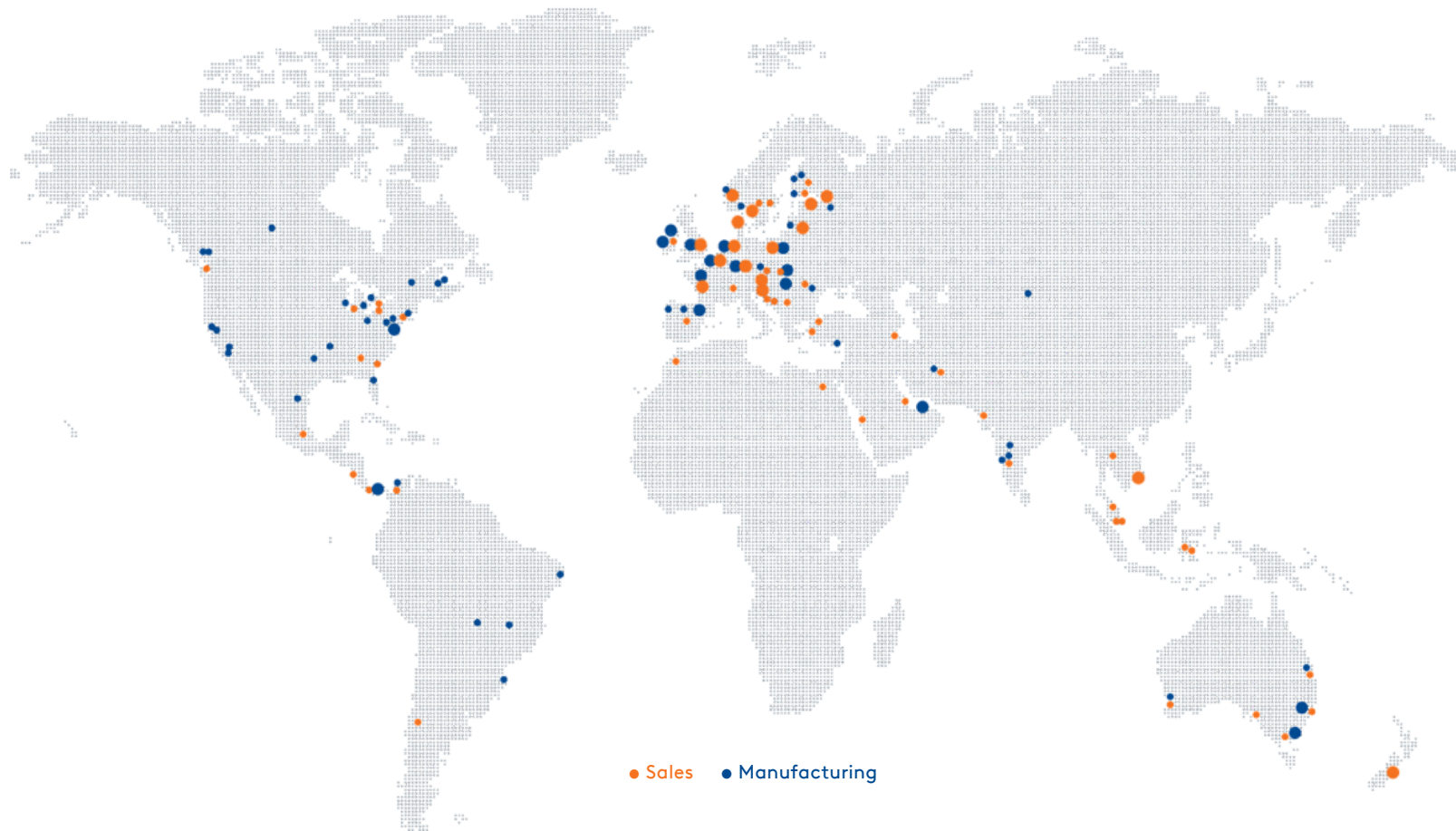
| | |
|--|----------|
| Kingspan Insulation's Global Presence | 4 |
| Welcome to Kingspan Insulation | 6 |
| Insulation Boards Overview | 9 |
| Kooltherm | 10 |
| Therma | 12 |
| Thermataper | 13 |
| Ductwork Overview | |
| PalDuct System Overview | 15 |
| KDuct Pre-Clad System Overview | 17 |



Project Name: The Heart of Europe
Location: Dubai, U.A.E.
Building Mixed Use
Product: Kingspan PalDuct™ PIR System

Kingspan Insulation's Global Presence

Kingspan has 212+ manufacturing sites in over 80+ countries around the world.
Our head offices are located where we were founded in Ireland.



Welcome to Kingspan Insulation Middle East



Welcome to Kingspan Insulation

Kingspan Insulation is a global manufacturer of rigid insulation products and insulated systems for building fabric and building services applications.

Kingspan Insulation, a division of Kingspan Group, is at the forefront of the low energy building drive, helping architects, engineers and developers get the most energy efficient building envelope and building services performance.

Kingspan insulation's global presence means that its unrivaled expertise and knowledge can be transferred and shared quickly into new territories and markets. As international architecture and engineering practices continue to grow with portfolios and clients across borders, Kingspan Insulation's technical and logistical support as well as global product availability becomes increasingly important. Specifiers, architects, engineers and contractors are fully supported by technical expertise, calculations and advice to give complete peace of mind throughout the design and build.

Kingspan Insulation has a vast product range that includes optimum performance next generation insulation; fiber-free performance phenolic insulation; fibre-free polyisocyanurate (PIR) insulation; and fibre-free rigid extruded polystyrene insulation. Kingspan Insulation's products are suitable for both new build and refurbishment in a variety of applications within both residential and commercial buildings.

Insulation for:

- flat roofs;
- tapered roofing systems;
- soffits;

- ductwork in building services applications;

Kingspan Insulation also supplies:

- Kingspan PalDuct System;
- Kingspan KDuct Pre-Clad Duct System;

Kingspan Insulation continues to reinvest in innovation to ensure it is manufacturing the latest technologies that provide architects and engineers with the most efficient building envelope and building services, to improve the thermal comfort and efficiency of buildings.



Welcome to Kingspan Insulation

Kingspan Group

Kingspan Group has over 40 years of experience and is a global provider of building products and solutions for the international property and construction market. Kingspan is committed to producing high efficiency, low cost and low carbon building solutions across a broad range of market sectors. The Group has manufacturing, distribution and commercial operations throughout North America, the Middle East, Europe, Australia, Asia and other locations across the globe.

Product Groups

Insulated Panels

- Insulated Roof & Wall Panels
- Integrated Solar Solutions
- Benchmark Architectural Façade Systems
- Controlled Environments
- Structural Products & Systems
- Steel Building Solutions
- Height Safety Solutions
- Insulated Door Components

Insulation

- Insulation Boards for Roofs, & Soffit
- Ductwork Insulation

Environmental

- Water Management:
Rainwater Harvesting Wastewater and Stormwater Management

- Renewable Technologies
 - Solar Thermal Systems
 - Heat Pumps
 - Wind Energy
 - Hot Water Systems
- Environmental Management
 - Environmental Storage
 - Telemetry and Monitoring
 - Environmental Services

Access Floors

- Access Floor Systems
- Data Center Products
- Underfloor Air
- Underfloor Wire & Cable





Project Name: The Heart of Europe
Location: Dubai, U.A.E.
Building Mixed Use
Product: Kingspan PalDuct™ PIR System

Insulation Boards Overview

Introduction

Kingspan Insulation offers one of the widest ranges of building fabric insulation products available in the Middle East market.

This extensive range of roof, wall and floor insulation products comprises:

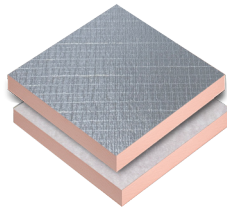
- Kingspan Kooltherm™ insulation;
- Kingspan Therma™ insulation;

Kooltherm™

Rigid thermoset insulation.

Therma™

Rigid thermoset insulation.



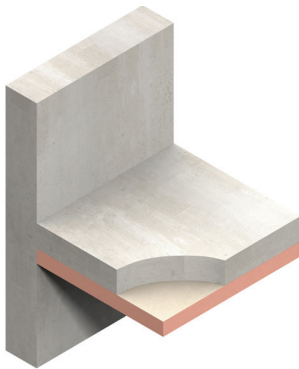
Kooltherm™

Introduction

The Kingspan Kooltherm™ Range is an extensive range of phenolic insulation products for soffit and floors.

Benefits

- It easily achieves required U-values with minimum board thickness.
- It is safe and easy to install – it does not produce irritative fibres.
- It provides reliable long term thermal performance over the lifetime of a building.
- Manufactured with a blowing agent that has zero ODP (contains no CFC and HCFC) and low GWP



Kingspan Kooltherm™ K10
Soffit Board

Fibre-free
Core





Project Name: Deira Enrichment Project [DEP], Deira District

Location: Dubai, U.A.E.

Building Use: Mixed

Product: Kingspan Kooltherm™ K10 Soffit Board

Therma™

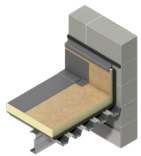
Introduction

The Kingspan Therma™ Range is an extensive range of polyisocyanurate insulation products for roofs, floors.

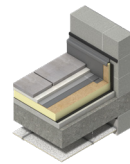
Benefits

- It is safe and easy to install – it does not produce irritative fibres.
- Manufactured with a blowing agent that has zero ODP (contains no CFC and HCFC) and GWP ≤ 5
- FM approved solutions available. Not all thicknesses and sizes are covered by the FM Approval.
- Further details of the FM Approval listing for Therma™ TR27 are published on the FM Approvals Approval Guide website at: www.roofnav.com. To view the listing, search Keyword(s): Therma TR27.

Fibre-free
Core



Kingspan Therma™ TR27 on a metal deck



Kingspan Therma™ TR27 on a concrete deck



Project Name: Louvre Abu Dhabi
Location: Abu Dhabi, United Arab Emirates
Building Use: Museum
Product: Kingspan Therma™ TR27 & GreenGuard™ GG300



Project Name: UAE Pavilion
Location: Dubai, United Arab Emirates
Product: Kingspan Therma™ TR27
Image copyright Expo 2020

Thermataper™ Range

Introduction

Kingspan Thermataper™ Systems comprise tapered insulation boards, flat packer boards, pre-mitred hip and valley boards and a tapered roofing design service. Kingspan Thermataper™ products are designed: for use under most waterproofing membranes; to provide required roof falls; and to provide insulation to meet the requirements of Building Regulations / Standards.

Benefits

Simpler

On new roofs, the use of one of Kingspan's tapered roofing systems eliminates the need to incorporate a fall into the design of a roof deck. On existing roofs, one of Kingspan's tapered roofing systems and new waterproofing membrane can be laid on top of the original waterproofing. This eliminates the need for stripping down the roof to deck level, and the provision of a vapour control layer may not be required.

NB The existing insulation / substrate and waterproofing must be sound, in order to provide a satisfactory surface for Kingspan's tapered roofing system, and the risk of interstitial condensation must be fully assessed



Less Waste

A number of Kingspan's tapered roofing systems are available single picked, pre-mitred and pre-bonded to reduce on site waste.

Single picked

Boards are typically delivered in exact quantities (as opposed to pack quantities) significantly reducing on site wastage from excess boards.

Pre-mitred

Pre-mitred boards reduce waste from the installation process. Insulation boards are cut in half by Kingspan Insulation in its factory to make mitred hip and valley boards. For some tapered systems, these are "single picked" to match the tapered system design so as to reduce waste from cutting hips and valleys on site. Both (hip and valley) halves of the cut board are used and the only waste is the dust generated by sawing. Whereas, when boards are cut on site, up to 50% of the cut boards could be wasted, depending on the particulars of the specific board layout and falls design.

Pre-bonded

Pre-bonded boards remove the need for on site adhesives, proving a more effective adhesive bond whilst reducing wastage, costs and installation time. Factory made hips and valleys are adhesively bonded to the required packer boards by Kingspan Insulation in its factory.

Site survey (pre-installation)

Once a scheme has been designed and ordered a preinstallation site survey is available to ensure that the roof deck dimensions are still as originally designed. This enables the scheme to be adapted to fit any changes that may have occurred during the build process. The resulting installation time is quicker as on-site changes will not have to be made, nor will extra boards have to be ordered.

For more recent information please visit: <https://www.kingspan.com/gb/en/products/insulation-boards/roof-insulation-boards/thermataper-tt47/>



Project Name: My City Centre, Masdar

Location: Abu Dhabi, U.A.E

Building Use: Mixed

Product: Kingspan GreenGuard™ GG500 Insulation board and Kingspan Therma™ TR26

PalDuct System Overview

Introduction

Kingspan PalDuct Systems offer a range of pre-insulated HVAC ductwork for a variety of applications. Kingspan PalDuct Systems comprise Kingspan PalDuct phenolic panels, Kingspan PalDuct polyisocyanurate (PIR) panels.

The following Kingspan PalDuct systems are available:

- PalDuct PIR System;
- PalDuct Phenolic System.

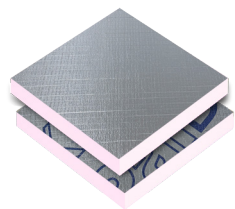
Benefits

All products in the Kingspan PalDuct range offer many advantages commonly associated with pre-insulated ductwork compared to traditional ductwork, such as:

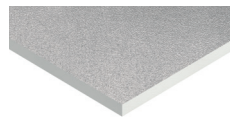
- fast track installation;
- lightweight;
- space saving; and
- energy saving.

Additional Benefits

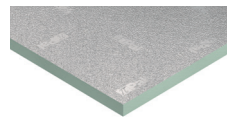
- The Kingspan PalDuct Phenolic System is UL Listed as a Class 1 Air Duct, to Standard for Safety UL 181, when fabricated to a specification clearly defined by UL.
- All Kingspan PalDuct panels, used in the fabrication of Kingspan PalDuct Systems, comprise a fibre-free rigid insulation core.



Kingspan PalDuct
Phenolic panel



Kingspan
PalDuct PIR panel



Kingspan
PalDuct PIR panel

Project Name: AKOYA
Location: Dubai, U.A.E.
Building Use: Residential
Product: Kingspan PalDuct™ Phenolic System

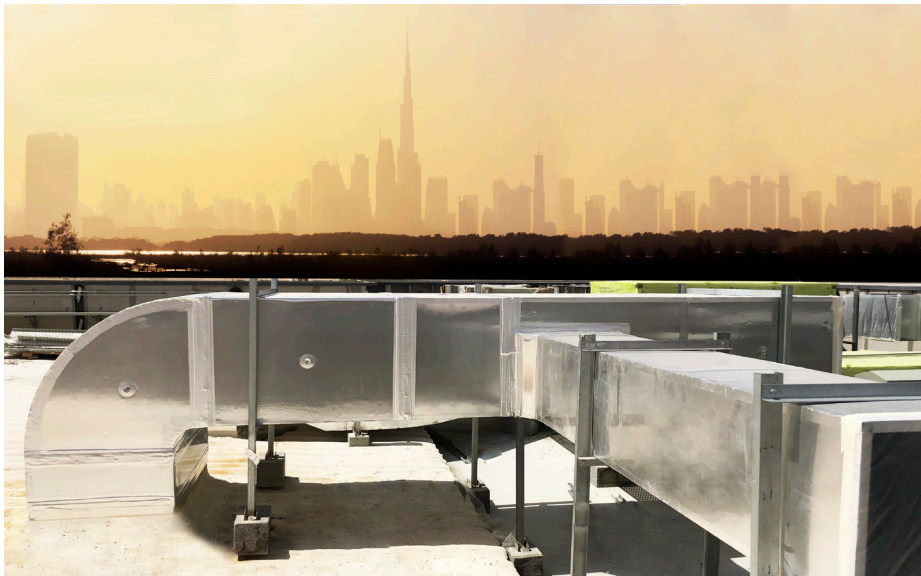


KDuct Pre-Clad Duct System Overview

Introduction

KDuct is Kingspan's innovative and revolutionary pre-insulated ductwork system made of thermoset fibre-free pre-insulated duct board with a heavy-duty outer jacket, ideal for:

- External/Outdoor applications
- Plantrooms
- Risers
- Congested spaces
- Lightweight specifications



Kingspan KDuct Pre-Clad Duct Systems

Benefits

Kingspan KDuct offer many advantages commonly associated with pre-insulated ductwork, such as:

- Ultra-strength and rigidity
- Cost-savings over traditional exterior ductwork
- Easy to clean
- Fibre-free insulation core.
- Easy to transport and install
- Fast-track single-fix installation.
- High-compressive stress of 200kpa at 10% compression
- Manufactured with a blowing agent that has zero ODP contains no CFC and HCFC and GWP ≤ 5 .



Fibre-free
Core

Contact Details

Middle East

Kingspan Insulation LLC
PO Box 113826 | Dubai Investment Park 2 Dubai | UAE

T: +971 (0) 4 889 1000
F: +971 (0) 4 883 8515
E: info@kingspaninsulation.ae
www.kingspan.com/ae/en

Technical Service

Kingspan Insulation has one of the most technically advanced support services in the industry offering a full spectrum of advice, free of charge for all types of design projects.

The Kingspan Insulation technical team are continually updating their knowledge on building regulations, best practise, construction methods and the development of building materials to ensure the advice and services provided are always one step ahead.

Services available:

- U-value calculations;
- condensation/dew point risk calculations;
- advice on product selection and product data for the full range of Kingspan Insulation products;
- installation and fixing advice on all applications and products;
- specification and construction advice; and
- Tapered Roofing Design service.

Email: technical@kingspaninsulation.ae

Kingspan Insulation LLC reserves the right to amend product specifications without prior notice. Product thicknesses shown in this document should not be taken as being available ex-stock and advice should be sought directly from Kingspan Insulation LLC. The information, technical details and fixing instructions etc. included in this literature are given in good faith and apply to uses described herein. Recommendations for use should be verified as to the suitability and compliance with actual requirements, specifications and any applicable codes, laws and regulations. For other applications or conditions of use, Kingspan Insulation offers a Technical Advisory Service, the advice of which should be sought for uses of Kingspan Insulation products that are not specifically described herein or specifically required for your region.

To ensure you are viewing the most recent and accurate product information, please visit this link <https://www.kingspan.com/ae/en/business-groups/kingspan-insulation/>

© Kingspan and the Lion Device are Registered Trademarks of the Kingspan Group plc. All rights reserved.

Kooltherm, Optim-R, Therma, Thermataper, GreenGuard and PalDuct are Trademarks of the Kingspan Group plc.

No rights can be derived from this document. Changes, typesetting and printing errors reserved. This version replaces all previous versions.

