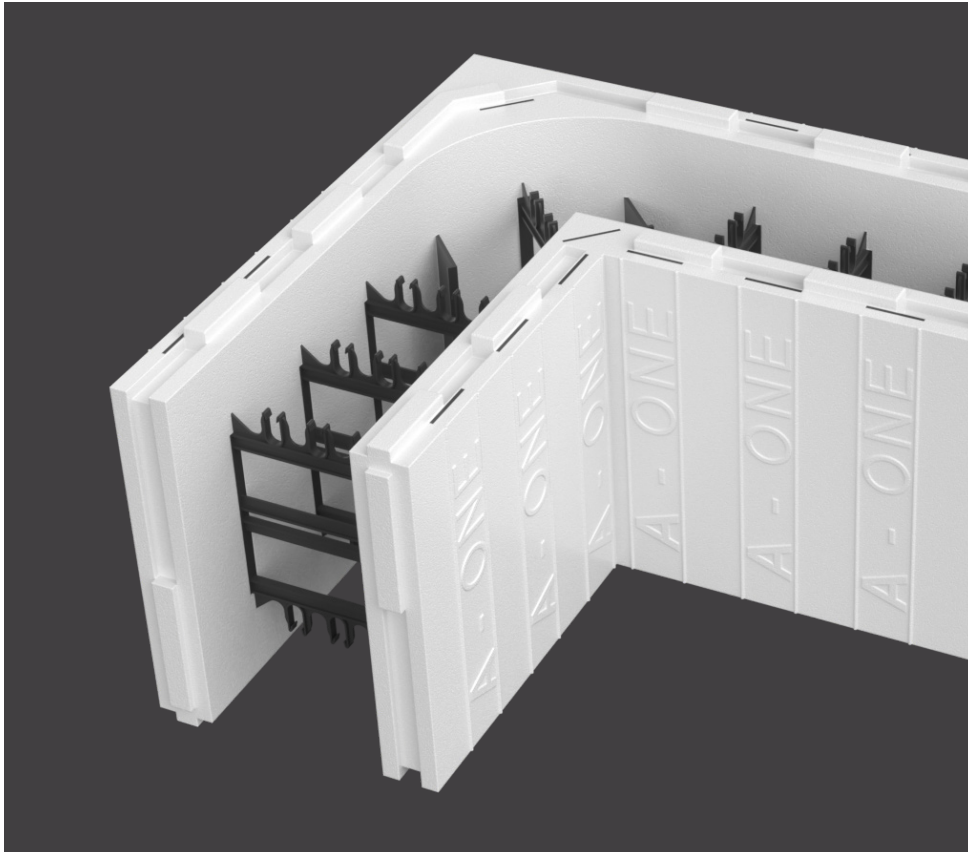


Insulation
US

Aeroslab™

A-ONE™ System

Insulated Concrete Forms



- EPS ICFs with multiple contractor focused features
- Lightweight and easy to assemble
- Reversible corner pieces



AEROSLAB™

A-ONE™ System

Description

A-ONE™ is an easy to use insulated concrete forming (ICF) system that provides a building system with insulation and thermal mass built right in. Insulated concrete wall systems meet the code requirements for high winds when properly constructed. Continuous insulation on the wall contributes to lower energy costs. The insulated walls can be finished in any style from modern to traditional with today's building materials.

Features

- Polypropylene brackets are 2.5" wide and full height of the block to provide a continuous top to bottom fastening capability every 8" on center.
- Reversible interlock makes for correct alignment and insulation seal.
- Heavy-duty outside corner bracket increases fastening area and is anchored into the concrete for fast and easy installation of exterior sidings.
- Vertical & horizontal wire clips anchor the forms together, keeping assembly quick and easy.
- A-ONE insulated walls provide high continuous R-value which can reduce heating and cooling costs.

Compliance

Intertek CCRR-0425;
ICC - ESR-1815

Energy Cost Savings:

Insulation performance of a home built with A-ONE insulated concrete forms system can be significantly higher than a typical wood framed and fiberglass insulated home due to the extent of continuous insulation minimizing thermal bridging and thermal mass versus wood stud and only batt insulation.

Performance:

Insulated concrete walls offer increased protection from high winds and storm debris when properly installed. ICF walls are naturally resistant to molds and insect infestations. Due to the continuous nature of the concrete, ICF walls can reduce air leakage and drafts.

Rebates or Subsidies:

Contact your local utility company regarding rebates or subsidies for constructing with energy efficient walls.

General Specifications¹

Interlock Design	Reversible
Interior Wall Design	Flatwall
Block Height	16"
EPS Wall Thickness	2.5"
EPS Density (Nominal)	1.5 pcf
Wall Area (Straight Block)	5.33 sq-ft
Concrete Capacity	
	1 cu-yd fills 14.3 blocks of 4" form
	1 cu-yd fills 10.0 blocks of 6" form
	1 cu-yd fills 7.6 blocks of 8" form
	1 cu-yd fills 6.1 blocks of 10" form
	1 cu-yd fills 5.0 blocks of 12" form
Fastening Bracket	8" on-center plastic wall studs, 2.5" wide x 16" high
Insulation Value	EPS Insulation: R-value = R-20
Fire Rating	4 hours (ASTM E119-00a)

¹ These are nominal values obtained from representative product samples, and are subject to normal manufacturing variances.

Installation

Please see the Kingspan A-ONE Installation Guidebook for detailed installation instructions.

AEROSLAB™

A-ONE™ System

Standard Products^{1,2}

All straight blocks are 48" long and 16" high, except Half Block Form which is only 8" high



Straight Form
4", 6", 8", 10", 12"

Blocks are 48" x 16"



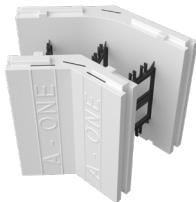
Taper Top Form
6", 8", 10", 12"



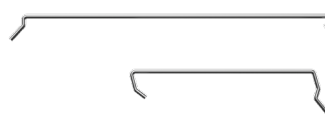
90° Corner Form³
4", 6", 8", 10", 12"
All Corners are 16" high
Corner form dimensions vary. See A-ONE installation manual for dimensions



Half Block Form
6", 8", 10", 12"



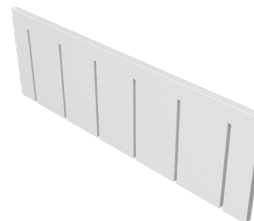
45° Corner Form
4", 6", 8"



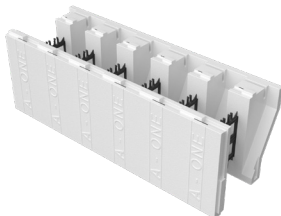
V Wire Clip
H Wire Clip



T Form³
6", 8"
T Form length and width dimensions vary according to block thickness.

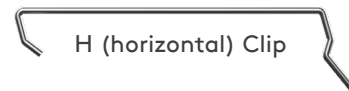


Insulated Insert Panels



Brick Ledge Form
6" 8"

¹ All forms are 16" high except "Half Block Form" which is 8" high
² All forms are available in 48" lengths except 90° Corner Forms and T Forms
³ 90° Corner Form and T Form dimensions vary



H (horizontal) Clip



**Heavy-Duty
Corner Bracket**

V (vertical) Clip

**2.5" Wide Full Height
Internal Tie**



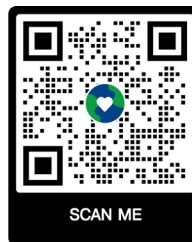
AEROSLAB®

A-ONE™ System



For more information on specific building product recommendations and installation guidelines, contact your Kingspan Insulation LLC representative.

Kingspan Insulation LLC believes the information and recommendations herein to be accurate and reliable. However, since use conditions are not within its control, Kingspan Insulation LLC does not guarantee results from use of such products or other information herein and disclaims all liability from any resulting damage or loss. No warranty, express or implied, is given as to the merchantability, fitness for particular purpose, or otherwise with respect to the products referred to.



Please scan the QR code for the most recent product information.

Kingspan Insulation LLC
2100 Riveredge Parkway | Suite 175
Atlanta | Georgia 30328

T: +1 (800) 241 4402 F: +1 (678) 589 7325

E: info@kingspaninsulation.us

www.kingspaninsulation.us

© Kingspan and the Lion Device are Registered Trademarks of the Kingspan Group plc in the US, Canada and other countries. All rights reserved.

kingspan-aeroslab-a-one-product-data-sheet-en-us-v2

Version 2 - 08/2025

