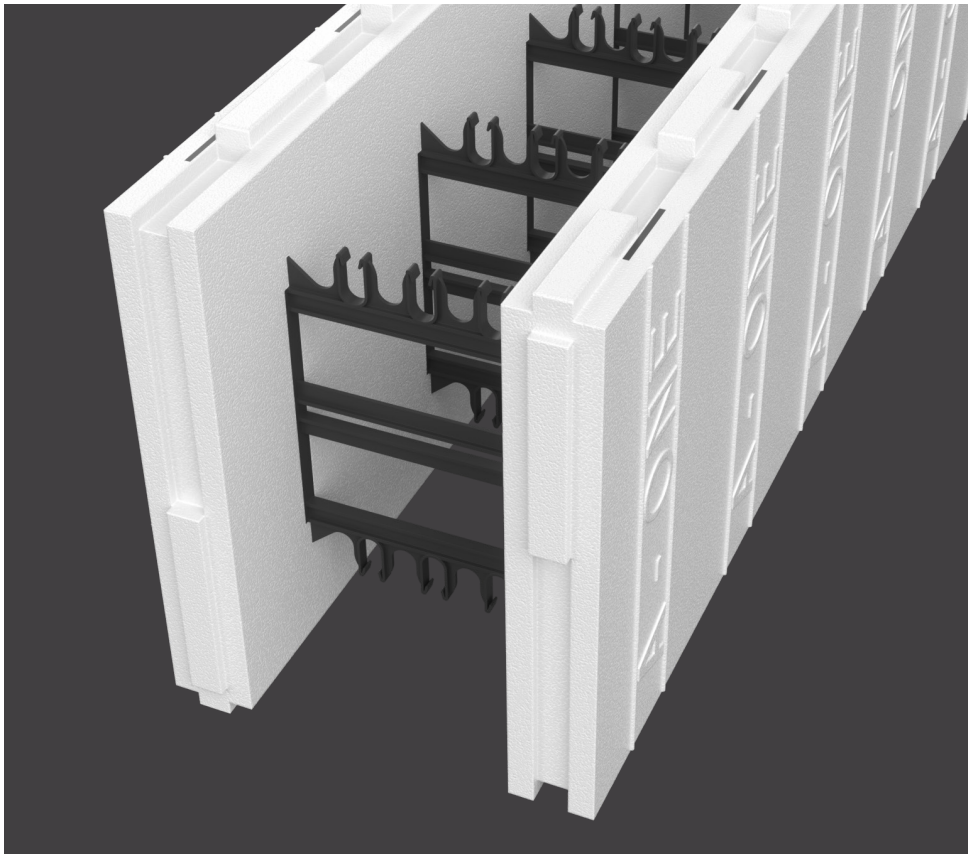


Insulation
US

Aeroslab™

A-ONE™ System

Insulated Concrete Forms



- Enhanced energy efficiency achieved through a combination of 2.5-inch built-in foam walls and concrete thermal mass
- Concrete resistant to fire, wind, rot, and pest damage (See ESR #1815)



Description

A-ONE™ is an easy to use insulated concrete forming (ICF) system that provides a building system with insulation and thermal mass built right in. Insulated concrete wall systems meet the code requirements for high winds when properly constructed. Continuous insulation on the wall contributes to lower energy costs. The insulated walls can be finished in any style from modern to traditional with today's building materials.

Features

- Polypropylene brackets are 2.5" wide and full height of the block to provide a continuous top to bottom fastening capability every 8" on center for hanging exterior claddings or interior drywall.
- Reversible interlock makes for correct alignment and insulation seal.
- Heavy-duty outside corner bracket increases fastening area and is anchored into the concrete for fast and easy installation of exterior sidings.
- A-ONE insulated walls include continuous insulation on both the exterior and interior sides of the wall system plus thermal concrete mass for even greater R-value.

Installation Process

- Footings are poured, bottom row of A-ONE forms are set on the footings.
- Factory corners are stacked and braced.
- A-ONE forms are stacked to the desired height and installed with appropriate reinforcing steel (rebar).
- Window and door framing is set and braced, and intermediate bracing is set as the wall is built.
- Concrete is poured in the wall and finished at the top.
- After the concrete sets, the corner and intermediate braces are removed.
- The insulated wall is now ready for interior and exterior finish.

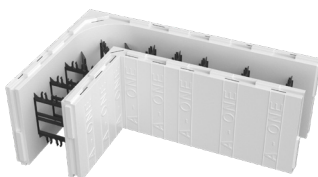
Standard Products

All straight blocks are 48" long and 16" high, except Half Block Form which is only 8" high



Straight Form
4", 6", 8", 10", 12"

Blocks are 48" x 16"

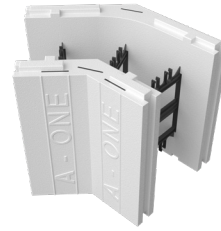


90° Corner Form
4", 6", 8", 10", 12"

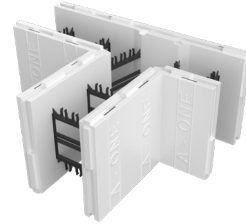
All Corners are 16" high
Corner form dimensions vary. See A-ONE installation manual for dimensions

Standard Products

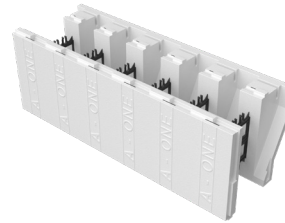
All straight blocks are 48" long and 16" high, except Half Block Form which is only 8" high



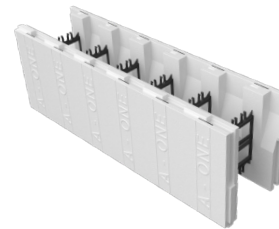
45° Corner Form
4", 6", 8"



T Form
6", 8"
T Form length and width dimensions vary according to block thickness.



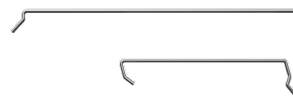
Brick Ledge Form
6" 8"



Taper Top Form
6", 8", 10", 12"

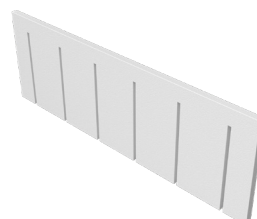


Half Block Form
6", 8", 10", 12"

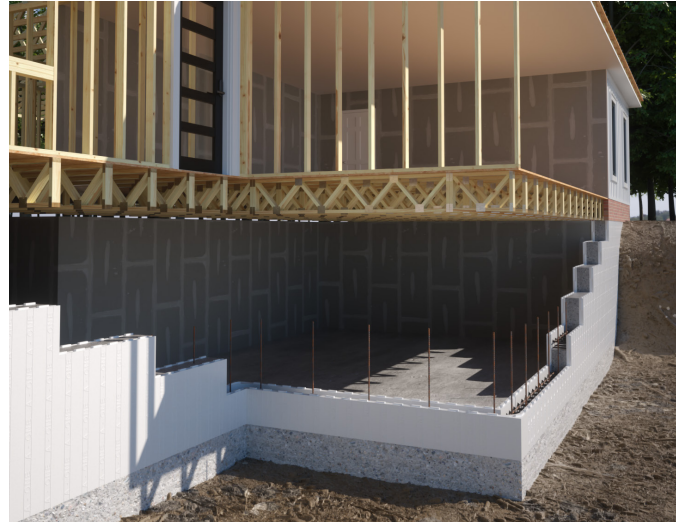
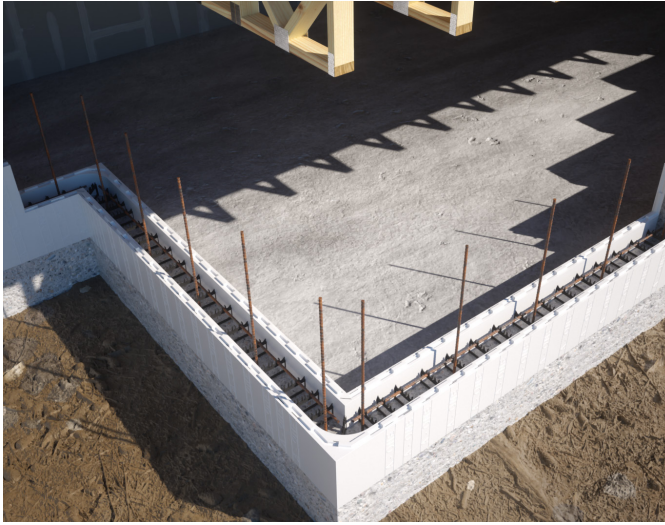


V Wire Clip

H Wire Clip



Insulated Insert Panels



A-ONE insulated concrete walls help provide a quiet, comfortable living space. Interior and exterior surfaces can be finished with typical construction materials.

Energy Cost Savings:

Insulation performance of a home built with A-ONE insulated concrete forms system can be significantly higher than a typical wood framed and fiberglass insulated home due to the extent of continuous insulation minimizing thermal bridging and thermal mass versus wood stud and only batt insulation.

Performance:

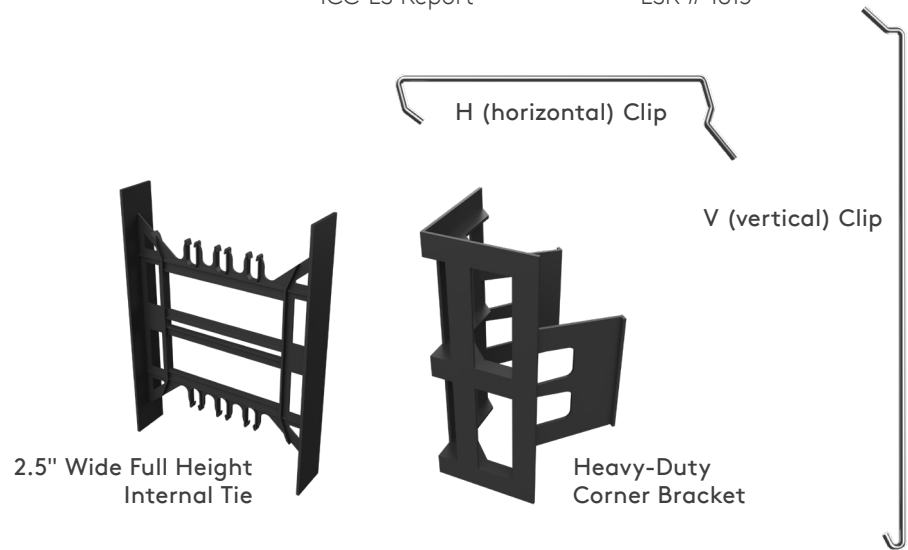
Insulated concrete walls offer increased protection from high winds and storm debris when properly installed. ICF walls are naturally resistant to molds and insect infestations. Due to the continuous nature of the concrete, ICF walls can reduce air leakage and drafts.

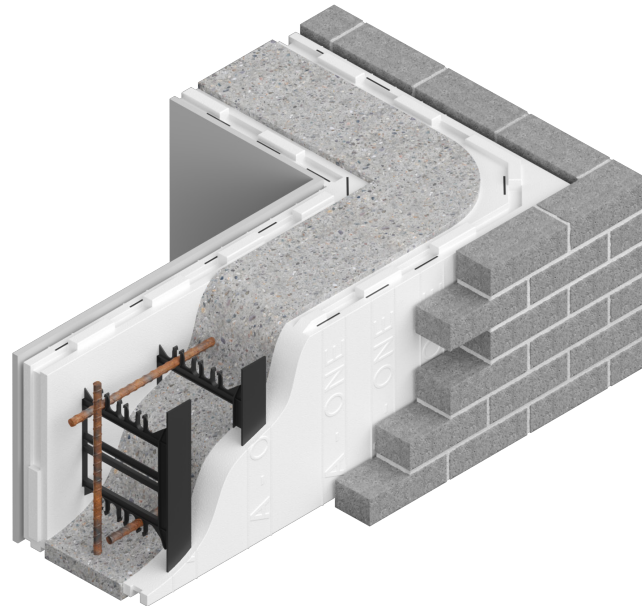
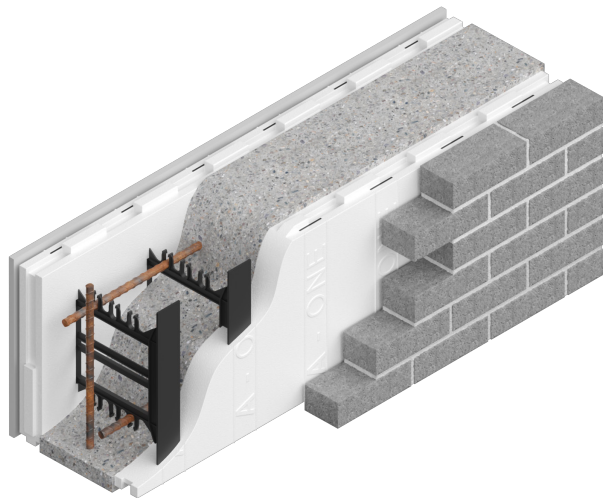
Rebates or Subsidies:

Contact your local utility company regarding rebates or subsidies for energy efficient walls.

General Specifications

Interlock Design	Reversible
Interior Wall Design	Flatwall
Block Height	16"
EPS Wall Thickness	2.5"
EPS Density (Nominal)	1.5 pcf
Wall Area/Straight Block	5.33 square feet
Concrete Capacity	1 cy fills 14.3 blocks of 4" form 1 cy fills 10 blocks of 6" form 1 cy fills 7.6 blocks of 8" form 1 cy fills 6.1 blocks of 10" form 1 cy fills 5 blocks of 12" form
Fastening Bracket	8" on center plastic wall studs, 2.5" wide by 16" high
Insulation Value	Total value for EPS insulation, R-20. Additional insulation performance achieved with concrete mass and reduced air leakage.
Fire Rating	ASTME 119-00a 4-Hours
ICC-ES Report	ESR # 1815





Additional Benefits

A-ONE is designed to provide benefits for contractors and property owners alike. It can be used above grade as well below, and is perfect for residential, commercial or industrial construction.

- The standard design can be designed to meet the ICC standard for residential construction in high wind regions.
- Finishing materials used inside and out can be identical to that used with wood frame and masonry construction.
- ICF walls can provide superior soundproofing compared to traditional wood frame construction.

For more information on specific building product recommendations and installation guidelines, contact your Kingspan Insulation LLC representative.

Kingspan Insulation LLC believes the information and recommendations herein to be accurate and reliable. However, since use conditions are not within its control, Kingspan Insulation LLC does not guarantee results from use of such products or other information herein and disclaims all liability from any resulting damage or loss. No warranty, express or implied, is given as to the merchantability, fitness for particular purpose, or otherwise with respect to the products referred to.



Please scan the QR code for the most recent product information.

Kingspan Insulation LLC
 2100 Riveredge Parkway | Suite 175
 Atlanta | Georgia 30328

T: +1 (800) 241 4402 F: +1 (678) 589 7325

E: info@kingspaninsulation.us

www.kingspaninsulation.us

© Kingspan and the Lion Device are Registered Trademarks of the Kingspan Group plc in the US, Canada and other countries. All rights reserved.

kingspan-aeroslab-a-one-systems-brochure-en-us-v2

Version 2 - 08/2025

