

Insulation
Ireland

Eleventh Issue | 03/2026

Kooltherm® K8 Plus Cavity Board

Partial fill cavity wall insulation

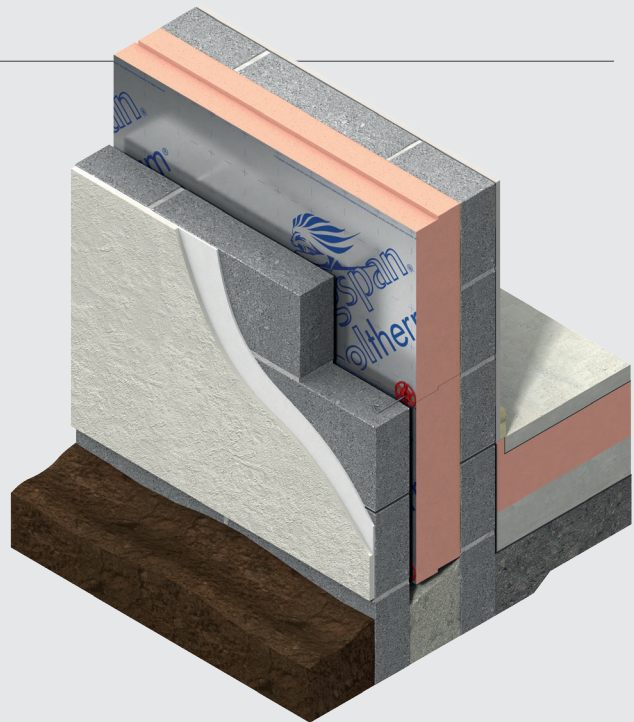


Contents

Introduction	3
Product details	4
The facings	4
The core	4
Standards & approvals	4
Standard dimensions	4
Compressive strength	4
Durability	4
Resistance to solvents, fungi & rodents	4
Fire performance	4
Thermal properties	4
Typical constructions & U-values	5
Assumptions	5
Internal finish - 13 mm lightweight plaster finish	6
Internal finish - Kingspan Kooltherm® K18 Insulated Plasterboard	6
Internal finish - 13 mm lightweight plaster	7
Internal finish - Kingspan Kooltherm® K18	7
Heat loss and linear thermal bridging	8
Design considerations	9
Responsible sourcing	9
Specification clause	9
Design standards	9
Residual cavity width	9
Wall ties	9
Lightning protection	9
Sitework	10
Fixing details	10
Excess mortar	11
General	12
About Kingspan Insulation	13
Products & solutions	13
Company details	17
Services	17
Planet Passionate	18

Introduction

- Premium performance rigid thermoset phenolic insulation - thermal conductivities as low as 0.021 W/mK
- 20 mm clear cavity is maintained - resists moisture penetration
- Engineered jointing to resist water ingress
- Achieves European Classification (Euroclass) C-s2,d0
- U-values as low as 0.14 W/m²K achieved in standard 150 mm cavity
- Low emissivity scrim reinforced foil facings increase the thermal resistance of the cavity
- Unaffected by air infiltration
- Easy to handle and install compared to some other traditional insulants



Visit our **free online U-value calculator**.
Offering free, quick and easy calculations
for wall, floor and roof constructions.

Useful links

Website

[Kingspan Kooltherm® K8 PLUS webpage](#)

Psi-values and standard details

[Kingspan Kooltherm® K8 Plus indicative psi-values](#)

Certificates

[Kingspan Kooltherm® K8 PLUS BDA Certificate \(thicknesses of 90 - 130 mm\)](#)

[Kingspan Kooltherm® K8 PLUS BES 6001 Certificate](#)

BIM objects

[Kingspan Kooltherm® K8 PLUS BIM objects](#)

Declaration of Performance (DoP)

[Kingspan Kooltherm® K8 PLUS Declaration of Performance](#)

Safety information

[Kingspan Kooltherm® product safety information](#)

Product details

The facings

Kingspan Kooltherm® K8 Plus is faced with a low emissivity scrim reinforced composite foil facing on both sides, autohesively bonded to the insulation core during manufacture. This reflective, low emissivity surface improves the thermal resistance of any unventilated cavity adjacent to the board.

The core

The core of Kingspan Kooltherm® K8 Plus is a premium performance fibre-free rigid thermoset phenolic insulant.

Standards & approvals

Kingspan Kooltherm® K8 Plus is manufactured under a management system certified to ISO 9001: 2015 (Quality management systems), ISO 14001: 2015 (Environmental management systems), ISO 37301: 2021 (Compliance management systems), ISO 45001: 2018 (Occupational health and safety management systems) and ISO 50001: 2018 (Energy management systems).

The use of Kingspan Kooltherm® K8 Plus is covered by BDA Agrément Certificate BAE 20-141-P-A-UK (in thicknesses of 90 - 130 mm).

Standard dimensions

Kingspan Kooltherm® K8 Plus is available in the following standard size(s):

Nominal dimension	Availability
Length (m)	1.2
Width (m)	0.45
Insulant thickness (mm)	90, 100, 120, 130 & 140 mm

NB Other thicknesses may be available subject to order quantity.

Compressive strength

The declared compressive strength of Kingspan Kooltherm® K8 Plus is 100 kPa when tested to EN 826: 2013 (Thermal insulating products for building applications. Determination of compression behaviour).

Durability

If correctly installed, Kingspan Kooltherm® K8 Plus can have an indefinite life. Its durability depends on the supporting structure and the conditions of its use.

Resistance to solvents, fungi & rodents

The insulation core is resistant to short-term contact with petrol and with most dilute acids, alkalis and mineral oils. However, it is recommended that any spills be cleaned off fully before the boards are installed. Ensure that safe methods of cleaning are used, as recommended by suppliers of the spilt liquid. The insulation core is not resistant to some solvent-based adhesive systems, particularly those containing methyl ethyl ketone. Adhesives containing such solvents should not be used in association with this product. Damaged boards or boards that have been in contact with harsh solvents or acids should not be used.

The insulation core and facings used in the manufacture of Kingspan Kooltherm® K8 Plus resist attack by mould and microbial growth and do not provide any food value to vermin.

Fire performance

Kingspan Kooltherm® K8 Plus achieves European Classification (Euroclass) C-s2,d0, when classified to EN 13501-1: 2018 (Fire classification of construction products and building elements - Classification using data from reaction to fire tests). Please see the table below for further test information, conditions and field of application.

Test report number	EUI-23-SBI-000890-Revision 2 and EUI-23-SFB-000890-Revision 2
Classification report number	EUI-23-000890-Revision 2
Product thickness (mm)	25 - 150 mm
Substrate	Valid for any substrate, except plasterboards, of at least A2-s1,d0 class and at least 652 kg/m ³ density
Joints / edges	Vertical and horizontal joints and any edge type

Kingspan Kooltherm K8 Plus is assessed under Assessment and Verification of Constancy of Performance (AVCP) System 1 for Reaction to Fire.

Certificate of Constancy of Performance	1812-CPR-2218
---	---------------

Further details of the fire performance of Kingspan Insulation products may be obtained from the Kingspan Insulation Technical Service Department (see rear cover).

Thermal properties

The λ -values and R-values detailed below are quoted in accordance with I.S. EN 13166: 2012 + A2: 2016 (Thermal insulation products for buildings - Factory made phenolic foam (PF) products - Specification).

Thermal conductivity

The boards achieve a thermal conductivity (-value) of 0.021 W/mK (insulant thickness 45 - 150 mm).

Thermal resistance

Thermal resistance (R-value) varies with thickness and is calculated by dividing the thickness of the board (expressed in metres) by its thermal conductivity. The resulting number is rounded down to the nearest 0.05 (m²K/W).

Insulant thickness (mm)	Thermal resistance (m ² K/W)
90	4.25
100	4.75
120	5.70
130	6.15
140	6.65

NB Refer to local distributor for current stock and non-stock sizes.

Typical constructions & U-values

Assumptions

The U-values in the tables that follow have been calculated using the method detailed in ISO 6946: 2017 (Building components and building elements - Thermal resistance and thermal transmittance - Calculation methods). They are valid for the constructions shown in the details immediately above each table.

Unless stated otherwise the internal wall finish is taken to be a 13 mm lightweight plaster.

These U-values are valid for constructions with a 20 mm minimum clear residual cavity between the outer surface of the insulation and the inner face of the outer masonry leaf.

NB When calculating U-values to ISO 6946: 2017, the type of wall tie used may change the thickness of insulation required. For cavity widths ≤ 150 mm, calculations assume a stainless steel flexible tie with 4.9 ties per m^2 and a cross-sectional area of 8.55 mm^2 .

NB For the purposes of these calculations the standard of workmanship has been assumed good, and therefore the correction factor for air gaps has been ignored.

NB The figures quoted are for guidance only. A detailed U-value calculation and a condensation risk analysis should be completed for each project.

NB If your construction is different from those specified, and / or to gain a comprehensive U-value calculation along with a condensation risk analysis of your project, please consult the Kingspan Insulation Technical Service Department (see rear cover) for assistance.

Typical constructions & U-values

Internal finish - 13 mm lightweight plaster finish

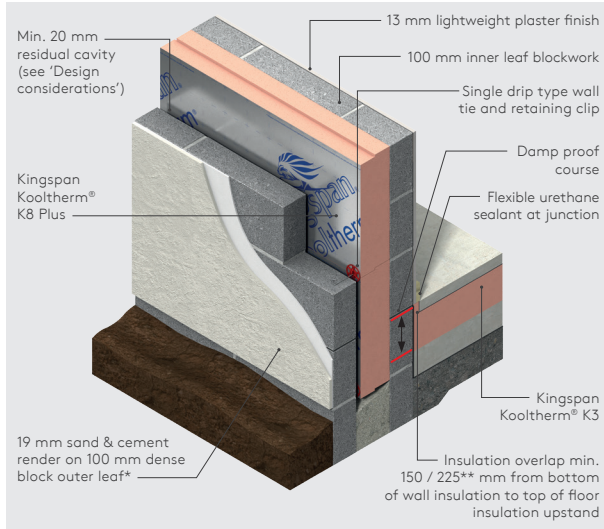


Figure 1

U-values (W/m ² K) for various thicknesses of Kingspan Kooltherm® K8 Plus	
Insulant thickness (mm)	100 mm inner leaf of dense blockwork (1.13 W/mK)
90	0.19
130	0.14

* Calculations assume dense block outer leaf of λ -value (1.13 W/mK).

** 225 mm applies to the Republic of Ireland and 150 mm to Northern Ireland.

Internal finish - Kingspan Kooltherm® K18 Insulated Plasterboard

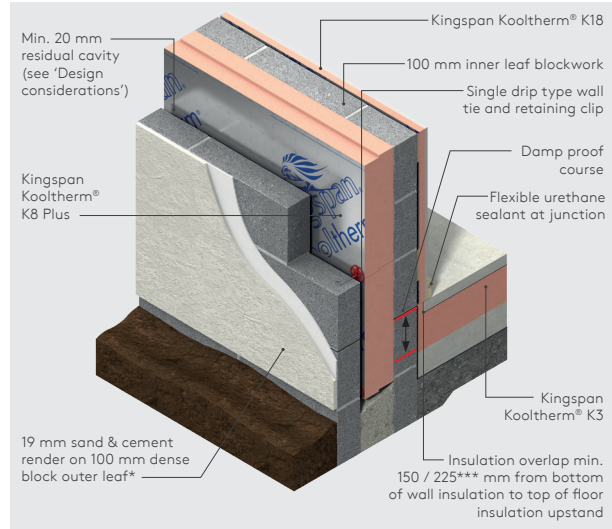


Figure 2

U-values (W/m ² K) for various thicknesses of Kingspan Kooltherm® K8 Plus and Kingspan Kooltherm® K18**	
Insulant thickness (mm)	100 mm inner leaf of dense blockwork (1.13 W/mK)
37.5 mm Kingspan Kooltherm® K18**	
90	0.16
130	0.12
52.5 mm Kingspan Kooltherm® K18**	
130	0.11

* Calculations assume dense block outer leaf of λ -value (1.13 W/mK).

** Product thickness = insulant thickness + 12.5 mm plasterboard.

*** 225 mm applies to the Republic of Ireland and 150 mm to Northern Ireland.

Typical constructions & U-values

Internal finish - 13 mm lightweight plaster

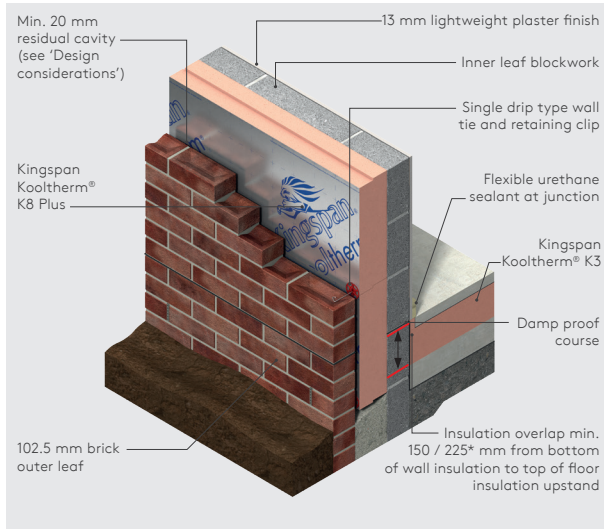


Figure 3

U-values (W/m ² K) for various thicknesses of Kingspan Kooltherm® K8 Plus	
Insulant thickness (mm)	100 mm inner leaf fair faced dense blockwork (1.13 W/mK)
90	0.19
130	0.14

* 225 mm applies to the Republic of Ireland and 150 mm to Northern Ireland.

Internal finish - Kingspan Kooltherm® K18

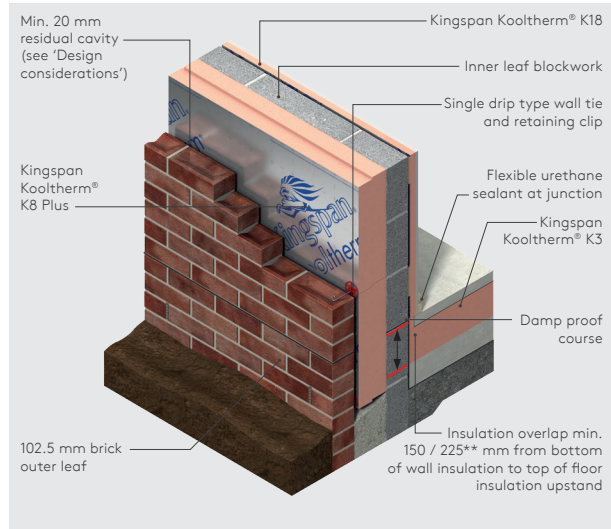


Figure 4

U-values (W/m ² K) for various thicknesses of Kingspan Kooltherm® K8 Plus and Kingspan Kooltherm® K18*	
Insulant thickness (mm)	100 mm inner leaf fair faced dense blockwork (1.13 W/mK)
37.5 mm Kingspan Kooltherm® K18*	
90	0.16
130	0.12
52.5 mm Kingspan Kooltherm® K18*	
130	0.11

* Product thickness = insulant thickness + 12.5 mm plasterboard.

** 225 mm applies to the Republic of Ireland and 150 mm to Northern Ireland.

Typical constructions & U-values

Heat loss & linear thermal bridging

Basic principles

Linear thermal bridging describes the additional heat losses or gains that occur at junctions between elements e.g. where a cavity wall meets the ground or intermediate floor, or at junctions around openings in the building fabric where the thermal insulation layer is discontinuous e.g. sills, jambs and lintels.

Interruptions within the insulation layer by materials with poorer insulating properties can result in a thermal bridge, which in turn can lead to problems of internal surface condensation and mould growth, especially if there is a drop in surface temperature.

The heat flow at these junctions and opening locations, over and above that through the adjoining plane elements, is the linear thermal transmittance of the thermal bridge: measured in W/mK; referred to as a 'psi-value'; and expressed as a ' Ψ -value'.

The lower the Ψ -value, the better the performance. Ψ -values are taken into account in the calculation methodologies e.g. the Building Energy Rating (BER) that are used to assess the operational CO₂ emissions and, where applicable, the fabric energy efficiency of buildings.

Ψ -values can comprise either, or a combination of approved, calculated or assumed values.

Approved details, such as the Acceptable Construction Details (Republic of Ireland), can uplift performance to provide a clear starting point towards achieving compliance, but they are limited in scope and applicability. The greatest opportunity for mitigating the impact of linear thermal bridges can come from following accurately 'modelled' details that take into account the following design considerations.

Reducing linear thermal bridging

Detailing at junctions to minimise the effects of thermal bridging and the associated risk of condensation or mould growth is important and there are some simple design considerations that can be adopted to help mitigate the risks and to reduce heat losses.

- Care is required to ensure continuation of insulation wherever possible for best thermal performance. Where this is not possible, insulation layers should be overlapped and ideally, insulation material introduced between. In a standard cavity wall-to-ground floor junction the main linear thermal bridge is the inner leaf of masonry. This linear thermal bridge can be reduced by increasing the distance that the heat has to travel through the inner leaf of masonry. This can be achieved by means of overlapping the partial fill cavity wall insulation and the floor insulation. The key factor is the distance between the bottom of the cavity wall insulation and the top of the floor insulation (including any perimeter insulation upstand).

- In order to minimise cold bridging at the edge of ground floors, the distance between the top surface of the floor insulation or perimeter insulation upstand, and the bottom of the wall insulation must be a minimum of 150 / 225* mm for a concrete floor and 200 mm for a suspended timber floor. The further appropriate wall insulation extends past the floor insulation, the better the thermal performance of the junction between the wall and the floor.

* 225 mm applies to the Republic of Ireland and 150 mm to Northern Ireland.

- Perimeter upstand insulation is extremely important for minimising heat losses from the junction with external walls. This helps to increase the path of heat flow and therefore helps reduce losses through the junction. Omitting this, or using a poorer performance insulation for this purpose, can increase these losses.
- Using better thermal performance 'lightweight' aggregate blockwork on the inner leaf in adjacency to the junction with the floor can also assist with assuring lower heat losses from the junction.
- An internal lining of insulation on the warm side of the construction such as Kingspan Kooltherm® K17 or K18 Insulated Plasterboard, can also help to reduce heat losses.
- Prevention of thermal bridging should be considered when designing sills, jambs and lintels. An insulated cavity closer e.g. Kingspan Kooltherm® Cavity Closer is available from Kingspan Insulation. Please contact the Kingspan Insulation Technical Service Department (see rear cover) for further information.
- Heat-loss from junctions around window or door openings can be further reduced by insulating the reveal. The key factor is the thermal resistance (R-value) of the insulation layer. Reveals should be designed to accommodate 37.5 mm (min.) of Kingspan Kooltherm® K18.
- For junctions between the external walls and roof constructions, continuity and overlap of insulation layers is the key to minimising heat losses from the junctions. Refer to the **Kingspan Kooltherm® K7 Pitched Roof Board literature** for further design considerations.

Design considerations

Responsible sourcing

Kingspan Kooltherm® K8 Plus produced at Kingspan Insulation's Castleblayney manufacturing facility is certified to BES 6001 (Framework Standard for the Responsible Sourcing of Construction Products) 'Good'.



NB The above information is correct at the time of writing. Please confirm at the point of need by visiting the **Kingspan Insulation website** from which a copy of Kingspan Insulation's certificates can be obtained..

Specification clause

Kingspan Kooltherm® K8 Plus should be described in specifications as:-

The cavity wall insulation shall be Kingspan Kooltherm® K8 Plus Cavity Board_____ mm thick: comprising a premium performance fibre-free rigid thermoset phenolic insulation core faced on both sides with a low emissivity scrim reinforced composite foil facing, with engineered ship lapped edges on the horizontal sides and square edges on the vertical sides. The product shall have a thermal conductivity of 0.021 W/mK. The product shall be manufactured under a management system certified to ISO 9001: 2015, ISO 14001: 2015, ISO 37301: 2021, ISO 45001: 2018 and ISO 50001: 2018; by Kingspan Insulation Limited; and installed in accordance with the instructions issued by them.

Design standards

The following should be consulted regarding the construction of insulated cavity walls:

- I.S. EN 845-1: 2013 + A1: 2016 (Specification for ancillary components of masonry. Wall ties, tension straps, hangers and brackets)
- I.S. EN 1996-1-1: 2005 + A1: 2012 (Eurocode 6. Design of masonry structures - Part 1-1: General rules for reinforced and unreinforced masonry structures)
- I.S. EN 1996-2: 2006 (Eurocode 6. Design of masonry structures - Design considerations, selection of materials and execution of masonry)
- I.S. EN 1996-3: 2006 (Eurocode 6. Design of masonry structures - Simplified calculation methods for unreinforced masonry structures)
- PD 6697: 2019 (Recommendations for the design of masonry structures to BS EN 1996-1-1 and BS EN 1996-2).

Residual cavity width

Kingspan Kooltherm® K8 Plus has been tested to BS 4315-2: 1970 (Methods of test for resistance to air and water penetration. Permeable walling constructions (water penetration)) to achieve a reduced residual cavity of minimum 20 mm. A greater residual cavity width may be required dependent on the exposure zone and the type of external finish. For further advice please contact the Kingspan Insulation Technical Service Department (see rear cover).

Wall ties

Wall ties should have a retaining clip for securing the insulant to the masonry plane and be of a double drip type. Ideally they should be BBA / NSAI approved and conform to I.S. EN 845-1: 2013 + A1: 2016, I.S. EN 1996-1-1: 2005 + A1: 2012, I.S. EN 1996-2: 2006, I.S. EN 1996-3: 2006 and PD 6697: 2019.

Lightning protection

Building designers should give consideration to the requirements of I.S. EN 62305: 2011 - 2012 (Protection against lightning).

Sitework

Fixing details

- Kingspan Kooltherm® K8 Plus is normally held in position by the wall ties used to tie the two skins of masonry together.
- Wall ties should include a retaining disc / clip and be of the single drip type with the offset drip placed centrally within the 20 mm clear cavity, ensuring the drip is installed facing downward.
- For a solid concrete ground floor, the first row of wall ties are installed in the inner leaf at 600 mm horizontal centres a minimum of one course of blockwork below the damp proof course or 225 mm below the top surface of the ground floor perimeter insulation upstand (see 'Linear thermal bridging at wall to floor junctions'), whichever is the lower.
- For a suspended timber floor the first row of wall ties are installed in the inner leaf at 600 mm horizontal centres a minimum of 200 mm below the top surface of the ground floor perimeter insulation upstand (see 'Linear thermal bridging at wall to floor junctions').
- Continue constructing the inner leaf up to the next wall tie course (450 mm above the first - usually 2 block courses).
- The next course of wall ties is positioned at the usual 750 mm horizontal centres.
- The next course of internal and external blockwork is installed to secure the ties ensuring cavity and ties remain free of excess mortar.
- The first row of insulation boards should now be installed between the two blockwork leaves ensuring each insulation board is adequately restrained to the inner leaf and joints are lightly butted.
- Kingspan Kooltherm® K8 Plus should be fitted with the high shoulder of the ship-lapped joint installed against the inner leaf to help prevent moisture from tracking across the cavity (see Figure 5 below).

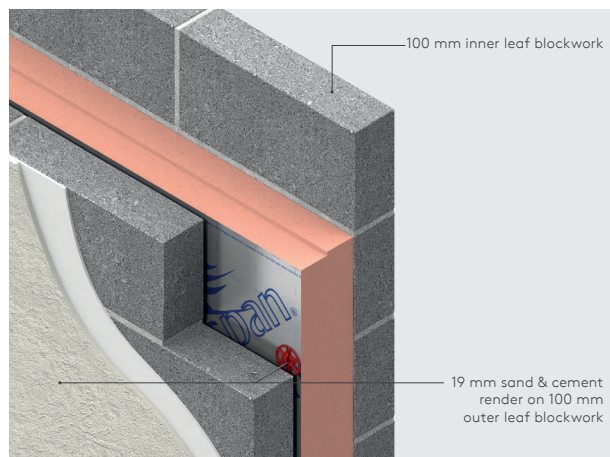


Figure 5 - Kingspan Kooltherm® K8 Plus installed against the inner leaf

- Each board should be secured at a minimum of three points. Additional ties may also be required to satisfy the structural requirements of I.S. EN 845-1: 2013 + A1: 2016, I.S. EN 1996-1-1: 2005 + A1: 2012, I.S. EN 1996-2: 2006, I.S. EN 1996-3: 2006, PD 6697: 2019 and / or to ensure adequate retention of boards or cut pieces.
- When forming any window or door openings, a strip of Kingspan Kooltherm® K12 Framing Board insulation, minimum 50 mm in Northern Ireland or 60 mm in the Republic of Ireland, should be used together with a strip of DPC around the perimeter of any opes.
- When insulating a gable, insulation boards should be continued 250 mm beyond the height of the top storey ceiling and a cavity tray installed above the insulation.
- Alternatively an insulated Kingspan Kooltherm® Cavity Closer is available from Kingspan Insulation which can provide improved thermal performance and Psi-values, whilst also being quicker and easier to install.

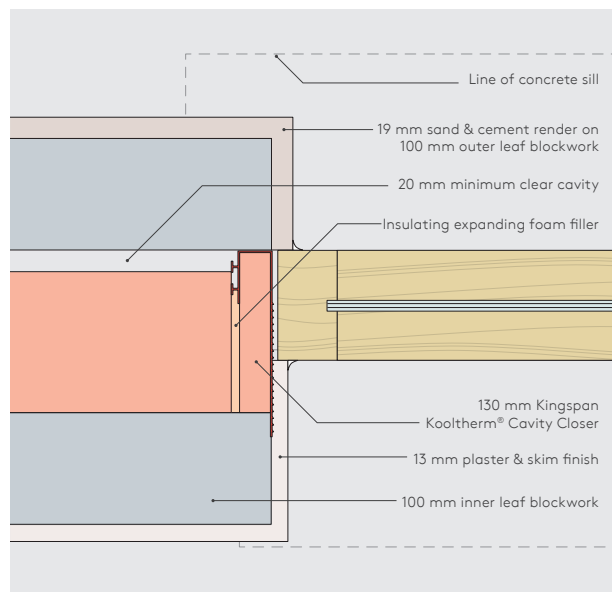


Figure 6 - Typical Kingspan Kooltherm® K8 Plus jamb detail

NB Kingspan Kooltherm® Cavity Closer is available in ROI only.

- The combination of engineered jointing, foil facers and minimal residual cavity means that Kingspan Kooltherm® K8 Plus does not require a vertical DPC at internal or external corners. There is also no requirement to tape the vertical or horizontal joints between boards.

Sitework

- When forming an external or internal corner, Kingspan Kooltherm® K8 Plus can either be mitred or butt-jointed together as outlined in Figures 7 & 8 below.



Figure 7 - Staggered board joint option



Figure 8 - Mitred board joint option

Excess mortar

- After raising each section of inner leaf, before installation of the insulation board, excess mortar should be removed and mortar droppings cleaned from exposed edges of the installed insulation boards.
- Use of a cavity batten or cavity board is recommended to protect board edges and maintain a clear cavity (see Figures 9 & 10).

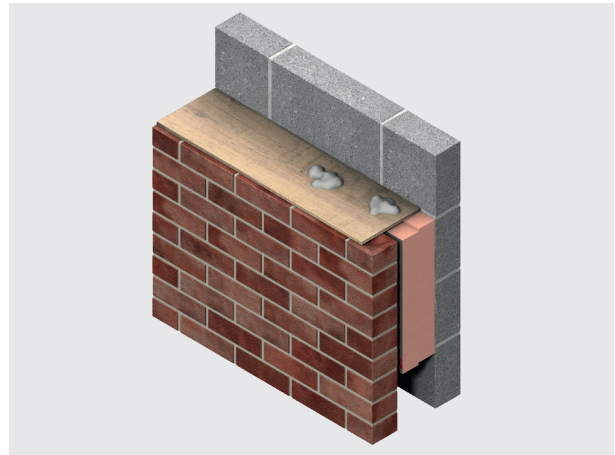


Figure 9 - Use of a cavity board to protect the cavity and insulation board top edge

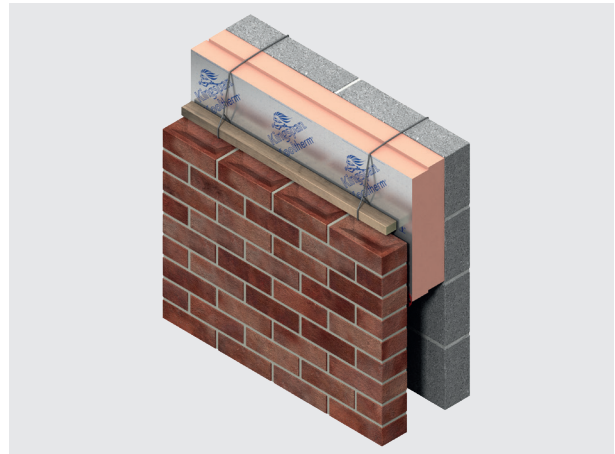


Figure 10 - Use of a cavity batten to protect the cavity

Sitework

General

Cutting

- Cutting should be carried out by first scoring the foil facing with a sharp knife. The board may then be cut with a short fine toothed saw before snapping the board over a straight edge and then cutting the foil facing on the other side.
- Ensure accurate trimming to achieve close butting joints and continuity of insulation.

Daily working practice

- At the completion of each day's work, or whenever work is interrupted for extended periods of time, board edges and joints should be protected from inclement weather.

Availability

- Kingspan Kooltherm® K8 Plus is available through specialist insulation distributors and selected builders' merchants throughout Ireland and Northern Ireland.

Packaging and storage

- The polyethylene packaging of Kingspan Insulation products, which is recyclable, should not be considered adequate for outdoor protection.
- Ideally, boards should be stored inside a building. If, however, outside storage cannot be avoided, then the boards should be stacked clear of the ground and covered with an opaque polythene sheet or weatherproof tarpaulin. Boards that have been allowed to get wet should not be used.

Health and safety

- Kingspan Insulation products are chemically inert.
- Warning - do not stand on or otherwise support your weight on this product unless it is fully supported by a load bearing surface.
- A Safety Information Data Sheet for this product is available from the Kingspan Insulation website www.kingspaninsulation.ie/safety.

Please note that the reflective surfaces on this product are designed to enhance its thermal performance. As such, they will reflect light as well as heat, including ultraviolet light. Therefore, if this product is being installed during very bright or sunny weather it is advisable to wear UV protective sunglasses or goggles, and if the skin is exposed for a significant period of time, to protect the bare skin with a UV block sun cream.

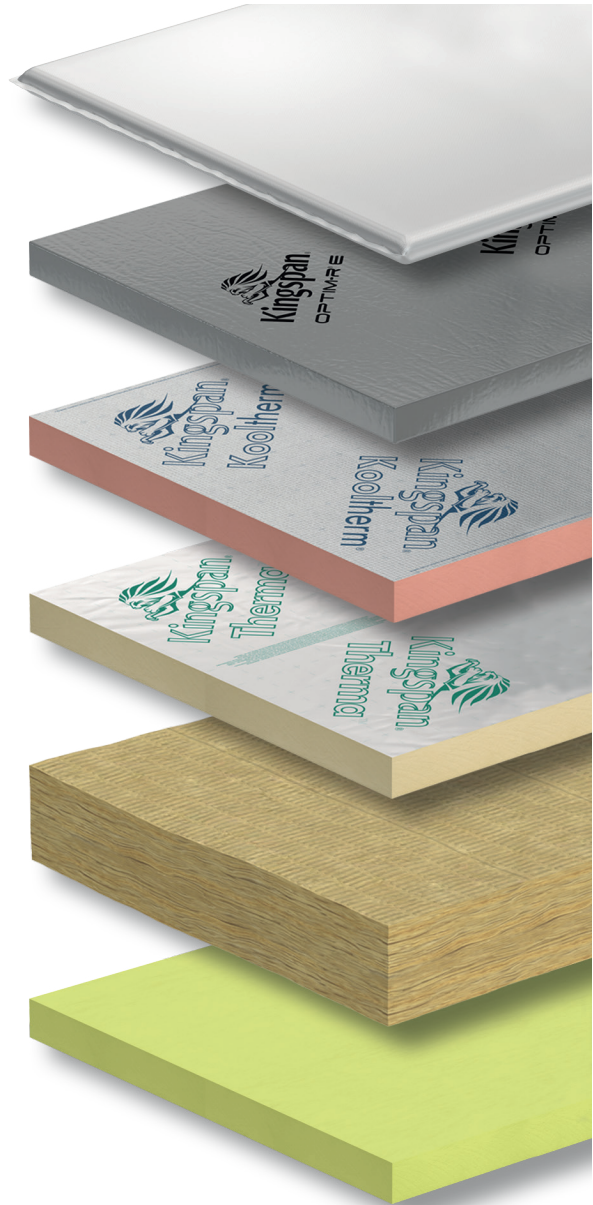
The reflective facings used on this product can be slippery when wet. Therefore, it is recommended that any excess material should be contained to avoid a slip hazard.

About Kingspan Insulation

Products & solutions

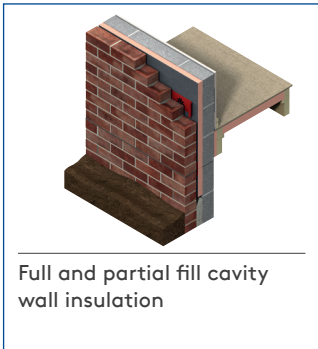
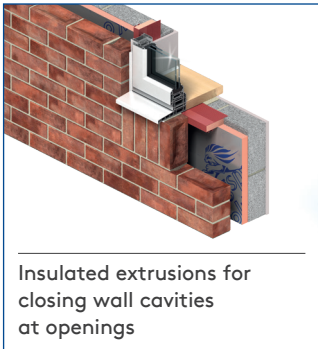
Rigid insulation products for building fabric applications, including roofs, walls and floors.

- Kingspan AlphaCore® - microporous silica-based insulation.
- Kingspan OPTIM-R® - vacuum insulation panel (VIP) systems.
- Kingspan Kooltherm® - phenolic insulation.
- Kingspan Therma™ - PIR insulation.
- K-Roc® - rock mineral fibre insulation.
- Kingspan GreenGuard® - extruded polystyrene insulation (XPS).
- Kingspan Aerobord® - expanded polystyrene (EPS)
- Kingspan TEK® - structural insulated panels (SIPs).
- Cavity closers - PVC-U extrusions with an insulation core.
- Membranes - for pitched roofs and walls.



About Kingspan Insulation

From new housing developments to refurbishing your home, we offer a number of different solutions for roof, wall and floor applications.

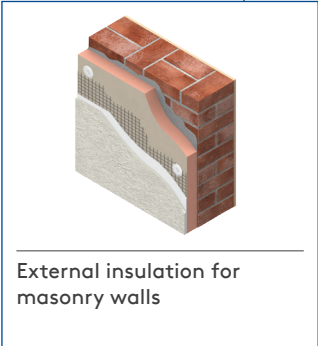
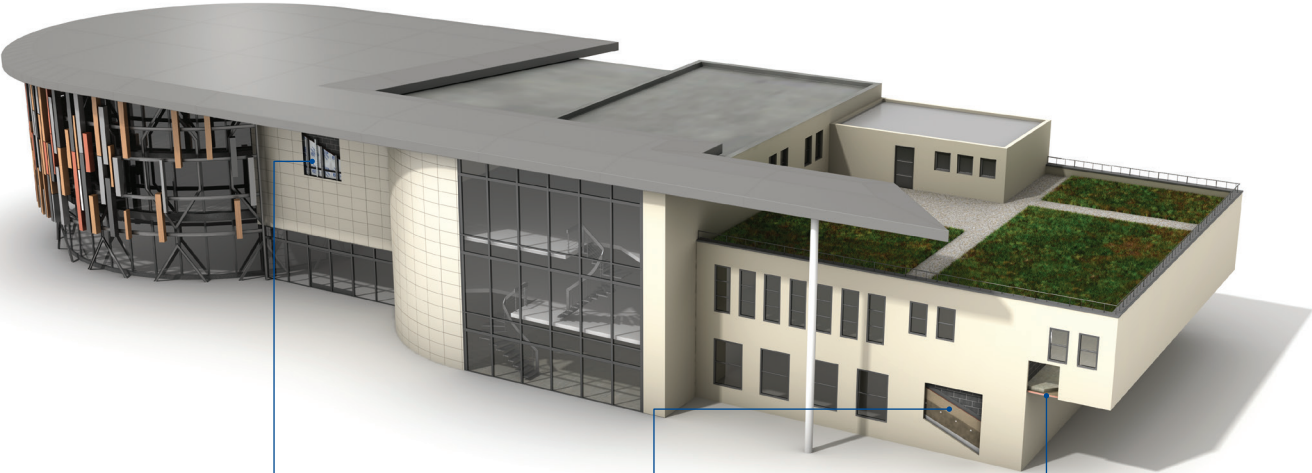


About Kingspan Insulation



About Kingspan Insulation

Solutions available for roofs, walls and floors of commercial buildings, from schools to retail.



About Kingspan Insulation

Company details

Kingspan Insulation Ltd is part of the Kingspan Group plc., one of Europe's leading construction product manufacturers. The Kingspan Group was formed in the late 1960s and is a publicly quoted group of companies headquartered in Kingscourt, County Cavan, Ireland.



Kingspan Insulation Ltd is a leading manufacturer of rigid insulation products and insulated systems for building fabric and building services applications.

Our site in Castleblayney, Ireland, is accredited to the independent compliance standard ISO 37301: 2021.



Services

Our support services provide fast and accurate advice no matter what your role is. Visit our website to access the following services.

- U-value calculations – free, quick and easy U-value calculations with our U-value Calculator.
- Help and advice on your projects, including stockists, how to guides, regulatory guidance and e-learning.
- Dedicated Specification and Sales teams to support projects.
- Building Information Modelling (BIM) – download BIM objects for our products.
- Tapered roofing service – Kingspan Insulation's tapered roofing systems come with a supporting design service to ensure the most cost-effective solution for a roof is identified.



- CPDs – Kingspan Insulation offers a number of free CPD seminars for architects and specifiers covering a wide range of industry topics. CPDs can be booked or a range of courses can be found online.



PLANET PASSIONATE

Planet Passionate is our group wide global sustainability programme.

Our Planet Passionate programme aims to have a positive impact on three big global challenges: climate change, circularity and protection of our natural world.



Scan for our latest progress report to learn more about our targets, partnerships and global commitments.

Contact details

Kingspan Insulation Ltd

Castleblayney | County Monaghan

T: +353 (0) 42 979 5000

E: info@kingspaninsulation.ie

www.kingspaninsulation.ie

For individual department contact details please visit

www.kingspaninsulation.ie/contact



Visit our free online U-value calculator.
Offering free, quick and easy calculations
for wall, floor and roof constructions.



For the most up-to-date
version of this brochure
please scan or click [here](#).

To access pre-existing product information or information relating to previously sold/discontinued products please email literature@kingspaninsulation.ie.

The information contained in this brochure is believed to be correct at the date of publication. Kingspan Insulation Limited ("Kingspan Insulation") reserves the right to alter or amend the product specifications without notice due to continuous improvement commitments. There may also be relevant changes between publications with regard to legislation, or other developments affecting the accuracy of the information contained in this brochure. Product thicknesses shown in this document should not be taken as being available ex-stock and reference should be made to the current Kingspan Insulation price-list or advice sought from Kingspan Insulation's Customer Service Department. The information, technical details and fixing instructions etc. included in this literature are given in good faith and apply to uses described. Kingspan Insulation does not accept responsibility for issues arising from using products in applications different from those described within this brochure or failure to correctly follow the information or instructions as described within this brochure. Recommendations for use should be verified with a suitable expert or professional for suitability and compliance with actual requirements, specifications and any applicable laws and regulations. For other applications or conditions of use, Kingspan Insulation offers a technical advisory service (see above for contact details), the advice of which should be sought for uses of Kingspan Insulation products that are not specifically described herein. Please check that your copy of this literature is current by contacting the Kingspan Insulation Marketing Department.

© Kingspan, Aerobord, AlphaCore, K-Roc, Kingspan GREENGUARD, Kooltherm, nilvent, OPTIM-R, TEK and the Lion Device are Registered Trademarks of the Kingspan Group plc in the UK, Ireland and other countries. All rights reserved

TM Therma is a Trademark of the Kingspan Group plc.

Kingspan Insulation Ltd is not associated with, and its products have not necessarily been tested by, the GREENGUARD Environmental Institute.

Registered in Ireland, No. 54621. Registered Office: Bree Industrial Estate, Castleblayney, Co. Monaghan, Ireland. VAT IE4575069I.

