

Insulation



KoolDuct®

Pre-Insulated Ductwork



- Thermal conductivity as low as $0.022\text{W}/(\text{m}\cdot\text{K})$ at 23°C mean temperature (ASTM C518-17)
- Lightweight yet durable
- Save on installation time

Fibre-free
Core


Kingspan®

Product Information

Product Overview

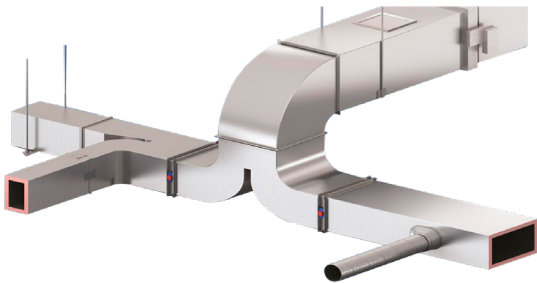


Figure 1. The Kingspan KoolDuct® System.

Designed for HVAC systems, KoolDuct is phenolic insulation suitable for residential, commercial, public, light industrial and leisure projects. It is designed for use in building services / HVAC applications.

Product Data

Kingspan KoolDuct®

Board Dimensions	1200 mm x 3930 mm			
Board Thickness	20 mm	22 mm	25 - 41 mm	≥ 41 mm
Product R-value*	R0.83	R0.92	R1.35	R2.0
Thermal Conductivity** (W/(m.K))	0.024		0.023	0.022

* All R-values are based on testing at 23°C and declared according to AS/NZS 4859.1:2018.

** All Thermal Conductivity Values are based on testing at 23°C to ASTM C518:2017

Contact Information

Asia Region

Kingspan Insulation Pte Ltd

1 Commonwealth Lane | #07-26/27 | Singapore 149544

T: (+65) 6653 2934

E: info@kingspaninsulation.asia

<https://www.kingspan.com/sg/en/business-groups/kingspan-insulation/>

© Kingspan and the Lion Device are Registered Trademarks of the Kingspan Group plc in Singapore, Malaysia, Vietnam, Thailand, the Philippines, and other countries. All rights reserved.

© KoolDuct is a Registered Trademark of the Kingspan Group plc in Singapore, Hong Kong, China, Singapore, Vietnam, South Korea, Malaysia, Indonesia, and other countries. All rights reserved.

No rights can be derived from this document. Changes, typesetting and printing errors reserved.
This version replaces all previous versions.

Kingspan Insulation Pte Ltd reserves the right to amend product specifications without prior notice. The information, technical details and fixing instructions etc. included in this literature are given in good faith and apply to uses described. Recommendations for use should be verified as to the suitability and compliance with actual requirements, specifications and any applicable laws and regulations. For other applications or conditions of use, Kingspan Insulation offers a Technical Advisory Service the advice of which should be sought for uses of Kingspan Insulation products that are not specifically described herein.

To ensure you are viewing the most recent and accurate product information, please visit this link:
www.kingspan.com/sg/en/products/hvac-insulation/pre-insulated-duct/koolduct/

