

Thermapitch® TP10

Insulation for tiled or slated pitched warm roof spaces



Contents

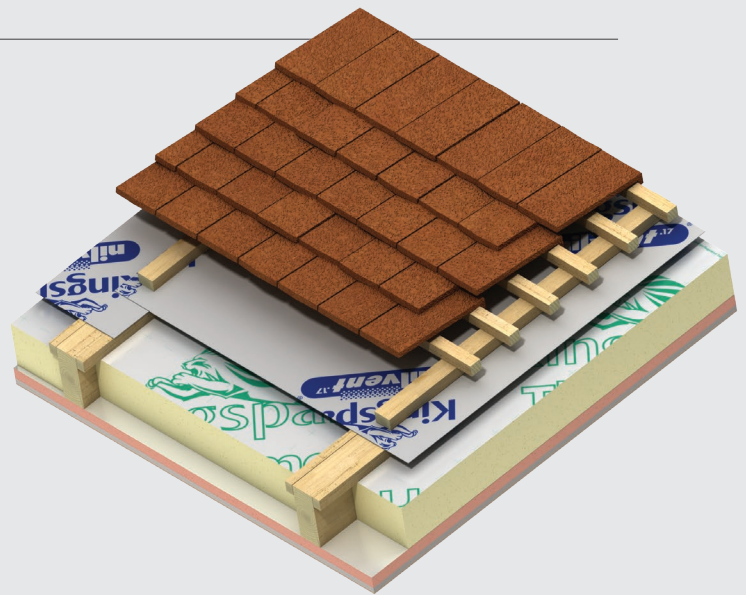
Introduction	3
Product details	4
The facings	4
The core	4
Standards & approvals	4
Standard dimensions	4
Compressive strength	4
Durability	4
Resistance to solvents, fungi & rodents	4
Fire performance	5
Thermal properties	5
Typical constructions & U-values	6
Assumptions	6
Image key	6
U-value table key	6
Unventilated - insulation between and under rafters at 400 mm centres	7
Ventilated and unventilated - Knee wall and Attic floor / ceiling level insulation	8
Linear thermal bridging at wall to pitched roof junctions	11
Design considerations	15
Responsible sourcing	15
Specification clause	15
Insulation at rafter level - choice of build up	15
Insulating at ceiling level - choice of build up	16
Mansard roofs / walls	16
Fire stops	16
Lightning protection	16
Sitework	17
Over rafter insulation	17
Between rafter insulation	17
Between joist insulation	18
Over joist insulation	18
Between knee wall stud insulation	18
Under rafter / joist or inside knee wall studs insulation	18
General	19
About Kingspan Insulation	20
Products & solutions	20
Company details	24
Services	24
Planet Passionate	25
Contact details	26

Introduction

- High performance rigid thermoset polyisocyanurate (PIR) insulation - thermal conductivity 0.022 W/mK
- Unaffected by air infiltration
- Resistant to the passage of water vapour
- Easy to handle and install compared to some other commonly used insulants
- Ideal for new build and refurbishment



Visit our [free online U-value calculator](#).
Offering free, quick and easy calculations
for wall, floor and roof constructions.



Useful links

Website

[Kingspan Thermapitch® TP10 webpage](#)

Certification

[Kingspan Thermapitch® TP10 BES 6001 Certificate](#)

Declaration of Performance (DoP)

[Kingspan Thermapitch® TP10 Declaration of Performance \(CE DoP\)](#)

Product details

The facings

Kingspan Thermapitch® TP10 is faced on both sides with a low emissivity composite foil, autohesively bonded to the insulation core during manufacture. This reflective, low emissivity surface improves the thermal resistance of any unventilated cavity adjacent to the board.

The core

The core of Kingspan Thermapitch® TP10 is a fibre-free rigid thermoset polyisocyanurate (PIR) insulant.



Standards and approvals

Kingspan Thermapitch® TP10 is manufactured in accordance with the requirements of EN 13165: 2012 + A2: 2016 (Thermal insulation products for buildings. Factory made rigid polyurethane foam (PU) products. Specification).

Kingspan Thermapitch® TP10 is also manufactured under a management system certified to ISO 9001: 2015 (Quality Management System), ISO 14001: 2015 (Environmental Management System), ISO 45001: 2018 (Occupational Health and Safety Management System), ISO 50001: 2018 (Energy Management System) and ISO 37301: 2021 (Compliance Management System).

The current manufactured range (in thicknesses 25 - 150 mm) produced at Kingspan Insulation's Castleblayney (Co. Monaghan) manufacturing facility is covered by NSAI Agrément Certificate 03/0196.



Standard dimensions

Kingspan Thermapitch® TP10 is available in the following standard size:

Nominal dimension		Availability
Length	(mm)	2400
Width	(mm)	1200
Insulant Thickness	(mm)	Refer to local distributor or Kingspan Insulation for current stock and non-stock sizes.

Compressive stress

The declared compressive stress of Kingspan Thermapitch® TP10 is 140 kPa at 10% compression when tested to EN 826 (Thermal insulating products for building applications. Determination of compression behaviour).

Durability

If correctly installed, Kingspan Thermapitch® TP10 will remain effective for the life of the building. Its durability depends on the supporting structure and the conditions of its use.

Resistance to solvents, fungi & rodents

The insulation core is resistant to short-term contact with petrol and with most dilute acids, alkalis and mineral oils. However, it is recommended that any spills be cleaned off fully before the boards are installed. Ensure that safe methods of cleaning are used, as recommended by suppliers of the spilt liquid. The insulation core is not resistant to some solvent-based adhesive systems, particularly those containing methyl ethyl ketone. Adhesives containing such solvents should not be used in association with this product. Damaged boards or boards that have been in contact with harsh solvents or acids should not be used.

The insulation core and facings used in the manufacture of Kingspan Thermapitch® TP10 resist attack by mould and microbial growth, and do not provide any food value to vermin.

Product details

Fire performance

Under System 4 AVCP, Kingspan Thermapitch® TP10 has a Euroclass rating of F.

Kingspan Thermapitch® TP10 when used within a pitched roof construction can meet the national requirements for external fire exposure when installed below an appropriate roof covering. For more information please consult with the tile / slate manufacturer.

Further details on the fire performance of Kingspan Insulation products may be obtained from the Kingspan Insulation Technical Service Department.

Thermal properties

The λ -values and R-values detailed below are quoted in accordance with EN 13165: 2012 + A2: 2016 (Thermal insulation products for buildings. Factory made rigid polyurethane foam (PU) products. Specification).

Thermal conductivity

The boards achieve a thermal conductivity (λ -value) of 0.022 W/mK.

Thermal resistance

Thermal resistance (R-value) varies with thickness and is calculated by dividing the thickness of the board (expressed in metres) by its thermal conductivity. The resulting number is rounded down to the nearest 0.05 (m²K/W).

Insulant thickness (mm)	Thermal resistance (m ² K/W)
25	1.10
30	1.35
40	1.80
50	2.25
60	2.70
70	3.15
80	3.60
90	4.05
100	4.50
120	5.45
130	5.90
140	6.35
150	6.80

NB Refer to local distributor or Kingspan Insulation for current stock and non-stock sizes.

Typical constructions and U-values

Assumptions

The U-values in the tables that follow have been calculated using the method detailed in EN ISO 6946: 2017 (Building components and building elements. Thermal resistance and thermal transmittance. Calculation methods). They are valid for the constructions shown in the details immediately above each table.

NB Calculations assume that the insulation core of Kingspan Kooltherm® K18 Insulated Plasterboard has a thermal conductivity of 0.25 W/mK.

NB When calculating U-values to EN ISO 6946: 2017, the type of mechanical fixing used may change the thickness of insulation required. Where Kingspan Kooltherm® K18 Insulated Plasterboard has been included in calculations for Figures 1, 2, 4a & 4, fixings are assumed to be carbon coated screws with a cross sectional area of 4 mm², with no fasteners, at a density of 16.70 m². The U-value calculations for Figure 3 assume that over rafter layers of insulation are fixed using stainless steel fixings with a cross sectional area 7.90 mm², with 3.7 fasteners per m² (insulant thickness 0-40 mm), 6.2 per m² (insulant thickness 41-60 mm), 8.3 per m² (insulant thickness 61-80 mm) and 10.0 per m² (insulant thickness 81-100 mm). The U-value calculations for Figure 3 also assume that over rafter layers of insulation are fixed using stainless steel fixings with a cross sectional area 9.1 mm², with 11.1 fasteners per m² (insulant thickness 101-125 mm). Please contact the Kingspan Insulation Technical Service Department for project calculations.

NB For the purposes of these calculations the standard of workmanship has been assumed good, and therefore the correction factor for air gaps has been ignored.

NB The figures quoted are for guidance only. A detailed U-value calculation and a condensation risk analysis should be completed for each project.

NB If your construction is different from those specified, and / or to gain a comprehensive U-value calculation along with a condensation risk analysis of your project, please consult the Kingspan Insulation Technical Service Department for assistance.


Image key

- 1 In Figures 1a & 3a the breathable sarking membrane can be placed over the counter-battens, draped to provide for drainage and overlain with tile / slate battens. This will yield a marginally better U-value but it will be more difficult to seal the breathable sarking membrane effectively.
- 2 The requirement for a vapour control layer and / or under tile ventilation should be assessed to BS 5250: 2021 (Management of moisture in buildings). Vapour check plasterboard or a separate vapour control layer can be used as preferred (see 'Design Considerations - Vapour Control Layer').
- 3 Kingspan Kooltherm® K18 contains an integral vapour control layer (see 'Design Considerations - Vapour Control Layer').
- 4 If tiles are to be used then this normally necessitates the use of counter-battens and tiling battens over the breathable sarking membrane to allow for water drainage and attachment of the tiles.

U-value table key

Further information on the applicable notional and area weighted average limiting U-values is available in the relevant geographical documentation:

- Technical Guidance Document L (Buildings other than Dwellings) to the Building Regulations for the Republic of Ireland and Technical Guidance Document L (Dwellings).
- Technical Booklets F1 & F2 to the Building Regulations for Northern Ireland.

Where an  is shown, the combination of insulation products may result in an interstitial condensation risk and so the calculations have been excluded.

Typical constructions and U-values

Ventilated - insulation between and under rafters at 400 mm centres (recommended for new build or re-roofing)

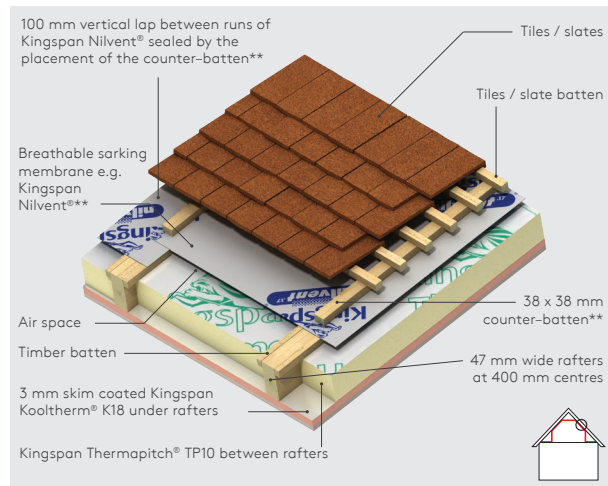


Figure 1

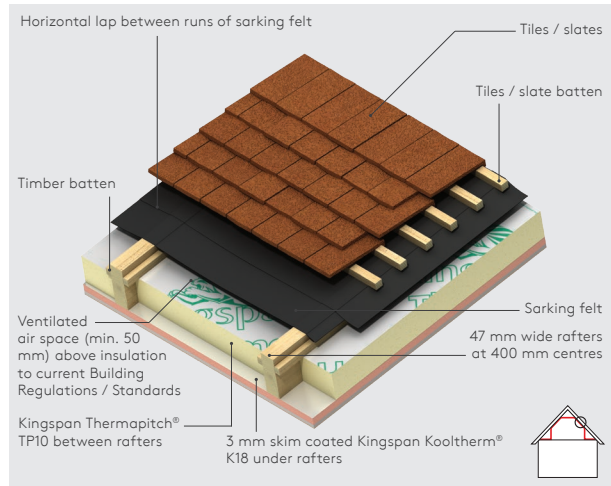


Figure 2

U-values (W/m ² K) for various thicknesses of Kingspan Kooltherm® K18 assuming rafters of depth shown partially filled with Kingspan Thermapitch® TP10			
Thickness of Kingspan Thermapitch® TP10 (mm)	Product thickness of Kingspan Kooltherm® K18 (mm)*		
	37.5	62.5	72.5
100 mm deep rafters			
50	0.32	0.24	0.22
60	0.29	0.22	0.20
70	0.27	0.21	0.19
75	0.26	0.20	0.18
125 mm deep rafters			
50	0.32	0.24	0.22
60	0.29	0.22	0.20
70	0.27	0.21	0.19
75	0.26	0.20	0.18
80	0.25	0.19	0.18
90	0.23	0.18	0.17
100	0.22	0.17	0.16
150 mm deep rafters			
50	0.32	0.24	0.22
60	0.29	0.22	0.20
70	0.27	0.21	0.19
75	0.26	0.20	0.18
80	0.25	0.19	0.18
90	0.23	0.18	0.17
100	0.22	0.17	0.16
110	0.20	0.16	0.15
120	0.19	0.15	0.14
125	0.19	0.15	0.14

* Product thickness = insulant thickness + 12.5 mm plasterboard.

** If sealing the roof is deemed to be unimportant, it is possible to lay the breathable membrane in horizontal runs, draped between rafters. This negates the requirement for counter battens. The U-values shown above remain valid.

NB Some values may have been omitted from the table because they do not meet the most common minimum requirements.

NB Refer to local distributor or Kingspan Insulation for current stock and non-stock sizes.

U-values (W/m ² K) for various thicknesses of Kingspan Kooltherm® K18 assuming rafters of depth shown partially filled with Kingspan Thermapitch® TP10		
Thickness of Kingspan Thermapitch® TP10 (mm)	Product thickness of Kingspan Kooltherm® K18 (mm)*	
	62.5	72.5
125 mm deep rafters		
60	0.22	0.20
70	0.21	0.19
75	0.20	0.18
150 mm deep rafters		
60	0.22	0.20
70	0.21	0.19
75	0.20	0.18
80	0.19	0.18
90	0.18	0.17
100	0.17	0.16

* Product thickness = insulant thickness + 12.5 mm plasterboard.

NB Refer to local distributor or Kingspan Insulation for current stock and non-stock sizes.

Typical constructions and U-values

Unventilated - insulation between and under rafters at 400 mm centres (recommended for new build or re-roofing)

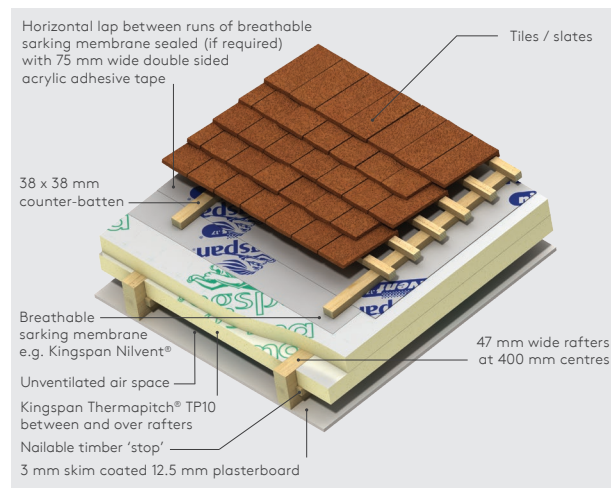


Figure 3

U-values (W/m ² K) for various thicknesses of Kingspan Thermapitch® TP10 and different rafter depths			
Thickness of Kingspan Thermapitch® TP10 (mm)	Rafter depth (mm)		
	100	125	150
40 + 40	0.25	0.25	0.25
50 + 50	0.21	0.21	0.21
60 + 60	0.18	0.18	0.18
70 + 70	0.16	0.16	0.16
75 + 75	0.15	0.15	0.15
80 + 80	0.14	0.14	0.14
90 + 90	0.13	0.13	0.13
100 + 100	0.12	0.12	0.12
100 + 110*	0.12	0.11	0.11

* First thickness refers to thickness between rafters, second thickness over rafters.

The thermal resistance of the over rafter layer of insulation must be \geq that of the between rafter layer so as to avoid condensation.

NB Some values may have been omitted from the table because they do not meet the most common minimum requirements.

NB Refer to local distributor or Kingspan Insulation for current stock and non-stock sizes.

Typical constructions and U-values

Ventilated and unventilated - Knee wall and Attic floor / ceiling level insulation

Knee wall - insulation between studs and inside studs

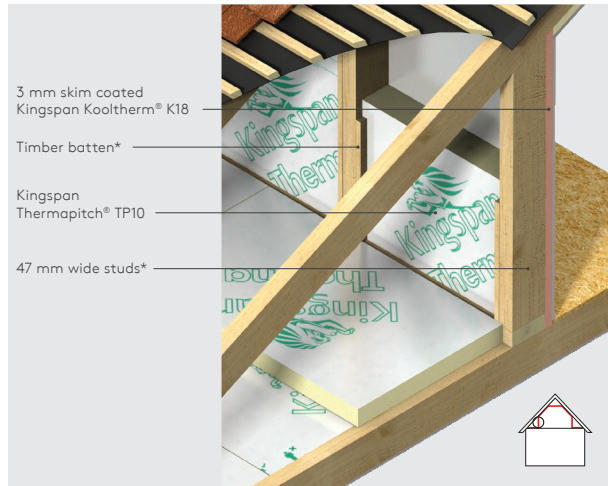


Figure 4

U-values (W/m ² K) for various thicknesses of Kingspan Kooltherm® K18 assuming studs shown filled with various thicknesses of Kingspan Thermapitch® TP10				
Thickness of Kingspan Thermapitch® TP10 (mm)	Product thickness of Kingspan Kooltherm® K18 (mm)			
	37.5		62.5	
	Stud centres (mm)		Stud centres (mm)	
	400	600	400	600
Ventilated construction				
40	0.34	0.32	⬆	⬆
50	0.31	0.29	0.23	0.22
60	0.28	0.26	0.21	0.21
70	0.26	0.24	0.20	0.19
75	0.25	0.23	0.19	0.19
80	0.24	0.22	0.19	0.18
90	0.22	0.21	0.18	0.17
100	0.21	0.19	0.16	0.16
110	0.20	0.18	0.16	0.15
120	0.19	0.17	0.15	0.14
125	0.18	0.17	0.15	0.14
130	0.18	0.16	0.14	0.13
140	0.17	0.15	0.14	0.13
150	0.16	0.15	0.13	0.12

* Where the insulation between studs exceeds the depth of the stud, the stud must be battened out to correspond with the thickness of insulation and horizontal timber 'stop' battens must be fixed to the outer surface of the stud to provide a 'stop' for the insulation boards so that they can finish flush with the inner surface of the timber studs.

** Product thickness = insulant thickness + 12.5 mm plasterboard.

NB Some values may have been omitted from the table because they do not meet the most common minimum requirements.

NB Refer to local distributor or Kingspan Insulation for current stock and non-stock sizes.

Typical constructions and U-values

Attic floor or flat ceiling - insulation between and over joists

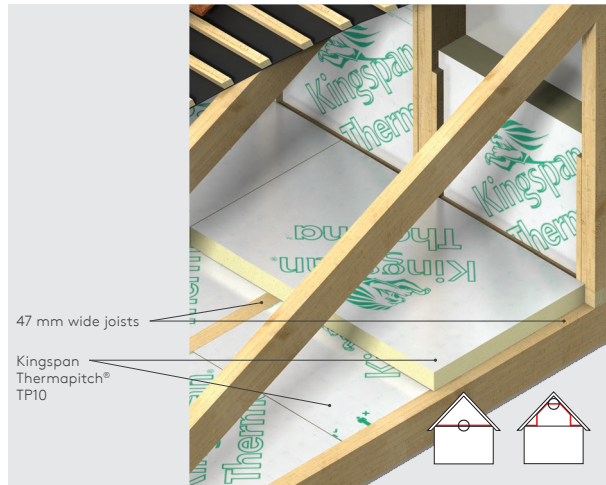


Figure 4b

U-values (W/m ² K) for various thicknesses of Kingspan Thermapitch® TP10 installed between and over joists of depths and centres shown		
Thickness of Kingspan Thermapitch® TP10 (mm)	Joist centres (mm)	
	400	600
	Ventilated construction	Ventilated construction
100 mm deep joists		
100 + 100	0.12	0.12
100 + 110*	0.11	0.11
125 mm deep joists		
125 + 125*	0.10	0.09
150 mm deep joists		
150 + 150	0.08	0.08

* First thickness refers to thickness between rafters, second thickness over rafters. The thermal resistance of the over rafter layer of insulation must be \geq that of the between rafter layer so as to avoid condensation.

NB Refer to local distributor or Kingspan Insulation for current stock and non-stock sizes.

Attic floor or collar tie - insulation between and under joists

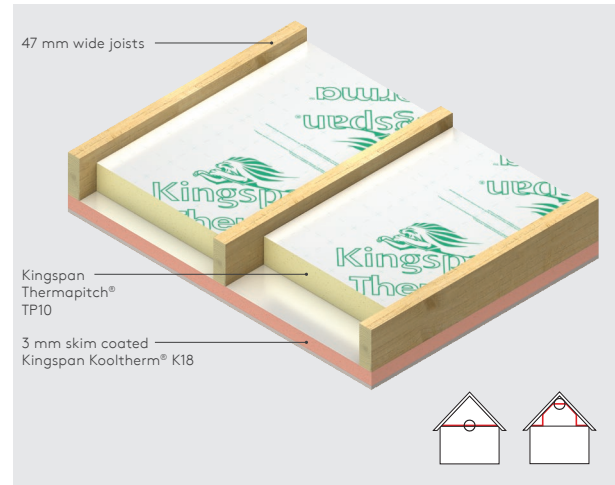


Figure 4c

U-values (W/m ² K) for various thicknesses of Kingspan Kooltherm® K18 assuming joists at centres shown with various thicknesses of Kingspan Thermapitch® TP10 installed between joists				
Thickness of Kingspan Thermapitch® TP10 (mm)	Thickness of Kingspan Kooltherm® K18 (mm)			
	62.5		72.5	
	Joist centres (mm)		Joist centres (mm)	
	400	600	400	600
Ventilated construction				
40	▲	▲	▲	▲
50	▲	▲	▲	▲
60	0.22	0.21	▲	▲
70	0.20	0.20	▲	▲
75	0.20	0.19	0.18	0.17
80	0.19	0.18	0.18	0.17
90	0.18	0.17	0.17	0.16
100	0.17	0.16	0.16	0.15
110	0.16	0.15	0.15	0.14
120	0.15	0.14	0.14	0.14
125	0.15	0.14	0.14	0.13
130	0.14	0.14	0.13	0.13
140	0.14	0.13	0.13	0.12
150	0.13	0.12	0.12	0.12

* Product thickness = insulant thickness + 12.5 mm plasterboard.

NB Where the insulation between joists exceeds the depth of the joist and access to the attic space is required, the joists must be battened out to correspond with the thickness of insulation and a protective layer (e.g chipboard / OSB) fixed over the insulation.

NB Refer to local distributor or Kingspan Insulation for current stock and non-stock sizes.

Typical constructions and U-values

Linear thermal bridging at wall to pitched roof junctions

Basic principles

Linear thermal bridging describes the heat loss / gain that occurs at junctions between elements e.g. where an external wall meets the roof, or at junctions around openings in the building fabric where the thermal insulation layer is discontinuous e.g. sills, jambs and lintels.

Interruptions within the insulation layer by materials with poorer insulating properties can result in a thermal bridge, which in turn can lead to problems of condensation and mould growth, especially if there is a drop in surface temperature.

The heat flow at these junctions and opening locations, over and above that through the adjoining plane elements, is the linear thermal transmittance of the thermal bridge: measured in W/mK ; referred to as a 'psi-value'; and expressed as a ' ψ -value'.

The lower the ψ -value, the better the performance. ψ -values are taken into account in the calculation methodologies e.g. the Dwelling Energy Assessment Procedure (DEAP) that are used to assess the operational CO_2 emissions and, where applicable, the fabric energy efficiency of buildings, primary energy or delivered energy rates.

ψ -values can comprise either, or a combination of, calculated and assumed values.

Reducing linear thermal bridging

Detailing at junctions to minimise the effects of thermal bridging and the associated risk of condensation or mould growth is important and there are some simple design considerations that can be adopted to help mitigate the risks and to reduce heat losses.

- For junctions between external walls and roof constructions, continuity and overlap of insulation layers is the key to minimising heat losses.
- Insulated plasterboard can be used on the inner blockwork leaf to improve eaves and gable performance.
- Increasing the insulation depth between and under rafters can help to improve eaves performance, although this may influence the truss design (stub end trusses can create additional depth at eaves).
- Care is required to ensure continuation of insulation to the soffit and into the eaves for best thermal performance.
- Lightweight aggregate blockwork to the inner leaf can help improve gable performance.
- For best gable junction thermal performance, it is important not to omit perimeter insulation between the first roof truss and the wall, or to stop cavity wall insulation short of the roof insulation.

The details in the images that follow (Figures 5a – 9b) represent typical detailing to achieve a good level of thermal performance, however the details included in this document may not be suitable for use in all circumstances. Where there is any uncertainty, Building Control Body (BCB) requirements and advice should always be sought and followed. All other site requirements and relevant building regulations must be taken into consideration when implementing the details.

Typical constructions and U-values

Unventilated - insulation between and under rafters (recommended for new build or re-roofing)

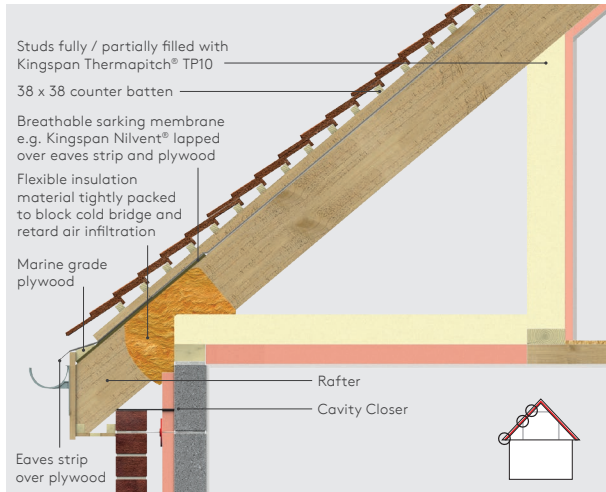


Figure 5a - Overhanging eaves detail

Ventilated - insulation between and under rafters (recommended for attic conversion where re-roofing is not intended)

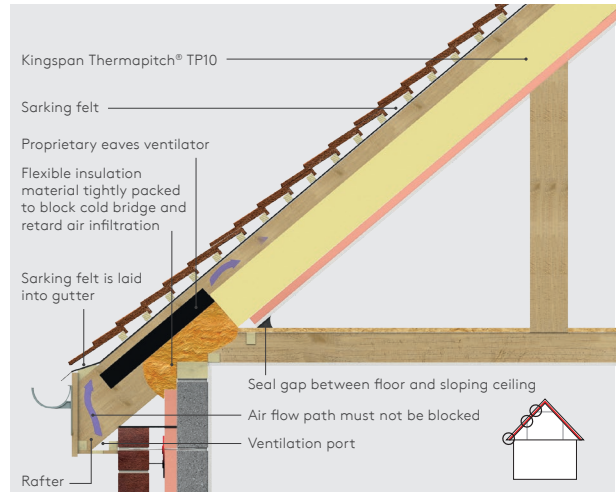


Figure 6a - Overhanging eaves detail

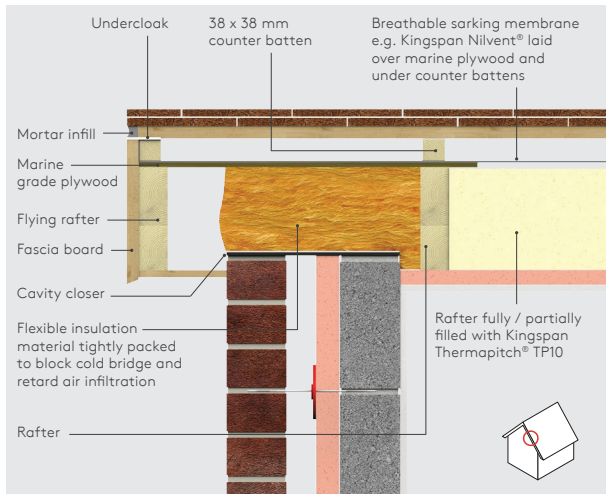


Figure 5b - Eaves detail

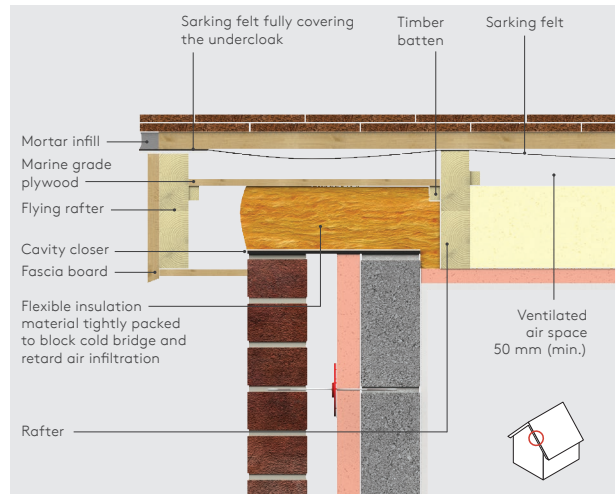


Figure 6b - Eaves detail

Typical constructions and U-values

Unventilated - insulation between and over rafters (recommended for new build or re-roofing)

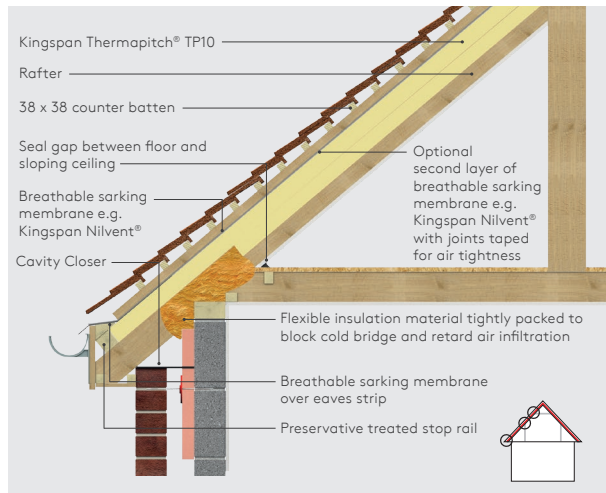


Figure 7a - Overhanging eaves detail

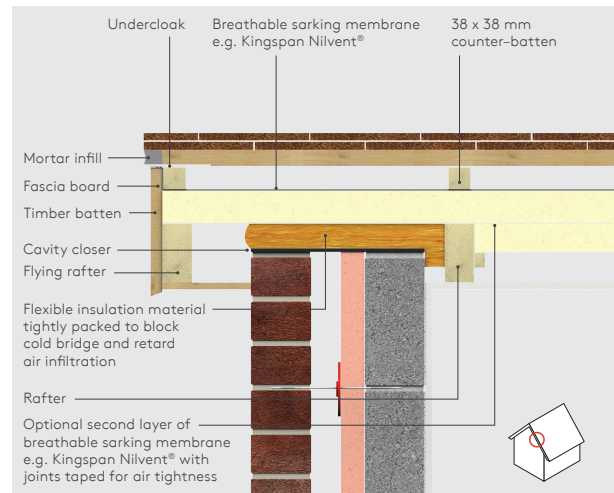


Figure 7c - Eaves detail

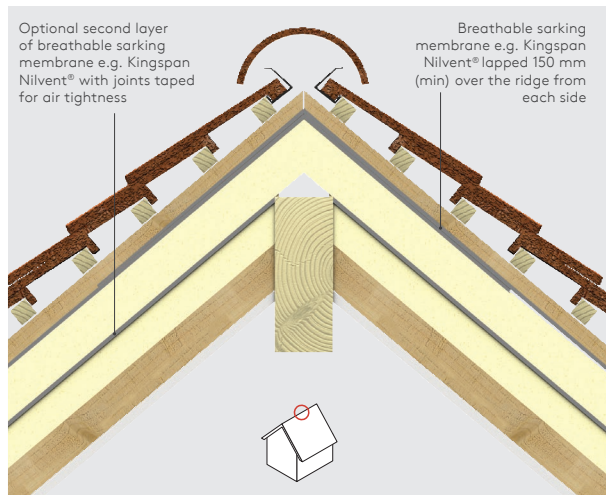


Figure 7b - Ridge detail

Typical constructions and U-values

Attic floor insulation - insulation between and over joists

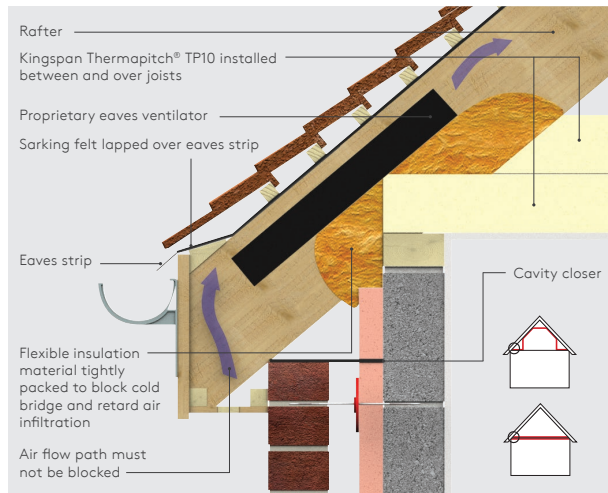


Figure 8a - Ventilated attic floor detail at eaves

Attic floor insulation - insulation between and under joists

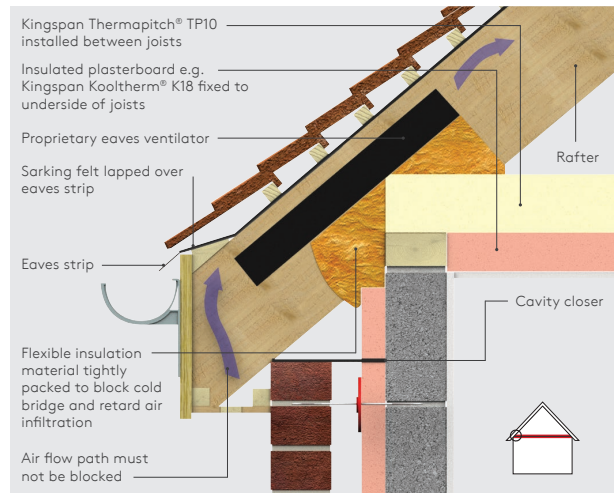


Figure 9a - Ventilated attic floor detail at eaves

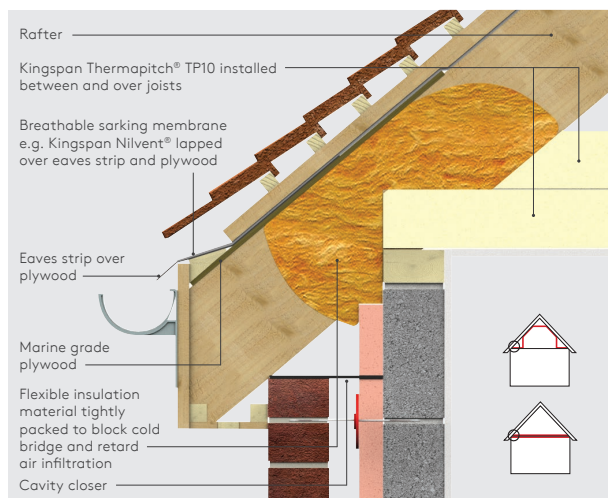


Figure 8b - Unventilated attic floor detail at eaves

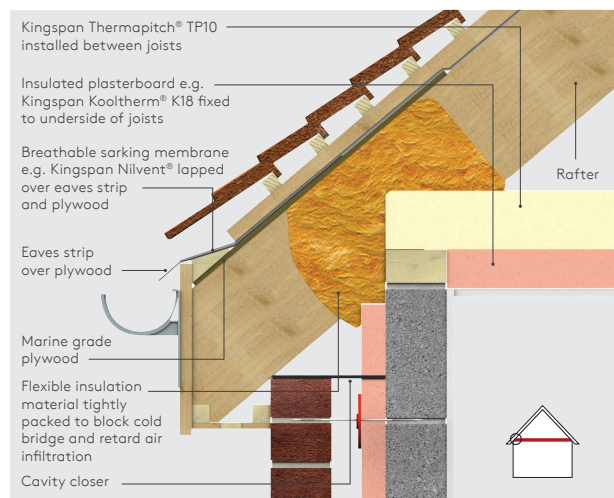


Figure 9b - Unventilated attic floor detail at eaves

Design considerations

Responsible sourcing

Kingspan Thermapitch® TP10 produced at Kingspan Insulation's Castleblayney (Co. Monaghan) manufacturing facility is certified to BES 6001 (Framework Standard for the Responsible Sourcing of Construction Products) 'Good'.



To download the certification please visit our [website](#).

Sustainability & responsibility

Kingspan Insulation has a long-term commitment to sustainability and responsibility: as a manufacturer and supplier of insulation products; as an employer; and as a substantial landholder; and as a key member of its neighbouring communities.

Specification clause

Kingspan Thermapitch® TP10 should be described in specifications as:-

The rafter / joist level insulation shall be Kingspan Thermapitch® TP10 _____ mm thick: comprising a rigid thermoset polyisocyanurate (PIR) insulation core faced on both sides with a low emissivity composite foil facing. The product shall be manufactured in accordance with the requirements of EN 13165: 2012 + A2: 2016; under a management system certified to ISO 9001: 2015, ISO 14001: 2015, ISO 45001: 2018, ISO 50001: 2018 and ISO 37301: 2021; by Kingspan Insulation Limited; and installed in accordance with the instructions issued by them.

Insulation at rafter level - choice of build up

Unventilated and ventilated constructions

There is generally a choice between unventilated and ventilated constructions, except in the case of refurbishment / attic conversions. In these instances, unless the whole roof is to be stripped or unless there is a breathable sarking membrane already in situ, it is impossible to use an unventilated roof, because a breathable sarking membrane cannot be installed.

Position of insulation

Dependent on the designed U-value of the construction and the available rafter depth and headroom, different approaches can be taken.

In most cases, approaches with layers of insulation between and over rafters are likely to yield very tall fascia boards and so, generally, between and under rafter insulation approaches are probably more desirable e.g. Figures 1 and 2. The exception to the rule is when very low U-values are required, in which case headroom may become an issue for between and under rafter solutions, so between and over rafter solutions may be more practical.

Unventilated roof - ventilation considerations

Unventilated roof approaches create a warm pitched roof space which does not require cross ventilation. Research suggests that sealing an unventilated roof yields a more energy efficient roof, as the impacts of ventilation and incidental infiltrating cold air can be minimised. Therefore, if creating an unventilated roof, it is preferable to fully seal all joints in the breathable sarking membrane (see 'Position of Breathable Sarking Membrane' below). Any water vapour reaching the breathable sarking membrane escapes without condensing. There is then adequate air movement beneath the tiles to dissipate this water vapour to the outside atmosphere. Tape for sealing joints in the breathable sarking membrane should be specified in accordance with the recommendations of the breathable membrane manufacturer.

The requirement for a vapour control layer and / or under-tile ventilation should be assessed to BS 5250: 2021 (Management of moisture in buildings).

Design considerations

Ventilated roof - ventilation considerations

In these cases the Building Regulations / Standards require a 50 mm ventilation air gap between the insulation and the sarking felt, so as to avoid condensation.

The requirement for a vapour control layer should be assessed to BS 5250: 2021 (Management of moisture in buildings).

Vapour control layer

If required, the vapour resistance of the roof lining can be increased by the use of a vapour check plasterboard*, the use of Kingspan Kooltherm® K18, which contains an integral vapour control layer*, the use of a layer of polythene sheeting*, or by the application of two coats of Gyproc Drywall Sealer.

* With appropriate detailing at joints, penetrations and roof perimeters.

Breathable sarking membrane

BS 5250: 2021 (Management of moisture in buildings) recommends that low resistance breathable sarking membranes for use in unventilated systems must not have a vapour resistance that exceeds 0.25 MNs/g, e.g. Kingspan Nilvent®.

Position of breathable sarking membrane

The sealing of breathable sarking membrane joints with tape is considerably easier to achieve if the membrane is installed on a continuous surface (Figure 3).

In these cases the breathable sarking membrane is installed under the counter-battens (which provide a channel for water drainage) or, in situations with a sarking board under a natural slated roof, the breathable sarking membrane is installed directly under the slates (as neither tile battens nor counter-battens are used).

Generally, when a continuous surface is available, it will prove easier to install the breathable sarking membrane in horizontal runs, whilst still enabling easy sealing between runs.

In roofs with no continuous surface (Figure 1), it is preferable, though more difficult, to install the breathable sarking membrane in vertical runs with junctions between runs sealed by counter-battens placed over the laps in rafter positions. The breathable sarking membrane is installed taut as the counter-batten provides a space for water drainage.

Recommended solutions for new build / re-roofing

The ideal solution for new build or re-roofing projects is, therefore, between and under rafter insulation with a continuous surface for the breathable sarking membrane so that it can be installed in horizontal runs under counter-battens with laps sealed with tape.

The next best solution is, therefore, between and under rafter insulation with no continuous surface for the breathable sarking membrane, and the breathable sarking membrane installed in vertical runs with laps sealed under counter-battens (Figure 1).

Where very low U-values are required, for new build or re-roofing projects, the ideal solution is between and over rafter insulation with the breathable sarking membrane installed in horizontal runs under counter battens with laps sealed with tape (Figure 3).

Insulating at ceiling level - choice of build up

When insulating at ceiling level in a pitched roof with attic insulation between and over joists (Figures 4b, 8a & 8b) it is vital to ensure the continuity of insulation at the specified R-value right to the eaves. This can be difficult because of the angle of pitch of the roof and the position of the rafters can prevent the insulation laid over the joists from being fitted all the way to the eaves. The use of Kingspan Thermapitch® TP10 in between joists and Kingspan Kooltherm® K18 below joists (Figures 4c, 9a & 9b) allows continuity of insulation and can minimise heat loss from this linear thermal bridge.

Mansard roofs / walls

Kingspan Thermapitch® TP10 can be used for the construction of insulated tiled or slated mansard roofs / walls. Design and installation guidance is as for pitched roofs.

Fire stops

Current Building Regulations / Standards should be considered with regard to the requirements for, and provision of, fire stops.

Reference should also be made to 'Structural Timber Buildings Fire Safety in Use Guidance Volume 2 - Cavity Barriers and Fire Stopping' by the Structural Timber Association.

For specialist advice, including configuration and installation, refer to:

Kingspan Technical Insulation Ltd
www.kingspanpassivefireprotection.co.uk
+44 (0) 1524 388 898

Lightning protection

Building designers should give consideration to the requirements of EN 62305-1: 2011 (Protection against lightning).

Sitework

Over rafter insulation

General

- A preservative treated stop rail should be secured to the rafters at the eaves.
- Kingspan Thermapitch® TP10 may be laid either across or down the line of the rafters and should be laid lightly butted and preferably break bonded.
- All board joints running from eaves to ridge must occur over rafters.
- Ensure continuity of insulation at the ridge of the roof.
- There is no necessity to tape board joints.

Over rafter insulation

- Lay 38 x 38 mm treated softwood counter-battens in line with the rafters.
- Secure the counter-battens to the rafters by fixing through both the counter-battens and the insulation boards.

Fixings for over rafter insulation

- Approved fixings should be applied at centres appropriate to the design of the roof and location of the building.

Refer to:

MAK Fasteners +353 (0) 1 451 99 00
www.makfasteners.com

Ancon Building Products +44 (0) 114 275 5224
www.ancon.co.uk

Helifix Limited +44 (0) 20 8735 5222
www.helifix.co.uk

Target Fixings Limited +44 (0) 1635 58 00 88
www.targetfixings.com

Wallfast Limited +44 (0) 23 9229 8443
www.wallfast.co.uk

Between rafter insulation

Between rafter insulation partially filled flush to the top surface of rafters

- If Kingspan Thermapitch® TP10 is to be installed between and over rafters, the between rafter layer must be flush with the top of the rafters in order to prevent the risk of air movement between the two layers of insulation boards.
- If the between rafter layer of insulation is to be fitted from the outside, install the insulation with the use of timber 'stop' battens.
- Push insulation, trimmed to suit rafter spacings, between the rafters so they are flush with the top surface of the rafters.

- Side-nail treated softwood battens to the rafters to hold the boards in place.

Between rafter insulation partially filled flush to the bottom surface of rafters

- Kingspan Thermapitch® TP10 installed between rafters must be flush with the bottom of the rafters in order to prevent the risk of air movement between the boards and the ceiling.
- Where the insulation between rafters is to be flush with the bottom of the rafters but does not fill the full rafter depth, install the insulation, trimmed to suit rafter spacings, with the aid of treated softwood battens nailed to the side of the rafters to provide a 'stop' above the insulation.
- The battens should be in the appropriate position to ensure the insulation is flush with the bottom of the rafters.
- An additional restraint to the insulation boards will be provided by Kingspan Kooltherm® K18 fixed to the inside face of the rafters.

Between joist insulation

- Kingspan Thermapitch® TP10 installed between joists must be flush with the bottom of the joists in order to prevent the risk of air movement between the boards and the ceiling.
- Install the correct thickness of insulation, trimmed to suit rafter spacings, in such a manner that it is flush with the bottom of the joists.
- The insulation must not be used as a weight bearing surface and, if the thickness of insulation exceeds the depth of the joists, batten out the joists such that they stand proud of the insulation.
- Where there is no over joist insulation, and the attic is to be used for storage, 9 mm (min.) plywood / chipboard / OSB should be mechanically fixed over the joists. Where pedestrian access is required, 18 mm (min.) plywood / chipboard / OSB should be installed instead.

Over joist insulation

- If Kingspan Thermapitch® TP10 is to be installed between and over joists, the between joist layer must fully fill the joist depth, so that it is flush with the bottom and the top of the joists, in order to prevent the risk of air movement either above or below the insulation boards. It must not stand proud above the joists, otherwise a gap would be created over the joists themselves.
- The insulation over joists must be tapered so it fits snugly under rafters at the eaves.
- The insulation must not be used as a weight bearing surface. If attic storage, or pedestrian access to the attic area, is necessary, it is recommended that one of the following options is adopted.
- Where the attic is to be used for storage, 9 mm (min.) plywood / chipboard / OSB should be mechanically fixed over the joists, with the over joist insulation layer laid on top. Where pedestrian access is required, a further layer of 18 mm (min.) plywood / chipboard / OSB should also be installed over the insulation boards.
- A proprietary insulated attic storage, or pedestrian access, board can be installed.
- Alternatively, treated softwood battens should be laid perpendicular to the joists, at 600 mm (max.) centres, and fixed to them. The depth of the battens should be \geq to that of the over joist insulation layer. The over joist insulation layer is installed between the battens following the guidance for between joist insulation (above). 18 mm (min.) plywood / chipboard / OSB should be mechanically fixed over the battens.

Between knee wall stud insulation

- Kingspan Thermapitch® TP10 installed between studs must be flush with the inside surface of the studs in order to prevent the risk of air movement between the boards and plasterboard / insulated plasterboard.
- Nail treated softwood battens to the side of studs to provide a 'stop' and prevent the insulation boards moving within the stud cavity.
- This 'stop' should be positioned such that the insulation boards finish flush with the inside surface of the studs.
- If the insulation boards are thicker than the timber studs fix appropriately sized treated softwood battens to the back of the studs and fix timber 'stop' straps diagonally to the battens in an appropriate pattern to hold the insulation boards in place. Each board must be restrained by a minimum of two diagonal straps.
- Insulation boards may be temporarily held in place with large headed clout nails fixed through the 'stop' battens / straps.
- The boards will be further restrained by the plasterboard / insulated plasterboard lining fixed to the inside face of the timbers.
- To avoid air leakage, any penetrations through the insulation (electrical sockets, plumbing and wiring etc) should be sealed with flexible sealant or equivalent, or a combination of flexible polyurethane foam and flexible sealant or equivalent.

Under rafter / joist or inside knee wall studs insulation

- Please refer to literature for Kingspan Kooltherm® K18. This literature is available from the Kingspan Insulation Marketing Department or from the Kingspan Insulation website (see rear cover for details).

Sitework

General

Fitting insulation boards between rafters / joists / studs

- Measure the distance between the rafters / joists / studs before cutting the boards as spacings can vary.
- Ensure that insulation boards are lightly butted and that there is a tight fit between the insulation and the rafters / joists / studs.
- Fill all gaps with expanding urethane sealant.

Surface treatment

- Kingspan Thermapitch® TP10 is not intended to provide an internal finish and should be underlined with a suitable building board.

Cutting

- Cutting should be carried out either by using a fine toothed saw, or by scoring with a sharp knife, snapping the board over a straight edge and then cutting the facing on the other side.
- Ensure accurate trimming to achieve close-butting joints and continuity of insulation.

Daily working practice

- At the completion of each day's work, or whenever work is interrupted for extended periods of time, board edges and joints should be protected from inclement weather.

Availability

- Kingspan Thermapitch® TP10 is available through specialist insulation distributors and selected builders' and roofing merchants throughout the Republic of Ireland and Northern Ireland.

Packaging and storage

- The polyethylene packaging of Kingspan Insulation products, which is recyclable, should not be considered adequate for outdoor protection.
- Ideally, boards should be stored inside a building. If, however, outdoor storage cannot be avoided the boards should be stacked clear of the ground and covered with an opaque polythene sheet or weatherproof tarpaulin. Boards that have been allowed to get wet should not be used.

Health and safety

- Kingspan Insulation products are chemically inert.
- A Safety Information Data Sheet for this product is available from the Kingspan Insulation website www.kingspaninsulation.ie/safety.

Please note that the reflective surfaces on this product are designed to enhance its thermal performance. As such, they will reflect light as well as heat, including ultraviolet light. Therefore, if this product is being installed during very bright or sunny weather, it is advisable to wear UV protective sunglasses or goggles, and if the skin is exposed for a significant period of time, to protect the bare skin with a UV block sun cream.

The reflective facings used on this product can be slippery underfoot when wet. Therefore, it is recommended that any excess material should be contained to avoid a slip hazard.

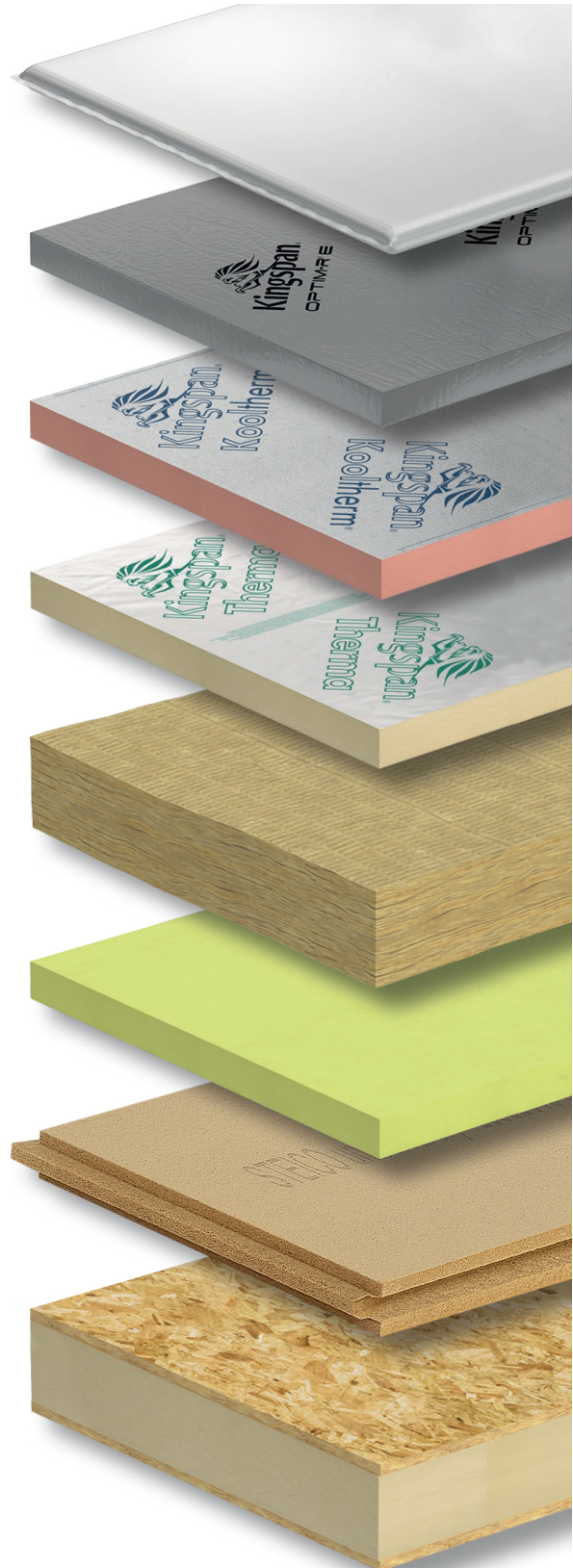
Warning - do not stand on or otherwise support your weight on this product unless it is fully supported by a load bearing surface.

About Kingspan Insulation

Products & solutions

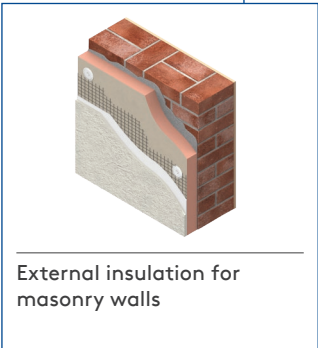
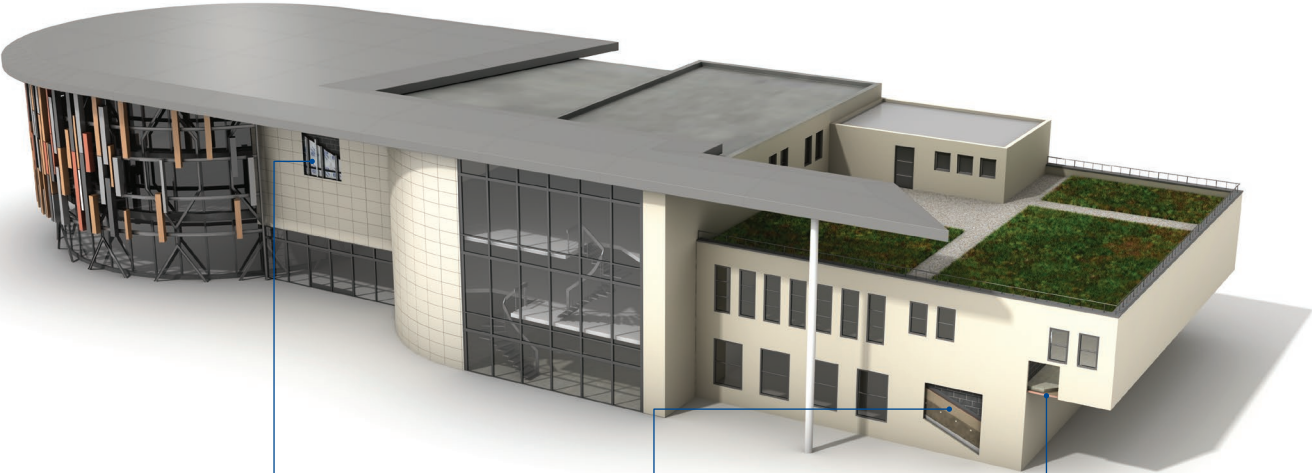
Rigid insulation products for building fabric applications, including roofs, walls and floors.

- Kingspan AlphaCore® – microporous silica-based insulation.
- Kingspan OPTIM-R® – vacuum insulation panel (VIP) systems.
- Kingspan Kooltherm® – phenolic insulation.
- Kingspan Therma™ – PIR insulation.
- K-Roc® – rock mineral fibre insulation.
- Kingspan GreenGuard® – extruded polystyrene insulation (XPS).
- STEICO – wood fibre insulation
- Kingspan TEK® – structural insulated panels (SIPs).
- Cavity closers – PVC-U extrusions with an insulation core.
- Membranes – for pitched roofs and walls.



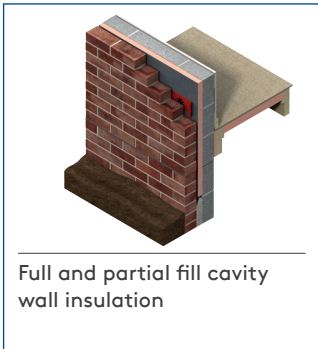
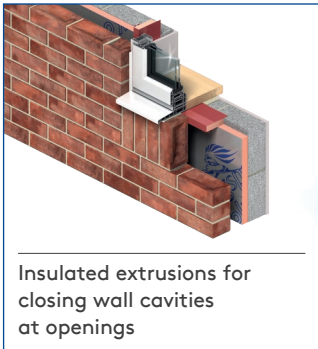
About Kingspan Insulation

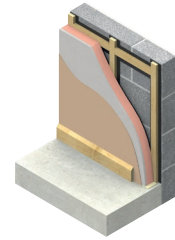
Solutions available for roofs, walls and floors of commercial buildings, from schools to retail.



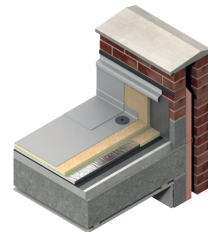
About Kingspan Insulation

From new housing developments to refurbishing your home, we offer a number of different solutions for roof, wall and floor applications.

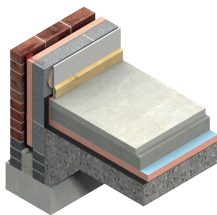




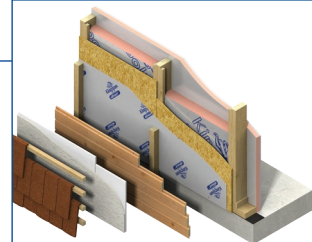
Insulation for tiled or slated pitched warm roof spaces



Insulation for flat roofs and terraces



Insulation for floors



Insulation for timber and steel framing systems

About Kingspan Insulation

Company details

Kingspan Insulation Ltd is part of the Kingspan Group plc., one of Europe's leading construction product manufacturers. The Kingspan Group was formed in the late 1960s and is a publicly quoted group of companies headquartered in Kingscourt, County Cavan, Ireland.



Kingspan Insulation Ltd is a leading manufacturer of rigid insulation products and insulated systems for building fabric and building services applications.

Our site in Castleblayney, Ireland, is accredited to the independent compliance standard ISO 37301: 2021.



Services

Our support services provide fast and accurate advice no matter what your role is. Visit our website to access the following services.

- U-value calculations – free, quick and easy U-value calculations with our U-value Calculator.
- Help and advice on your projects, including stockists, how to guides, regulatory guidance and e-learning.
- Dedicated Specification and Sales teams to support projects.
- Building Information Modelling (BIM) – download BIM objects for our products.
- Tapered roofing service – Kingspan Insulation's tapered roofing systems come with a supporting design service to ensure the most cost-effective solution for a roof is identified.



- CPDs – Kingspan Insulation offers a number of free CPD seminars for architects and specifiers covering a wide range of industry topics. CPDs can be booked or a range of courses can be found online.



PLANET PASSIONATE

Planet Passionate is our group wide global sustainability programme.

Our Planet Passionate programme aims to have a positive impact on three big global challenges: climate change, circularity and protection of our natural world.



Scan for our latest progress report to learn more about our targets, partnerships and global commitments.

Contact details

Kingspan Insulation Ltd

Castleblayney | County Monaghan

T: +353 (0) 42 979 5000

E: info@kingspaninsulation.ie

www.kingspaninsulation.ie

For individual department contact details please visit

www.kingspaninsulation.ie/contact



Visit our free online U-value calculator.
Offering free, quick and easy calculations
for wall, floor and roof constructions.



For the most up-to-date
version of this brochure
please scan or click [here](#).

To access pre-existing product information or information relating to previously sold/discontinued products please email literature@kingspaninsulation.co.uk.

The information contained in this brochure is believed to be correct at the date of publication. Kingspan Insulation Limited ("Kingspan Insulation") reserves the right to alter or amend the product specifications without notice due to continuous improvement commitments. There may also be relevant changes between publications with regard to legislation, or other developments affecting the accuracy of the information contained in this brochure. Product thicknesses shown in this document should not be taken as being available ex-stock and advice should be sought from Kingspan Insulation's Customer Service Department. The information, technical details and fixing instructions etc. included in this literature are given in good faith and apply to uses described. Kingspan Insulation does not accept responsibility for issues arising from using products in applications different from those described within this brochure or failure to correctly follow the information or instructions as described within this brochure. Recommendations for use should be verified with a suitable expert or professional for suitability and compliance with actual requirements, specifications and any applicable laws and regulations. For other applications or conditions of use, Kingspan Insulation offers a technical advisory service (see above for contact details), the advice of which should be sought for uses of Kingspan Insulation products that are not specifically described herein. Please check that your copy of this literature is current by contacting the Kingspan Insulation Marketing Department.

© Kingspan, Thermawall, AlphaCore, K-Roc, Kingspan GREENGUARD, Kooltherm, OPTIM-R, TEK and the Lion Device are Registered Trademarks of the Kingspan Group plc in the UK, Ireland and other countries. All rights reserved.

TM Therma is a Trademark of the Kingspan Group plc.

Kingspan Insulation Ltd is not associated with, and its products have not necessarily been tested by, the GREENGUARD Environmental Institute.

Registered in Ireland, No. 54621. Registered Office: Bree Industrial Estate, Castleblayney, Co. Monaghan, Ireland. VAT IE4575069I.

