

Thermataper® TT47 Systems

Tapered insulation for flat roofs waterproofed with fully adhered single-ply, partially bonded built-up felt, mastic asphalt and cold liquid applied waterproofing

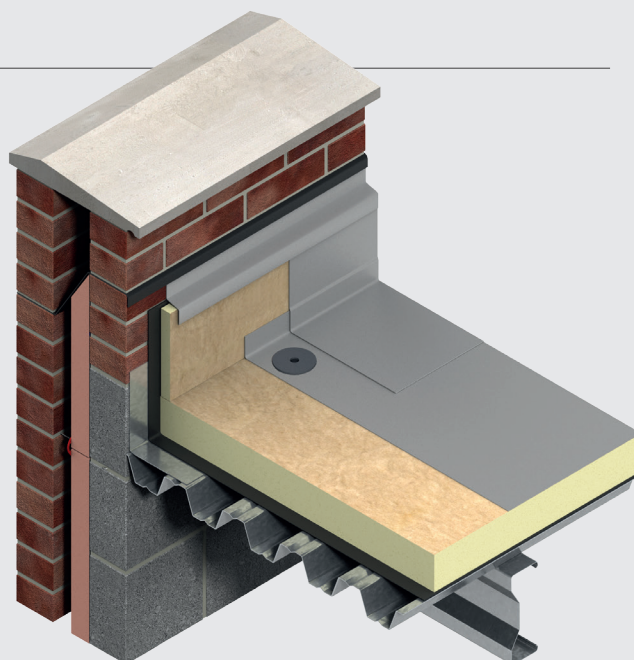


Contents

Introduction	3
Product details Kingspan Thermataper® TT47	4
Product description	4
The facings	4
The core	4
Standards & approvals	4
Standard dimensions	4
Taper gradients	4
Compressive stress	4
Water vapour resistivity	4
Durability	4
Resistance to solvents, fungi & rodents	4
Fire performance	5
FM Approval	5
Thermal properties	5
Product details Kingspan OPTIM-R® packer board	6
Product description	6
The facings	6
The core	6
Standards & approvals	6
Standard dimensions	6
Compressive stress	6
Water vapour resistivity	6
Durability	6
Resistance to solvents, fungi & rodents	6
Fire performance	7
Thermal properties	7
Design considerations	8
Design services	8
Linear thermal bridging	8
Responsible sourcing	9
Sustainability & responsibility	9
Specification clause	9
Typical constructions	10
Product classifications	10
Building Information Modelling (BIM)	10
Wind loadings	10
Roof waterproofing	10
Water vapour control	11
Roof loading / traffic	12
Spanning on metal decks	12
Green roofs	12
Sitework	13
Pre-delivery	13
Delivery	13
Pre-installation	13
Laying pattern	13
Packer board size selection	13
Installing over metal decks	14
Installing over concrete decks	14
Installing over plywood decks	16
Installing over existing flat roofs	17
Mechanical fixings	18
General	18
Mechanical fixing patterns	19
About Kingspan Insulation	20
Products & solutions	20
Company details	24
Services	24
Planet Passionate	25

Introduction

- For FM Approval see page 5
- Insulation and drainage in one
- Fully compatible with single-ply non-bituminous membranes that are fully bonded with solvent based adhesive systems
- Fully compatible with most bitumen based and mastic asphalt waterproofing systems
- Provides a practical alternative to screeding, structural falls or firrings
- Load bearing implications for an existing structure can be minimal
- Resistant to the passage of water vapour
- Easy to handle and install compared to some other commonly used insulants
- Ideal for new build and refurbishment



Visit our free online U-value calculator.
Offering free, quick and easy calculations
for wall, floor and roof constructions.

Useful links

Website

[Kingspan Thermaroof® TT47 GB webpage](#)

[Kingspan Thermaroof® TT47 IE webpage](#)

Certification

[Kingspan Thermaroof® TT47 BBA Certificate of Approval](#)

[Kingspan Thermtaper® TT47 BES 6001 Certificate](#)

Declaration of Performance (DoP)

[Kingspan Thermtaper® TT47 Declaration of Performance \(UK DoP\)](#)

[Kingspan Thermtaper® TT47 Declaration of Performance GB \(CE DoP\)](#)

[Kingspan Thermtaper® TT47 Declaration of Performance IE \(CE DoP\)](#)

Product details - Kingspan Thermataper® TT47

Product description

Kingspan Thermataper® TT47 is the tapered version of Kingspan Thermataper® TR27.

The facings

Kingspan Thermataper® TT47 is faced on both sides with a coated glass tissue, autohesively bonded to the insulation core during manufacture.

The core

The core of Kingspan Thermataper® TT47 is a fibre-free rigid thermoset polyisocyanurate (PIR) insulant.



Standards & approvals

Kingspan Thermataper® TT47 Systems are manufactured under a management system certified to ISO 9001: 2015 (Quality Management System), ISO 14001: 2015 (Environmental Management System), ISO 45001: 2018 (Occupational Health and Safety Management System), ISO 50001: 2018 (Energy Management System) and ISO 37301: 2021 (Compliance Management System).

The current manufactured range (in thicknesses of 25 - 160 mm), produced at Kingspan Insulation's Pembridge (Herefordshire) manufacturing facility, is covered by BBA Certificate 16/5332.



Standard dimensions

Kingspan Thermataper® TT47 is available in the following standard size:

Nominal dimension		Availability
Length	(mm)	1200
Width	(mm)	1200
Insulant thickness	(mm)	
Systems with a 1:30 & 1:40 fall		60 minimum
Systems with a 1:60 & 1:80 fall		30 minimum
All systems		Unlimited maximum*

* Packer boards will be required above a specific thickness.

Taper gradients

Kingspan Thermataper® TT47 is available ex-stock in falls of 1:60 and 1:80. Steeper falls (e.g. 1:30 and 1:40) can be produced by using multiple layers of the standard stock falls. For information regarding tapered roof designs incorporating Kingspan Thermataper® TT47 please contact the Kingspan Insulation Tapered Roofing Department (see rear cover).

Compressive stress

The declared compressive stress of Kingspan Thermataper® TT47 is 150 kPa at 10% compression, when tested to BS EN 826 (Thermal insulating products for building applications. Determination of compression behaviour).

Water vapour resistivity

When tested in accordance with BS EN 12086 (Thermal insulating products for building applications. Determination of water vapour transmission properties), TT47 produced at Kingspan Insulation's Pembridge (Herefordshire) manufacturing facility achieves a resistance of 300 MNs/g for the insulation core and 1 MNs/g for the glass tissue facing. Kingspan Thermataper® TT47 Systems should always be installed over a vapour control layer or sealed metal deck (see 'Water vapour control' on page 9).

Durability

If correctly installed, Kingspan Thermataper® TT47 Systems will remain effective for the life of the building. Its durability depends on the supporting structure and the conditions of its use.

Resistance to solvents, fungi & rodents

The insulation core is resistant to short-term contact with petrol and with most dilute acids, alkalis and mineral oils. However, it is recommended that any spills be cleaned off fully before the boards are installed. Ensure that safe methods of cleaning are used, as recommended by suppliers of the spilt liquid. The insulation core is not resistant to some solvent based adhesive systems, particularly those containing methyl ethyl ketone. Adhesives containing such solvents should not be used in association with this product. Damaged boards or boards that have been in contact with harsh solvents or acids should not be used.

The insulation core and facings used in the manufacture of Kingspan Thermataper® TT47 Systems resist attack by mould and microbial growth and do not provide any food value to vermin.

Product details - Kingspan Thermataper® TT47

Fire performance

For guidance regarding the fire safety requirements of the Building Regulations / Standards, refer to the relevant Technical Bulletins and links to Government websites at www.kingspaninsulation.co.uk/fireregulations.

Under System 4 AVCP, Kingspan Thermataper® TT47 has a Euroclass rating of F.

There can be materials placed above the insulation layer within a roofing system including, but not limited to, waterproofing materials, reinforcement layers, primers and carrier membranes. These additional materials complete the roofing system. As such, the fire performance of a roofing system is predominantly determined by these finishes in combination with the insulation.

Compliance for meeting the fire safety requirements of the Building Regulations / Standards can be evaluated by testing the fire performance of the roofing system. The most commonly used route to compliance involves testing the full roofing system and uses test method CEN / TS 1187: 2012 Test 4 (Test methods for external fire exposure to roofs), see below table. External roof exposure testing is typically carried out by the waterproofing manufacturer / system supplier, due to the complexities of the roofing system outlined above.

NB Test evidence to demonstrate compliance with the fire safety requirements of the Building Regulations / Standards incorporating Kingspan Thermataper® TT47 within a roof system should be provided by the chosen waterproofing system supplier. Without the required classification for the proposed roof system, achieved through either an external roof exposure test or an overlay of inorganic material, the use of Kingspan Thermataper® TT47 must be restricted to at least 20 metres in England and 24 metres in Scotland, or more from any point of the relevant boundary.

Further details on the fire performance of Kingspan Insulation products and systems incorporating the products, may be obtained from the Kingspan Insulation Technical Service Department (see rear cover for details).

FM Approval

Kingspan Thermataper® TT47 is available with FM Approval to FM 4470 (Examination Standard for Single-Ply, Polymer-Modified Bitumen Sheet, Built-Up Roof (BUR) and Liquid Applied Roof Assemblies for use in Class 1 and Non-combustible Roof Deck Construction) April 2022, subject to conditions of approval. Product manufactured at the Pembridge (Herefordshire) and Castleblayney (Co. Monaghan) sites, in individual layers of 40 - 160 mm or multi-layers of up to 280 mm (with any combination respecting the minimum and maximum single layers) are covered by the FM Approval. Please contact Kingspan Insulation's Technical Service Department (see rear cover for details).



Not all thicknesses and roof deck constructions are covered by the FM Approval. Further details of the current FM Approved thicknesses and roof deck constructions can be located on www.fmapprovals.com/roofnav or www.roofnav.com by searching 'Kingspan Therma'. Alternatively please contact Kingspan Insulation's Technical Service Department (see rear cover for details).

Thermal properties

The effective thermal conductivity and thermal resistance of the insulation in a tapered roofing system is specific to the individual roof design. The Kingspan Insulation Tapered Roofing Department (see rear cover for details) performs calculations to determine these values in accordance with Annex E of BS EN ISO 6946: 2017 (Building components and building elements. Thermal resistance and thermal transmittance. Calculation methods) as part of the scheme design process.

Product details - Kingspan OPTIM-R[®] packer board

Product description

Kingspan Thermataper[®] TT47-O combines the tapered insulation of Kingspan Thermataper[®] TT47 with a Kingspan OPTIM-R[®] packer board.

Please refer to page 13 for product details for Kingspan Thermataper[®] TT47 insulation boards.

Composition

Kingspan OPTIM-R[®] comprises a rigid vacuum insulation panel with a microporous core which is evacuated, encased and sealed in a thin, gas-tight envelope.

Standards & approvals

The Kingspan OPTIM-R[®] packer board is manufactured under a management system certified to ISO 9001: 2015 (Quality Management Systems), ISO 14001: 2015 (Environmental Management Systems), ISO 45001: 2018 (Occupational Health and Safety Management Systems), ISO 50001: 2018 (Energy Management System) and ISO 37301: 2021 (Compliance Management System).

The use of Kingspan OPTIM-R[®] is covered by BDA Agrément Certificate BAE 18-035-P-A-UK (in thicknesses 20 -50 mm)) and is covered by ETA Certificate No. ETA-15/0090-v07.



Standard dimensions

The Kingspan OPTIM-R[®] packer board is available in the following standard size(s):

Nominal dimension		Availability
Length	(mm)	300 - 1200
Width	(mm)	300 - 600
Insulant Thickness	(mm)	20 - 50

Compressive stress

The declared compressive stress of the Kingspan OPTIM-R[®] packer board is 150 kPa at 10% compression, when tested to BS EN 826 (Thermal insulating products for building applications. Determination of compression behaviour).

Durability

If correctly installed, the Kingspan OPTIM-R[®] packer board will remain effective for the life of the building. Its durability depends on the supporting structure and the conditions of its use.

Water vapour resistivity

When tested in accordance with BS EN 12086 (Thermal insulating products for building applications. Determination of water vapour transmission properties), the product achieves a resistance greater than 300 MNs/g.

Resistance to solvents, fungi & rodents

The insulation core is resistant to short-term contact with petrol and with most dilute acids, alkalis and mineral oils. However, it is recommended that any spills be cleaned off fully before the boards are installed. Ensure that safe methods of cleaning are used, as recommended by suppliers of the spilt liquid. The insulation core is not resistant to some solvent based adhesive systems, particularly those containing methyl ethyl ketone. Adhesives containing such solvents should not be used in association with this product. Damaged boards or boards that have been in contact with harsh solvents or acids should not be used.

The insulation core and facings used in the manufacture of the Kingspan OPTIM-R[®] packer board resist attack by mould and microbial growth and do not provide any food value to vermin.

Product details - Kingspan OPTIM-R[®] packer board

Fire performance

For guidance regarding the routes to compliance for meeting the Building Regulations / Standards, refer to the relevant Technical Bulletins and links to Government websites at www.kingspaninsulation.co.uk/fireregulations.

Under System 4 AVCP, Kingspan OPTIM-R[®] has a Euroclass rating of F.

Further details on the fire performance of Kingspan Insulation products and systems incorporating the products, may be obtained from the Kingspan Insulation Technical Service Department (see rear cover).

Thermal properties of the Kingspan OPTIM-R[®] element of the Roofing System

The λ -values and R-values detailed below are quoted in accordance with BS EN 12667: 2001 (Thermal performance of building materials and products. Determination of thermal resistance by means of guarded hot plate and heat flow meter methods. Products of high and medium thermal resistance), with allowance for ageing and edge effect of the encapsulating film to form the declared value.

Thermal conductivity

The Kingspan OPTIM-R[®] element of the Roofing System achieves a thermal conductivity (λ -value) of 0.007 W/mK (declared value allowing for edge effect).

Thermal resistance

Thermal resistance (R-value) of the Kingspan OPTIM-R[®] element of the Roofing System varies with thickness and is calculated by dividing the thickness of the panel (expressed in metres) by the thermal conductivity. The resulting number is rounded down to the nearest 0.05 (m²K/W).

Insulant thickness (mm)	Thermal resistance (m ² K/W)
20	2.85
25	3.55
30	4.25
40	5.70
50	7.10

Design considerations

Design services

Efficiency by design

Kingspan Thermataper® TT47 Systems come with a supporting design service. This ensures that the most cost-effective solution for a roof is identified and that the end result is a tapered system design which meets the roof's rainwater run-off and insulation requirements. There are two Kingspan Thermataper TT47 Systems that can be used:

- Kingspan Thermataper® TT47 - comprises high performance rigid thermoset fibre-free polyisocyanurate (PIR) insulation and
- Kingspan Thermataper® TT47-O Systems - combine the tapered insulation of Kingspan Thermataper® TT47 with a Kingspan OPTIM-R® packer board, providing the thinnest solution.

Board layout & falls design

The performance of a tapered insulation system is directly influenced by the accuracy and structural behaviour of the supporting deck. To ensure that the designed drainage strategy performs as intended, structural considerations must be addressed at an early stage.

In accordance with BS 6229 2025, a detailed structural assessment should be undertaken prior to finalizing the board layout and falls design.

The design of the board layout and falls of a successful Kingspan Thermataper® TT47 System must take several factors into account:

- the position of the roof outlets;
- the extent of water run-off required;
- the dimensions of the roof;
- the presence of any existing falls or steps on the roof; and
- the location and dimensions of permanent projections such as roof lights, vents etc., and perimeter restrictions.

Normally, for new roofs, this information can be most simply acquired from an architect's drawing. On existing roofs, a free survey of the roof will be carried out by one of our experienced surveyors to collect the required information.

Kingspan Thermataper® TT47 Systems are flexible enough to be used for any design requiring a fall to perimeter gutters, valley gutters, or to any other outlet or location. Existing structures on the roof such as roof lighting or equipment can easily be accommodated into the design.

The board layout and falls of even the most complex tapered system can be designed quickly and effectively, ready for client approval. The design will illustrate the required direction of drainage and will also take into account U-value requirements, condensation risk and minimum / maximum rise restrictions. Client amendments or revisions can be easily incorporated. This service operates under a quality control system certified to ISO 9001: 2015 (Quality Management Systems. Requirements).

Once the final design has been accepted by the client and the Kingspan Thermataper® TT47 System is ordered, a working drawing will be produced on waterproof paper. This drawing will clearly set out the fall pitch, fall direction and fixing of each board type, and will clearly match the markings on the boards. Installation of Kingspan Thermataper® TT47 Systems is simple using these easy to follow drawings and, to facilitate installation, each board type is packed separately in labelled shrink wrapped packs.

Condensation risk analysis

Included in the design service is the calculation of condensation risk in accordance with BS 5250: 2021 (Management of moisture in buildings). This ensures that any predicted dew point is above the vapour control layer at the point of minimum thickness of the Kingspan Thermataper® TT47 System, whilst also ensuring any condensation risk is within the limits given in BS 5250: 2021 (Management of moisture in buildings).

Calculation of U-values

Kingspan Thermataper® TT47 Systems can easily meet the U-values required for compliance with Building Regulations / Standards.

A detailed U-value calculation together with condensation risk analysis should be completed for each individual project. Please consult the Kingspan Insulation Tapered Roofing Department (see rear cover) for assistance.

U-values for Kingspan Thermataper® TT47 Systems are calculated in accordance with Annex E of BS EN ISO 6946: 2017 (Building components and building elements. Thermal resistance and thermal transmittance. Calculation methods).

Linear thermal bridging

Basic principles

Linear thermal bridging describes the heat loss / gain that occurs at junctions between elements e.g. where an external wall meets the roof, or at junctions around openings in the building fabric where the thermal insulation layer is discontinuous e.g. sills, jambs and lintels.

Interruptions within the insulation layer by materials with poorer insulating properties can result in a thermal bridge, which in turn can lead to problems of condensation and mould growth, especially if there is a drop in surface temperature.

The heat flow at these junctions and opening locations, over and above that through the adjoining plane elements, is the linear thermal transmittance of the thermal bridge: measured in W/mK; referred to as a 'psi-value'; and expressed as a 'ψ-value'.

The lower the ψ-value, the better the performance. ψ-values are taken into account in the calculation methodologies e.g. the Standard Assessment Procedure (SAP) that are used to assess the operational CO₂ emissions and, where applicable, the fabric energy efficiency of buildings, primary energy or delivered energy rates.

ψ-values can comprise either, or a combination of, calculated and assumed values.

Reducing linear thermal bridging

Detailing at junctions to minimise the effects of thermal bridging and the associated risk of condensation or mould growth is important and there are some simple design considerations that can be adopted to help mitigate the risks and to reduce heat losses.

- Care is required to ensure continuation of insulation wherever possible between the wall and roof for best thermal performance. Where this is not possible, the roof and wall insulation should be overlapped and ideally, insulation material introduced between.

Design considerations

- Parapet detailing can represent a good, low heat loss approach, with insulation continuity maintained using an insulated upstand to reduce cold bridging. Where upstands exist Kingspan Thermaroof® TR27 should be used around the perimeter on the internal façade of the parapets to achieve a minimum thermal resistance of 1.10 m²K/W. The upstand should extend a minimum of 150 mm above the roof insulation and achieve a minimum distance of 300 mm between the top of the insulation upstand and the bottom of the horizontal roof insulation. Wall insulation should be carried up into parapets at least as high as the flat roof insulation upstand.
- Lightweight aggregate blockwork to the inner leaf of wall constructions can help to improve thermal performance at junctions generally and where used for the inner leaf of parapet walls it can help to reduce losses.
- Where a parapet construction is not used, to achieve best performance, the roof insulation should be carried over the wall plate to meet and extend past the wall insulation layer. For a timber warm roof construction, the first joist zone above the wall plate can be filled with insulation for best performance and to maintain thermal continuity.
- Rooflight or ventilator kerbs should be insulated with Kingspan Thermaroof® TR27. Where the rooflight is installed on an independent upstand, a minimum of 30 mm insulation should be provided to the upstand.
- Where guttering is incorporated within a flat roof construction, this should be accounted for within the overall thermal design of the roof via an area-weighted calculation for the whole roof; the risk of localised interstitial condensation from reduced insulation provision at the gutter should be considered.

Responsible sourcing

Kingspan Thermataper® TT47 produced at Kingspan Insulation's Pembridge (Herefordshire) and Castleblayney (Co. Monaghan) manufacturing facilities is certified to BES 6001 (Framework Standard for the Responsible Sourcing of Construction Products) 'Good'.



To download the certification please visit our [website](#).

Sustainability & responsibility

Kingspan Insulation has a long-term commitment to sustainability and responsibility: as a manufacturer and supplier of insulation products; as an employer; as a substantial landholder; and as a key member of its neighbouring communities.

A report covering the sustainability and responsibility of Kingspan Insulation Ltd's operations at its Pembridge (Herefordshire) manufacturing facility is available upon request from literature@kingspaninsulation.co.uk

Specification clause

Kingspan Thermataper® TT47 should be described in specifications as:

The roof insulation shall be Kingspan Thermataper® TT47 comprising a rigid thermoset polyisocyanurate insulation core faced on both sides with a coated glass tissue facing. The product shall be manufactured in accordance with the requirements of BS EN 13165: 2012 + A2: 2016; under a management system certified to ISO 9001: 2015, ISO 14001: 2015, ISO 45001: 2018, ISO 50001: 2018 and ISO 37301: 2021; by Kingspan Insulation Limited; and installed in accordance with the instructions issued by them.

Kingspan Thermataper® TT47-O should be described in specifications as:

The roof insulation shall be Kingspan Thermataper® TT47-O comprising a rigid thermoset polyisocyanurate insulation core faced on both sides with a coated glass tissue facing. The packer board shall be rigid vacuum insulation panel Kingspan OPTIM-R®. The product shall be manufactured in accordance with the requirements of BS EN 13165: 2012 + A2: 2016; under a management system certified to ISO 9001: 2015, ISO 14001: 2015, ISO 45001: 2018, ISO 50001: 2018 and ISO 37301: 2021; by Kingspan Insulation Limited; and installed in accordance with the instructions issued by them.

Design considerations

Typical constructions

Timber deck with plasterboard ceiling - Kingspan Thermataper® TT47

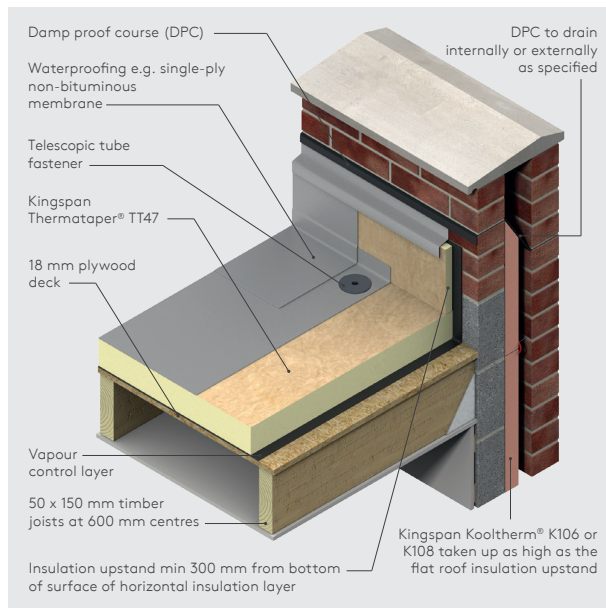


Figure 1

Dense concrete deck with suspended ceiling - Kingspan Thermataper® TT47-O

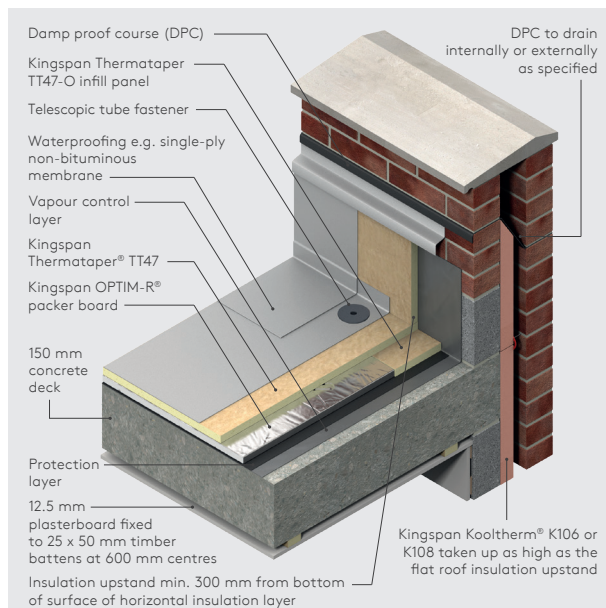


Figure 2

Product classifications

Uniclass UK

Pr_25_71_63_66 Polyisocyanurate (PIR) foam boards

CAWS

J21/420, J31/333, J41/420, J42/420 (Standard and Intermediate)

J31/26, J41/26, J42/27, J21/25 (Minor Works)

Details also available at source.thenbs.com.

Building Information Modelling (BIM)

BIM objects for Kingspan Thermataper® TT47 can be downloaded at source.thenbs.com.

Wind loadings

Wind loadings should be assessed in accordance with BS EN 1991-1-4: 2005 + A1: 2010 (National Annex to Eurocode 1 Actions on Structures. General Actions. Wind Actions) taking into account:

- length / width / height of the building;
- orientation of the building;
- wind speed; aspect (e.g. on a hill side); and
- topographical value of the surrounding area.

Roof waterproofing

Kingspan Thermataper® TT47 Systems are suitable for use with most fully adhered single-ply waterproofing membranes. When using Kingspan Thermataper® TT47 Systems with fully adhered single-ply waterproofing membranes, it is recommended that the joints between boards and cut edges, immediately below the waterproofing membrane, be taped with a min. 50 mm wide foil tape. Please contact the Kingspan Insulation Technical Service Department (see rear cover) to check waterproofing membrane and proprietary adhesive system compatibility. Advice should be sought, from the appropriate waterproofing membrane manufacturer, in relation to the requirement for the use of a fleece backed membrane with the waterproofing membrane in question.

Kingspan Thermataper® TT47 Systems are also suitable for use with some cold liquid applied waterproofing systems. When using Kingspan Thermataper® TT47 Systems with cold liquid applied waterproofing systems, a carrier membrane for the waterproofing must be installed over the insulation boards. Advice should be sought, from the waterproofing system manufacturer, about the specification of the carrier membrane and the compatibility of the waterproofing system with Kingspan Thermataper® TT47 Systems. For further advice please contact the Kingspan Insulation Technical Service Department (see rear cover).

Design considerations

Kingspan Thermataper® TT47 Systems are suitable for use with most bitumen-based waterproofing systems, including high performance membranes to BS EN 13707: 2013 (Flexible sheets for waterproofing. Reinforced bitumen sheets for roof waterproofing. Definitions and characteristics). A self-adhesive underlay providing a partially bonded layer should be applied in accordance with the waterproofing manufacturer's instructions. Care should be taken when applying self-adhesive bituminous primers in high ambient temperatures to avoid excessive tack or rapid solvent flash-off. Subsequent layers of reinforced bitumen membrane should be installed, where applicable, in accordance with BS 8217: 2005 (Reinforced bitumen membranes for roofing. Code of practice)).

Kingspan Thermataper® TT47 Systems are also suitable for use with mastic asphalt waterproofing systems. Mastic asphalt waterproofing should be laid, where applicable, in accordance with BS 8218: 1998 (Code of practice for mastic asphalt roofing). Mastic asphalt should always be laid over an isolating layer of loose-laid Type 4A sheathing felt to BS EN 13707: 2013 (Flexible sheets for waterproofing. Reinforced bitumen sheets for roof waterproofing. Definitions and characteristics). The exposed face of insulation upstands, at parapets and abutments, must be lined with 18 mm exterior grade plywood, prior to the mastic asphalt waterproofing being laid. The plywood is used as an anchor point for the expanded metal substrate onto which the vertical mastic asphalt is laid.

When Kingspan Thermataper® TT47 Systems are to be used to insulate terraces, waterproofed with mastic asphalt with a porous promenade tile overlay, a 20 mm cork roofboard should be bitumen bonded to the Kingspan Thermataper® TT47 prior to laying the Type 4A sheathing felt and mastic asphalt.

NB Kingspan Thermataper® TT47 Systems are also suitable for use with mechanically fixed single-ply waterproofing membranes.

Water vapour control

Kingspan Thermataper® TT47 Systems should be installed over a separate vapour control layer, in new build roofs, unless it is being used in conjunction with a sealed metal deck (Kingspan Thermataper® TT47 only). Regardless of the deck type it is recommended that a condensation risk analysis is carried out for every project.

For refurbishment projects involving the addition of insulation to existing insulated flat roofs, or roofs constructed of insulated steel-faced composite panels, it is imperative that a U-value calculation and condensation risk analysis is carried out for every project to ensure that the correct thickness of insulation is installed to achieve the required thermal performance whilst avoiding interstitial condensation. Compatibility between the existing or proposed roofing membrane and associated materials should always be confirmed with the roofing membrane manufacturer.

In refurbishment projects, where Kingspan Thermataper® TT47 Systems are to be installed over an existing bituminous waterproofing membrane, the membrane can be used as a vapour control layer, as long as it is in a good water-tight condition. Where this is not the case, a separate vapour control layer should be installed.

NB A protection layer should be used under the Kingspan OPTIM-R® packer board. For further information please contact the Kingspan Insulation Technical Service Department (see rear cover).

The type of separate vapour control layer required will be dependent upon the chosen method of fixing the insulation boards.

For mechanically fixed applications (Kingspan Thermataper® TT47 only), a minimum vapour control layer should consist of a 1000 gauge (250 micron) polythene sheet, with all joints lapped and then sealed with double-sided self adhesive tape.

For applications where the insulation boards are to be bonded to the vapour control layer, a minimum vapour control layer should consist of a coated roofing felt complying with Type 3B to BS EN 13707: 2013 (Flexible sheets for waterproofing. Reinforced bitumen sheets for roof waterproofing. Definitions and characteristics), or S1P1 to BS 8747: 2007 (Reinforced bitumen membranes (RBMs) for roofing. Guide to selection and specification), or any appropriate metal-cored vapour control layer.

Where the separate vapour control layer is to be bonded, allowance should be made for adequate bonding of the vapour control layer to the substrate, so as to provide a suitable surface upon which to lay the insulation boards and sufficient resistance to wind up-lift (see 'Wind Loading').

Design considerations

Roof loading / traffic

Kingspan Thermataper® TT47 Systems are suitable for use on access roof decks subject to limited foot traffic.

Where inappropriate foot traffic is liable to occur, it is recommended that, for roofs waterproofed with mastic asphalt, a 20 mm cork roofboard is bonded to the Kingspan Thermaroof® TT47 prior to waterproofing, and the roof surface is protected by promenade tiles.

Where inappropriate foot traffic is liable to occur, it is recommended that, for roofs waterproofed with partially bonded built-up felt, the roof surface is protected by promenade tiles.

Where inappropriate foot traffic is liable to occur, it is recommended that, for roofs waterproofed with fully adhered single-ply or cold liquid applied waterproofing systems, the roof surface is protected by specially constructed walk-ways.

For further advice on the acceptability of specific foot traffic regimes, please contact the Kingspan Insulation Technical Service Department (see rear cover).

Spanning on metal decks (Kingspan Thermataper® TT47 only)

Insulation boards should comply with the minimum thicknesses shown in the table below, when used over metal decks with trough openings.

Trough opening (mm)	Minimum insulant thickness (mm)
≤ 75	25
76 - 100	30
101 - 125	35
126 - 150	40
151 - 175	45
176 - 200	50
201 - 225	55
226 - 250	60

Green roofs

Green roof systems generally comprise of several layers, including: drainage layers, filter membranes, growing media and vegetation (either in the form of mats / blankets, plug-plants or seeded). They are designed to retain water within the growing media or substrate layer for successful plant growth, but are also engineered to drain water freely in order to prevent ponding. If green roofs become completely saturated with water, the plant roots will eventually rot leading to the failure of the vegetation layer. For this reason good drainage on the roof is essential for green roof plants.

The use of tapered insulation with a well designed green roof system allows the roof to drain-freely and reduces the risk of complete water saturation during extreme rainfall events.

Green roof systems are a specialist design area. When designing a loose-laid insulated green roof assembly consideration needs to be given to the following.

Green roof systems are required to have a minimum dry weight of 80 kg/m² to ballast the insulation boards beneath them. However, the total required dry weight will depend upon wind uplift, which in turn will vary with the geographical location of the building, local topography, and the height and width of the roof concerned. The necessity for any additional dry weight should be assessed in accordance with BS EN 1991-1-4: 2005 + A1: 2010 (National Annex to Eurocode 1 Actions on structures. General Actions. Wind Actions).

When installing a loose-laid insulated green roof assembly, any insulation must be immediately over-laid with the green roof system, which must meet all of the requirements outlined above.

Where these requirements cannot be ensured, the insulation should be restrained by mechanical fixing (not suitable for Kingspan Thermataper® TT47-O Systems) or restrained by bonding (see Sitework). For further information please contact the Kingspan Insulation Technical Service Department (see rear cover).

Sitework

Pre-delivery

- Ensure that your drawing is the latest revision and is relevant to the roof being insulated.
- Check that any rainwater outlets, roof lights, obstructions such as tank rooms and dimensions on the drawing correspond to the roof. Should there be any discrepancy contact the Kingspan Insulation Tapered Roofing Department.

Delivery

- It is essential that quantities are checked against the delivery note upon receipt for the roof phase / area required.
- Ensure provisions are made to offload the delivery vehicle.

Pre-installation

- Ensure that vapour control layers (if required) are installed following the manufacturer's guidance.
- Surfaces should be level, clean, dry, and without large projections, steps or gaps before commencing installation.

Laying pattern

- The working drawings supplied by the Kingspan Insulation Tapered Roofing Department will indicate the area of the roof to be covered, the minimum insulation level, fall direction and pitch of the tapered system.
- The location of each board type will be indicated clearly on the drawing and each pack will contain one board type only.
- Ridges, hips and valleys will be marked on the drawings, together with the setting out commencement points for laying of the boards.
- In situations where two or more layers of insulation are required, all layers should be installed in the same manner, as detailed in the following sections. However, refer to 'Mechanical Fixings' for guidance on the number of fixings to be used in each layer.
- In all cases, the layers should be horizontally offset relative to each other so that, as far as possible, the board joints in any two adjacent layers do not coincide with each other (see Figures 3 and 4).

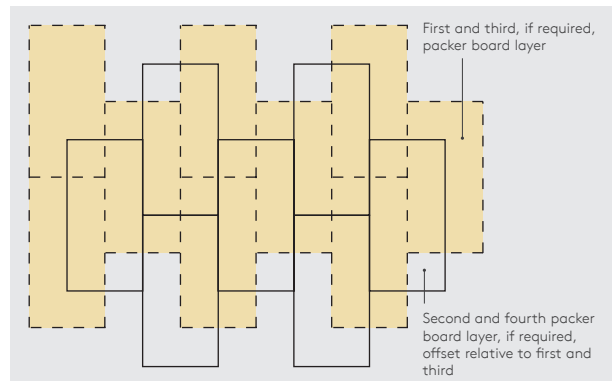


Figure 3: Offsetting of multiple packer board layers

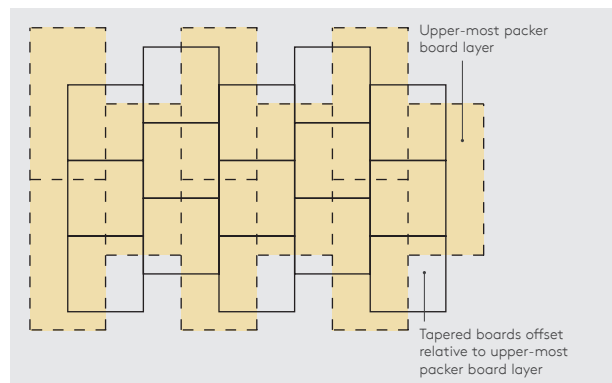


Figure 4: Offsetting of tapered boards relative to packer boards

Packer board size selection

- If consideration is being given to bonding Kingspan Thermataper® TT47 System packer boards, with the use of a suitable (cold) proprietary adhesive system, or in hot bitumen (not suitable for Kingspan Thermataper® TT47-O Systems), it is recommended that 1.2 x 1.2 m boards are used.
- All sizes of board are suitable for mechanical fixing (Kingspan Thermataper TT47 only).

Installing over metal decks (Kingspan Thermataper® TT47 only)

- The following guidance is suitable for Kingspan Thermataper® TT47 only. For further information on using Kingspan Thermataper® TT47-O Systems over metal decks, please contact the Kingspan Technical Service Department (see rear cover).
- Where an FM Approved construction is required, please refer to 'FM Approval' on page 5.
- Metal decks should be clean, dry, without large projections, steps or gaps, and should be graded to allow correct falls to all rainwater outlets.
- If using a sealed metal deck there is no requirement for a separate vapour control layer.
- If the metal deck is not sealed, and the insulation boards are to be bonded down, in order to ensure an adequate bond between the metal deck and the vapour control layer, the metal deck should be suitably primed, in accordance with the primer manufacturer's instructions, prior to the application of bituminous waterproofing, or suitable alternative proprietary adhesive system, used to bond the vapour control layer to the deck.
- If the metal deck is not sealed, and the insulation boards are to be mechanically fixed, the vapour control layer should be loose-laid.
- Where one run of the specified vapour control layer laps another, there should be minimum 150 mm side and end overlaps, which should be adequately sealed.
- Turn the vapour control layer (VCL) up at roof edges to suit the specified waterproofing. In RBM systems, the AVCL should be dressed at least 100 mm above the insulation height, or be continuous and sealed where insulation is installed to the upstand. In bonded single ply systems, the VCL should be installed to the height of the insulation or sealed where insulation continues up the upstand. Final detailing should be confirmed with the roofing manufacturer.
- Boards of Kingspan Thermataper® TT47 should be secured to the deck using mechanical fixings e.g. telescopic tube fasteners (see 'Mechanical Fixings').
- Boards of Kingspan Thermataper® TT47 can be used in a mechanically fixed system that is approved by the waterproofing manufacturer. Alternatively, the insulation boards should be installed as part of a bonded system using a suitable polyurethane adhesive, in accordance with the adhesive manufacturer's instructions and the waterproofing manufacturer's approval. In bonded systems, the insulation should be fixed to the AVCL using a suitable single-part polyurethane adhesive. Apply the adhesive in the correct pattern and centres to achieve the required performance. Always check the required adhesion centres with the roofing manufacturer.
- Insulation boards should always be laid break-bonded, either with their long edges at right angles to the trough openings, or diagonally across the corrugation line, and with joints lightly butted. There should be no gaps at abutments.
- Rooflight or ventilator kerbs should be insulated with Kingspan Thermataper® TR27 Where the rooflight is installed on an independent upstand, a minimum of 30 mm insulation should be provided to the upstand.
- Turn the vapour control layer (VCL) up at roof edges to suit the specified waterproofing. In RBM systems, the AVCL should be dressed at least 100 mm above the insulation height, or be continuous and sealed where insulation is installed to the upstand. In bonded single ply systems, the VCL should be installed to the height of the insulation or sealed where insulation continues up the upstand. Final detailing should be confirmed with the roofing manufacturer.
- Boards of Kingspan Thermaroof® TR27 can be used in a mechanically fixed system that is approved by the waterproofing manufacturer. Alternatively, the insulation boards should be installed as part of a bonded system using a suitable polyurethane adhesive, in accordance with the adhesive manufacturer's instructions and the waterproofing manufacturer's approval. In bonded systems, the insulation should be fixed to the AVCL using a suitable single-part polyurethane adhesive. Apply the adhesive in the correct pattern and centres to achieve the required performance. Always check the required adhesion centres with the roofing manufacturer.
- Insulation boards should always be laid break-bonded, either with their long edges at right angles to the trough openings, or diagonally across the corrugation line, and with joints lightly butted. There should be no gaps at abutments.
- Rooflight or ventilator kerbs should be insulated with Kingspan Thermaroof® TR27 Where the rooflight is installed on an independent upstand, a minimum of 30 mm insulation should be provided to the upstand.
- Where upstands exist Kingspan Thermaroof® TR27 should be used around the perimeter on the internal façade of the parapets to achieve a minimum thermal resistance of 1.10 m²K/W.
- A minimum distance of 300 mm should be maintained between the top of the insulation upstand and the bottom of the horizontal roof insulation.
- The waterproofing membrane is installed in accordance with the membrane manufacturer's instructions, over the whole insulated area including any insulation upstands, as soon as possible after laying the insulation boards.

Installing over concrete decks

For all systems

- Where an FM Approved construction is required, please refer to 'FM Approval' on page 5.
- Concrete decks should be clean, dry, without large projections, steps or gaps, and should be graded to allow correct falls to all rainwater outlets.

Sitework

- In order to ensure an adequate bond between the vapour control layer and the concrete deck, the surface should be suitably primed, in accordance with the primer manufacturer's instructions, prior to the application of the hot bitumen, or suitable alternative proprietary adhesive system, used to bond the vapour control layer to the deck.
- Where one run of the specified vapour control layer laps another, there should be minimum 150 mm side and end overlaps, which should be adequately sealed.
- Turn the vapour control layer (VCL) up at roof edges to suit the specified waterproofing. In RBM systems, the AVCL should be dressed at least 100 mm above the insulation height, or be continuous and sealed where insulation is installed to the upstand. In bonded single ply systems, the VCL should be installed to the height of the insulation or sealed where insulation continues up the upstand. Final detailing should be confirmed with the roofing manufacturer.

Kingspan Thermataper® TT47 Systems only

- Boards of Kingspan Thermaroof® TT47 can be used in a mechanically fixed system that is approved by the waterproofing manufacturer. Alternatively, the insulation boards should be installed as part of a bonded system using a suitable polyurethane adhesive, in accordance with the adhesive manufacturer's instructions and the waterproofing manufacturer's approval. In bonded systems, the insulation should be fixed to the AVCL using a suitable single-part polyurethane adhesive. Apply the adhesive in the correct pattern and centres to achieve the required performance. Always check the required adhesion centres with the roofing manufacturer.
- Alternatively, boards of Kingspan Thermataper® TT47 should be secured to the deck using mechanical fixings e.g. telescopic tube fasteners (see 'Mechanical Fixings').
- Insulation boards should always be laid break-bonded, either with their long edges at right angles to the edge of, or diagonally across the roof, and with joints lightly butted. There should be no gaps at abutments.
- Rooflight or ventilator kerbs should be insulated with Kingspan Thermaroof® TR27 Where the rooflight is installed on an independent upstand, a minimum of 30 mm insulation should be provided to the upstand.
- Where upstands exist Kingspan Thermaroof® TR27 should be used around the perimeter on the internal façade of the parapets to achieve a minimum thermal resistance of 1.10 m²K/W.
- A minimum distance of 300 mm should be maintained between the top of the insulation upstand and the bottom of the horizontal roof insulation.
- The waterproofing membrane is installed in accordance with the membrane manufacturer's instructions, over the whole insulated area including any insulation upstands, as soon as possible after laying the insulation boards.

Kingspan Thermataper TT47-O Systems

- A protection layer should be used under the Kingspan OPTIM-R® packer board. For further information please contact the Kingspan Insulation Technical Service Department (see rear cover).
- Where runs of the Kingspan OPTIM-R® panels do not accurately fit the dimension of the roof, the use of Kingspan OPTIM-R® flex infill boards are required to make up this difference. Each Kingspan OPTIM-R® flex infill board is to be the same thickness as the Kingspan OPTIM-R® panels.
- Both the Kingspan OPTIM-R® and the Kingspan OPTIM-R® infill panels should be bonded down using an appropriate proprietary adhesive system.
- Insulation boards should always be laid as per the design from Kingspan Insulation, with joints lightly butted. There should be no gaps at abutments.
- Rooflight or ventilator kerbs should be insulated with Kingspan Thermaroof® TR27. Where the rooflight is installed on an independent upstand, a minimum of 30 mm insulation should be provided to the upstand.
- Kingspan Thermataper® TT47 boards should be laid as soon as possible to avoid exposure of the Kingspan OPTIM-R® panels to direct foot traffic.
- Kingspan Thermataper® TT47 boards should be bonded to the upper surface of the Kingspan OPTIM-R® panels using an appropriate proprietary adhesive system prior to the application of the waterproof covering.
- Where upstands exist Kingspan Thermaroof® TR27 should be used around the perimeter on the internal façade of the parapets to achieve a minimum thermal resistance of 1.10 m²K/W.
- A minimum distance of 300 mm should be maintained between the top of the insulation upstand and the bottom of the horizontal roof insulation.
- The waterproofing membrane is installed in accordance with the membrane manufacturer's instructions, over the whole insulated area including any insulation upstands, as soon as possible after laying the insulation boards.

Installing over plywood decks

For all systems

- Plywood decks should be clean, dry, without large projections, steps or gaps, and should be graded to allow correct falls to all rainwater outlets.
- If the insulation boards are to be bonded down, in order to ensure an adequate bond between the plywood deck and the vapour control layer, the plywood surface should be suitably primed, in accordance with the primer manufacturer's instructions, prior to the application of the hot bitumen, or suitable alternative proprietary adhesive system, used to bond the vapour control layer to the deck.
- Alternatively, the vapour control layer can be nailed to the deck, in which case the nail heads will become sealed with the subsequent bonding of the insulation boards to the vapour control layer.
- If the insulation boards are to be mechanically fixed (not suitable for Kingspan Thermataper® TT47-O, the vapour control layer should be loose-laid.
- Where one run of the specified vapour control layer laps another, there should be minimum 150 mm side and end overlaps, which should be adequately sealed.
- Turn the vapour control layer (VCL) up at roof edges to suit the specified waterproofing. In RBM systems, the AVCL should be dressed at least 100 mm above the insulation height, or be continuous and sealed where insulation is installed to the upstand. In bonded single ply systems, the VCL should be installed to the height of the insulation or sealed where insulation continues up the upstand. Final detailing should be confirmed with the roofing manufacturer.

Kingspan Thermataper® TT47 Systems only

- Boards of Kingspan Thermataper® TT47 should be bonded down by laying into hot bitumen (max. temperature 240°C) mopped or poured over the vapour control layer, or with the use of a suitable alternative proprietary adhesive system.
- Boards of Kingspan Thermaroof® TT47 can be used in a mechanically fixed system that is approved by the waterproofing manufacturer. Alternatively, the insulation boards should be installed as part of a bonded system using a suitable polyurethane adhesive, in accordance with the adhesive manufacturer's instructions and the waterproofing manufacturer's approval. In bonded systems, the insulation should be fixed to the AVCL using a suitable single-part polyurethane adhesive. Apply the adhesive in the correct pattern and centres to achieve the required performance. Always check the required adhesion centres with the roofing manufacturer.
- Insulation boards should always be laid break-bonded, either with their long edges at right angles to the edge of, or diagonally across the roof, and with joints lightly butted. There should be no gaps at abutments.
- Joints between insulation boards should not coincide with those between the plywood sheets.

- Rooflight or ventilator kerbs should be insulated with Kingspan Thermaroof® TR27. Where the rooflight is installed on an independent upstand, a minimum of 30 mm insulation should be provided to the upstand.
- Where upstands exist Kingspan Thermaroof® TR27 should be used around the perimeter on the internal façade of the parapets to achieve a minimum thermal resistance of 1.10 m²K/W.
- For roofs without parapets, a timber edging batten of the same height of the insulation is to be used to fix the fascia board to the gutter system. Please contact the membrane manufacturer for more details.
- The waterproofing membrane is installed in accordance with the membrane manufacturer's instructions, over the whole insulated area including any insulation upstands, as soon as possible after laying the insulation boards.

Kingspan Thermataper® TT47-O Systems

- A protection layer should be used under the Kingspan OPTIM-R® packer board. For further information please contact the Kingspan Insulation Technical Service Department (see rear cover).
- Where runs of the Kingspan OPTIM-R® panels do not accurately fit the dimension of the roof, the use of Kingspan OPTIM-R® flex infill boards are required to make up this difference. Each Kingspan OPTIM-R® flex infill board is to be the same thickness as the Kingspan OPTIM-R® panels.
- Both the Kingspan OPTIM-R® and the Kingspan OPTIM-R® infill panels should be bonded down using an appropriate proprietary adhesive system.
- Insulation boards should always be laid as per the design from Kingspan Insulation, with joints lightly butted. There should be no gaps at abutments.
- Joints between insulation boards should not coincide with those between the plywood sheets.
- Roof-light or ventilator kerbs etc. should always be insulated with the same thickness of Kingspan Thermataper® TT47 as the general roof area.
- Rooflight or ventilator kerbs should be insulated with Kingspan Thermaroof® TR27 Where the rooflight is installed on an independent upstand, a minimum of 30 mm insulation should be provided to the upstand.
- Kingspan Thermataper® TT47 boards should be bonded to the upper surface of the Kingspan OPTIM-R® panels using an appropriate proprietary adhesive system prior to the application of the waterproof covering.
- Where upstands exist Kingspan Thermaroof® TR27 should be used around the perimeter on the internal façade of the parapets to achieve a minimum thermal resistance of 1.10 m²K/W.

Sitework

- Batten needs to be 10mm lower than the insulation height.
- The waterproofing membrane is installed in accordance with the membrane manufacturer's instructions, over the whole insulated area including any insulation upstands, as soon as possible after laying the insulation boards.

Installing over existing flat roofs

Kingspan Thermataper TT47-O Systems

- For refurbishment projects involving the addition of insulation to existing insulated flat roofs, or roofs constructed of insulated steel-faced composite panels, it is imperative that a U-value calculation and condensation risk analysis is carried out for every project to ensure that the correct thickness of insulation is installed to achieve the required thermal performance whilst avoiding interstitial condensation. Compatibility between the existing or proposed roofing membrane and associated materials should always be confirmed with the roofing membrane manufacturer.

Kingspan Thermataper TT47 Systems

- The existing waterproofing membrane surface should be clean, dry, without large projections, steps or gaps, and should be graded to allow correct falls to all rainwater outlets.
- Where the existing waterproofing membrane is not fit for purpose as a vapour control layer, a separate vapour control layer should be bonded to it with hot bitumen, or suitable alternative proprietary adhesive system. If the insulation boards are to be mechanically fixed, the vapour control layer should be loose-laid.
- Where one run of the specified vapour control layer laps another, there should be minimum 150 mm side and end overlaps, which should be adequately sealed.
- Turn the vapour control layer (VCL) up at roof edges to suit the specified waterproofing. In RBM systems, the AVCL should be dressed at least 100 mm above the insulation height, or be continuous and sealed where insulation is installed to the upstand. In bonded single ply systems, the VCL should be installed to the height of the insulation or sealed where insulation continues up the upstand. Final detailing should be confirmed with the roofing manufacturer.
- Boards of Kingspan Thermaroof® TR27 can be used in a mechanically fixed system that is approved by the waterproofing manufacturer. Alternatively, the insulation boards should be installed as part of a bonded system using a suitable polyurethane adhesive, in accordance with the adhesive manufacturer's instructions and the waterproofing manufacturer's approval. In bonded systems, the insulation should be fixed to the AVCL using a suitable single-part polyurethane adhesive. Apply the adhesive in the correct pattern and centres to achieve the required performance. Always check the required adhesion

centres with the roofing manufacturer.

- Alternatively, the insulation boards should be secured to the deck using mechanical fixings e.g. telescopic tube fasteners (see 'Mechanical Fixings').
- Insulation boards should, wherever possible, be laid break-bonded, with joints lightly butted. There should be no gaps at abutments.
- Rooflight or ventilator kerbs should be insulated with Kingspan Thermaroof® TR27. Where the rooflight is installed on an independent upstand, a minimum of 30 mm insulation should be provided to the upstand.
- Where upstands exist Kingspan Thermaroof® TR27 should be used around the perimeter on the internal façade of the parapets to achieve a minimum thermal resistance of 1.10 m²K/W.
- A minimum distance of 300 mm should be maintained between the top of the insulation upstand and the bottom of the horizontal roof insulation.
- The waterproofing membrane is installed in accordance with the membrane manufacturer's instructions, over the whole insulated area including any insulation upstands, as soon as possible after laying the insulation boards.

Sitework

Mechanical fixings (Kingspan Thermataper® TT47 only)

- The number of mechanical fixings required to fix Kingspan Thermataper® TT47 will vary with the geographical location of the building, the local topography, and the height and width of the roof concerned along with the deck type.
- A minimum of 5 fixings are required to secure boards of Kingspan Thermataper® TT47 to the deck.
- The requirement for additional fixings should be assessed in accordance with BS EN 1991-1.4: 2005 + A1: 2010 (National Annex to Eurocode 1. Actions on structures, General Actions, Wind Actions).
- Mechanical fixings must be arranged in an even pattern.
- Fasteners at insulation board edges must be located > 50 and < 150 mm from edges and corners of the board and not overlap board joints.
- Please refer to page 11 for recommended fixing patterns.
- Each fixing should incorporate a square or circular plate washer (min. 50 x 50 mm or 50 mm diameter).
- If two layers of insulation are to be installed, the base layer should be mechanically fixed with minimum 1 No. fixing in the centre of the insulation board before fixing the top layer as described above.
- Where alternative mechanical fixing systems are specified, such as bar fixing systems, the specified system must give similar restraint to the insulation board as would be attained by the use of conventional telescopic tube fasteners.

General

Kingspan Thermataper® TT47-O Systems only

- Kingspan OPTIM-R® panels should not be walked on. A protective foot or crawl board should be used during the installation process.
- The Kingspan OPTIM-R® infill panels and the Kingspan Thermataper® TT47 overlap may be walked on.
- The Kingspan OPTIM-R® panels should not be used in association with solvent-based adhesive systems.
- The Kingspan OPTIM-R® panels should not be exposed to naked flames or excessive heat.

For all systems

Following trades

- The roof must be adequately protected when building works are being carried out on or over the roof surface. This is best achieved by close boarding. The completed roof must not be used for the direct storage of heavy building components such as bricks or air conditioning equipment.

Reflective coatings

- Bitumen based built up waterproofing systems laid over Kingspan Thermataper® TT47 Systems should always incorporate a solar reflective layer such as chippings or a specialist coating.

Daily working practice

- At the completion of each day's work, or whenever work is interrupted for extended periods of time, a night joint must be made in order to prevent water penetration into the roof construction.

Cutting

- For Kingspan Thermataper® TT47-O Systems, the Kingspan OPTIM-R® panels should not be cut or penetrated. The substrate must be clean, dry and level, and free from sharp objects or edges.
- Cutting of insulation boards should be carried out either by using a fine toothed saw or by scoring with a sharp knife, snapping the board over a straight edge and then cutting the facing on the other side.
- Ensure accurate trimming to achieve close-butting joints and continuity of insulation.

Packaging and storage

- The polyethylene packaging of Kingspan Insulation products, which is recyclable, should not be considered adequate for outdoor protection.
- Ideally, boards should be stored inside a building. If, however, outside storage cannot be avoided, then the boards should be stacked clear of the ground and covered with an opaque polythene sheet or weatherproof tarpaulin. Boards that have been allowed to get wet should not be used.

Health and safety

- Kingspan Insulation products are chemically inert.
- A Safety Information Data Sheet for this product is available from the Kingspan Insulation website www.kingspaninsulation.co.uk/safety or www.kingspaninsulation.ie/safety.

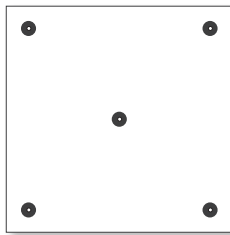
Warning - do not stand on or otherwise support your weight on this product unless it is fully supported by a load bearing surface.

Mechanical fixing patterns for Kingspan Thermataper TT47 boards only

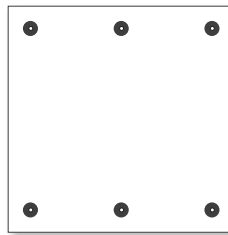
Recommended fixing patterns

The recommended fixing patterns for Kingspan Thermataper® TT47 are shown below. The number of fixings necessary should be assessed in accordance with BS EN 1991-1-4: 2005 + A1: 2010 (National Annex to Eurocode 1. Actions on structures. General Actions. Wind Actions).

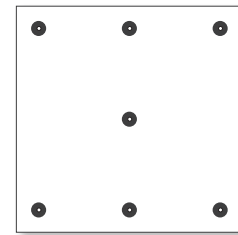
The images below show recommended fixing patterns, the number of fixings used and the resulting fixing density (number of fixings per m²).



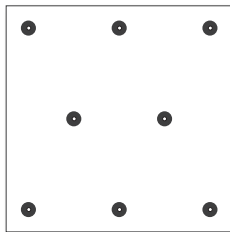
5 No. per board
(1.2 x 1.2 m board - 3.47 fixings / m²)



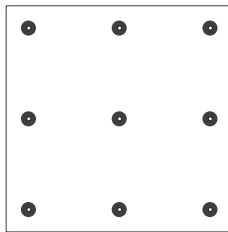
6 No. per board
(1.2 x 1.2 m board - 4.16 fixings / m²)



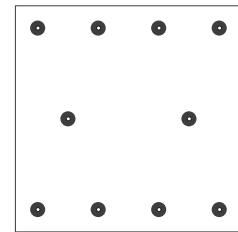
7 No. per board
(1.2 x 1.2 m board - 4.86 fixings / m²)



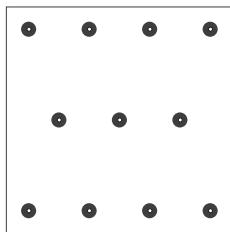
8 No. per board
(1.2 x 1.2 m board - 5.55 fixings / m²)



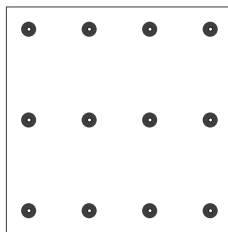
9 No. per board
(1.2 x 1.2 m board - 6.25 fixings / m²)



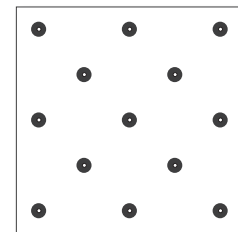
10 No. per board
(1.2 x 1.2 m board - 6.94 fixings / m²)



11 No. per board
(1.2 x 1.2 m board - 7.63 fixings / m²)



12 No. per board
(1.2 x 1.2 m board - 8.33 fixings / m²)



13 No. per board
(1.2 x 1.2 m board - 9.02 fixings / m²)

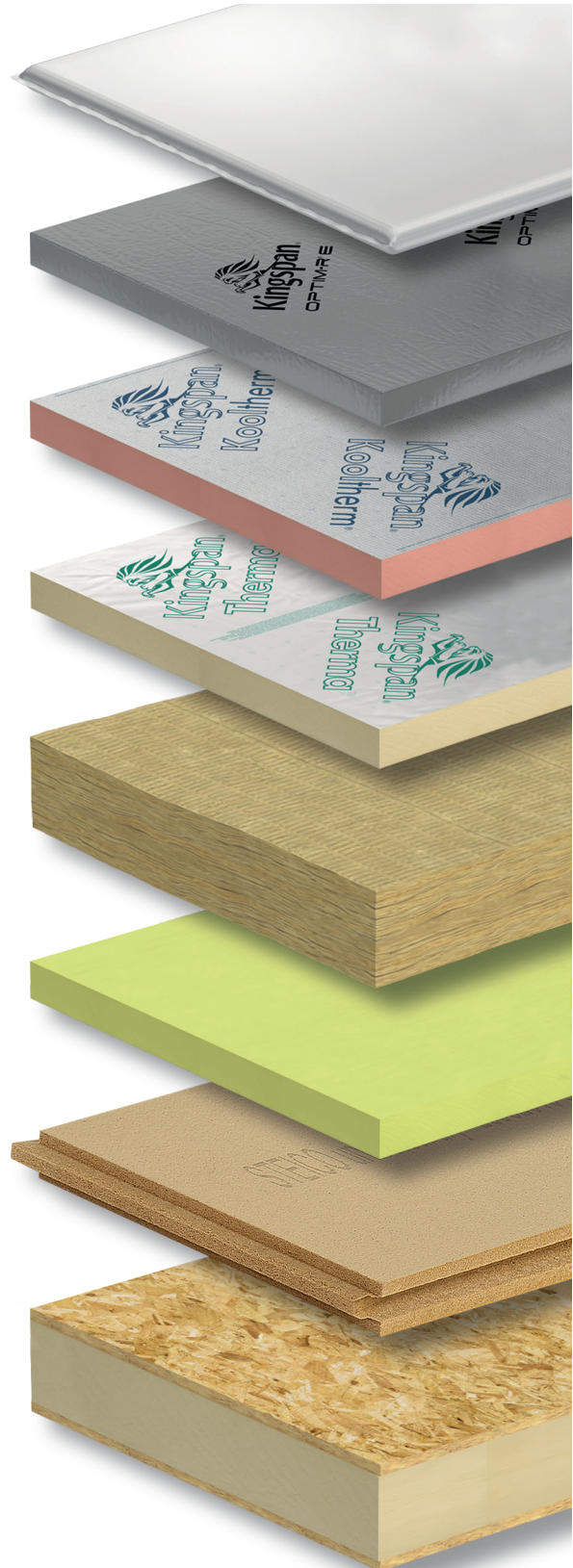
NB Mechanical fixings e.g. telescopic tube fasteners, must be arranged in an even pattern. Fasteners at board edges must be located > 50 mm and < 150 mm from edges and corners of the board and not overlap board joints.

About Kingspan Insulation

Products & solutions

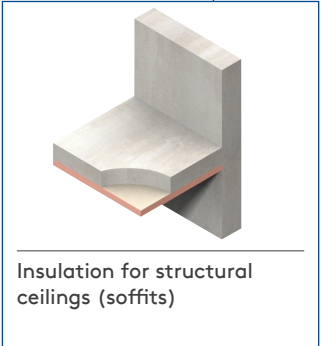
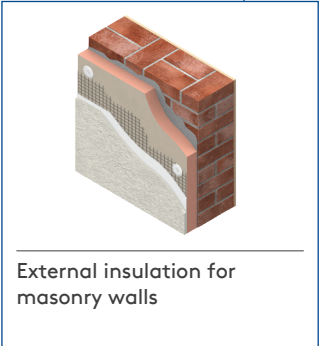
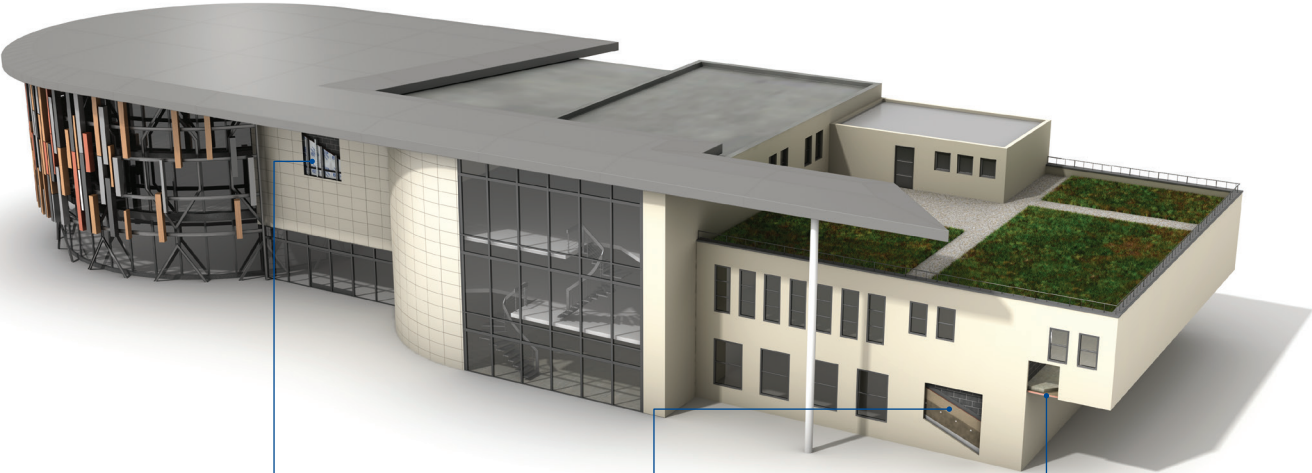
Rigid insulation products for building fabric applications, including roofs, walls and floors.

- Kingspan AlphaCore® – microporous silica-based insulation.
- Kingspan OPTIM-R® – vacuum insulation panel (VIP) systems.
- Kingspan Kooltherm® – phenolic insulation.
- Kingspan Therma™ – PIR insulation.
- K-Roc® – rock mineral fibre insulation.
- Kingspan GreenGuard® – extruded polystyrene insulation (XPS).
- STEICO – wood fibre insulation.
- Kingspan TEK® – structural insulated panels (SIPs).
- Cavity closers – PVC-U extrusions with an insulation core.
- Membranes – for pitched roofs and walls.



About Kingspan Insulation

Solutions available for roofs, walls and floors of commercial buildings, from schools to retail.

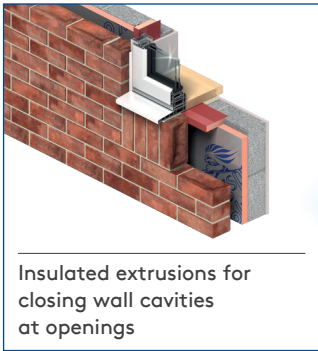


About Kingspan Insulation

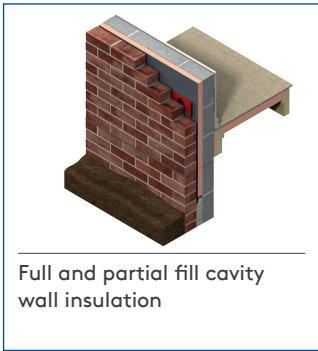
From new housing developments to refurbishing your home, we offer a number of different solutions for roof, wall and floor applications.



Insulation for tiled or slated pitched warm roof spaces

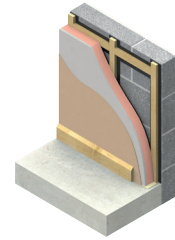


Insulated extrusions for closing wall cavities at openings

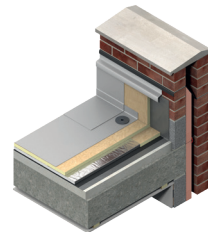


Full and partial fill cavity wall insulation

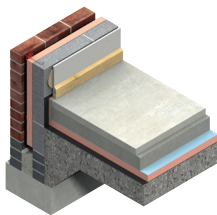




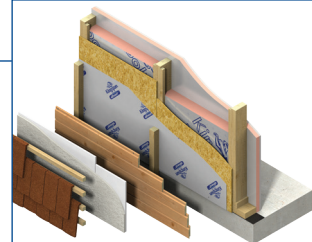
Insulation for tiled or slated pitched warm roof spaces



Insulation for flat roofs and terraces



Insulation for floors



Insulation for timber and steel framing systems

About Kingspan Insulation

Company details

Kingspan Insulation Ltd is part of the Kingspan Group plc., one of Europe's leading construction product manufacturers. The Kingspan Group was formed in the late 1960s and is a publicly quoted group of companies headquartered in Kingscourt, County Cavan, Ireland.



Kingspan Insulation Ltd is a market leading manufacturer of rigid insulation products and insulated systems for building fabric and building services applications.

Our head office is located in Pembridge, in the heart of rural Herefordshire. Our northern hub is near Selby in North Yorkshire. We also have a hub in Castleblayney, Ireland. All three sites are accredited to the independent compliance standard ISO 37301: 2021.



Services

Our support services provide fast and accurate advice no matter what your role is. Visit our website to access the following services.

- U-value calculations – free, quick and easy U-value calculations with our U-value Calculator.
- Help and advice on your projects, including stockists, how to guides, regulatory guidance and e-learning.
- Dedicated Specification and Sales teams to support projects.



- Building Information Modelling (BIM) – download BIM objects for our products.
- Tapered roofing service – Kingspan Insulation's tapered roofing systems come with a supporting design service to ensure the most cost-effective solution for a roof is identified.



- CPDs – Kingspan Insulation offer a number of free CPD seminars for architects and specifiers covering a wide range of industry topics. CPDs can be booked or a range of online learning courses can be found online.
- Product awareness training – (GB only) build your team's knowledge with on-site training and support with one of our experienced product technicians who cover the full range of Kingspan products and applications, from flooring to roofing and everything in-between with both internal and external wall insulations.



PLANET PASSIONATE

Planet Passionate is our group wide global sustainability programme.

Our Planet Passionate programme aims to have a positive impact on three big global challenges: climate change, circularity and protection of our natural world.



Scan for our latest progress report to learn more about our targets, partnerships and global commitments.

Contact details

Great Britain

Kingspan Insulation Ltd
Pembroke | Leominster
Herefordshire | HR6 9LA

T: +44 (0) 1544 388 601
E: info@kingspaninsulation.co.uk
www.kingspaninsulation.co.uk

For individual department contact details please visit
www.kingspaninsulation.co.uk/contact



Visit our free online U-value calculator.
Offering free, quick and easy calculations
for wall, floor and roof constructions.

Ireland

Kingspan Insulation Ltd
Castleblayney | County Monaghan

T: +353 (0) 42 979 5000
E: info@kingspaninsulation.ie
www.kingspaninsulation.ie

For individual department contact details please visit
www.kingspaninsulation.ie/contact



Visit our free online U-value calculator.
Offering free, quick and easy calculations
for wall, floor and roof constructions.



For the most up-to-date
version of this brochure
please scan or click [here](#).

To access pre-existing product information or information relating to previously sold/discontinued products please email literature@kingspaninsulation.co.uk

The information contained in this brochure is believed to be correct at the date of publication. Kingspan Insulation Limited ("Kingspan Insulation") reserves the right to alter or amend the product specifications without notice due to continuous improvement commitments. There may also be relevant changes between publications with regard to legislation, or other developments affecting the accuracy of the information contained in this brochure. Product thicknesses shown in this document should not be taken as being available ex-stock and advice should be sought from Kingspan Insulation's Customer Service Department. The information, technical details and fixing instructions etc. included in this literature are given in good faith and apply to uses described. Kingspan Insulation does not accept responsibility for issues arising from using products in applications different from those described within this brochure or failure to correctly follow the information or instructions as described within this brochure. Recommendations for use should be verified with a suitable expert or professional for suitability and compliance with actual requirements, specifications and any applicable laws and regulations. For other applications or conditions of use, Kingspan Insulation offers a technical advisory service (see above for contact details), the advice of which should be sought for uses of Kingspan Insulation products that are not specifically described herein. Please check that your copy of this literature is current by contacting the Kingspan Insulation Marketing Department.

© Kingspan, Thermaroof, AlphaCore, Kingspan GreenGuard, Kooltherm, K-Roc, OPTIM-R, TEK and the Lion Device are Registered Trademarks of the Kingspan Group plc in the UK, Ireland and other countries. All rights reserved.

TM Therma is a Trademark of the Kingspan Group plc.

Kingspan Insulation Ltd is not associated with, and its products have not necessarily been tested by, the GREENGUARD Environmental Institute.

Registered in England & Wales, No. 01882722. Registered Office: Pembroke, Leominster, Herefordshire HR6 9LA UK. VAT GB428602456.

Registered in Ireland, No. 54621. Registered Office: Bree Industrial Estate, Castleblayney, Co. Monaghan, Ireland. VAT IE45750691.

